

Figure S1. Immunohistochemical images of cervical cancer: Positive staining for multi-cytokeratin (AE1/AE3), cyclin-dependent kinase inhibitor 2A (P16), Synaptophysin (Syn), Ki-67 antigen (Ki-67). Partial positive staining for Cytokeratin 5/6 (CK5/6), Tumor protein p63 (P63), Tumor protein p40 (P40), Neural cell adhesion molecule 1 (CD56). Weakly positive staining for Synaptophysin (Syn). Negative staining for Chromogranin A (CgA). Magnification: x100.

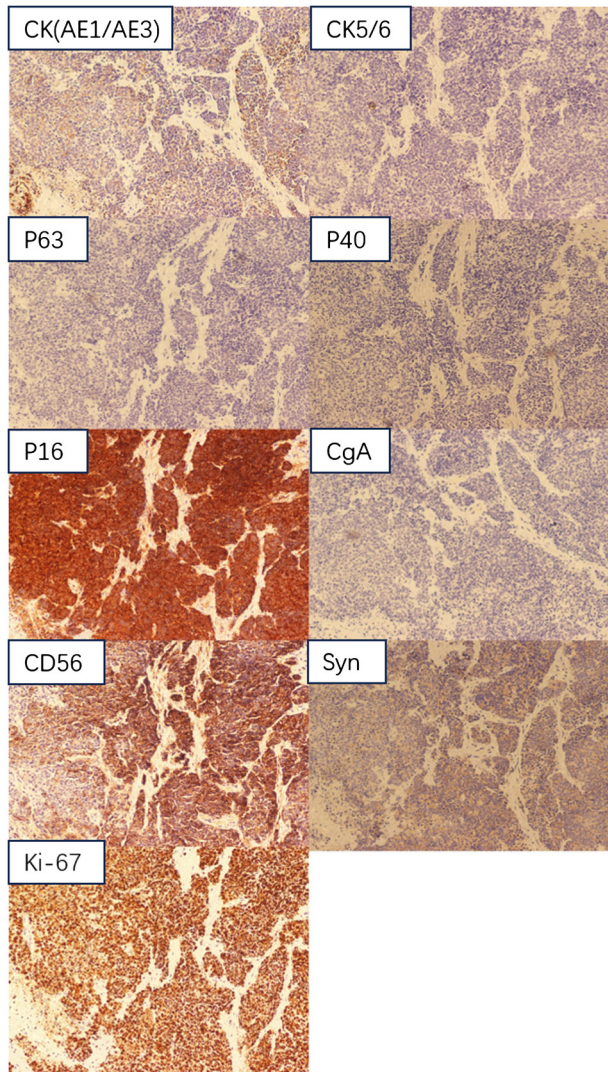


Figure S2. Immunohistochemical image of left breast cancer: Positive staining for P16, CK (AE1/AE3). Partial positive staining for Progesterone receptor (PR), CD56. Negative staining for P40, Syn. Magnification: x100.

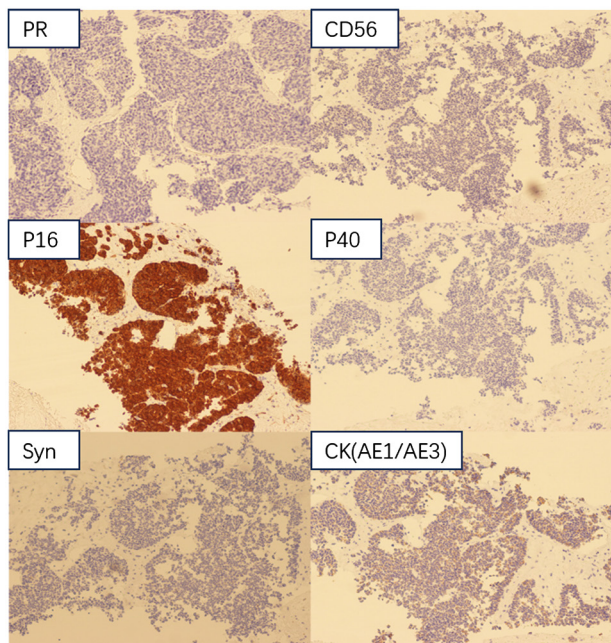


Figure S3. Immunohistochemical image of right breast cancer tissue. Positive staining for Cytokeratin 8/18 (CK8/18), brahma-related gene 1 (BRG-1), RING finger-like protein In1 (INI-1). Partial positive staining for Insulinoma-associated protein 1 (INSM1), estrogen receptor (ER), GATA binding protein 3 (GATA3). Negative staining for CgA, homeodomain protein NK2 homeobox 2 (Nkx2.2), Cytokeratin 7 (CK7), nuclear protein of the testis (nut), PR. Magnification, x100.

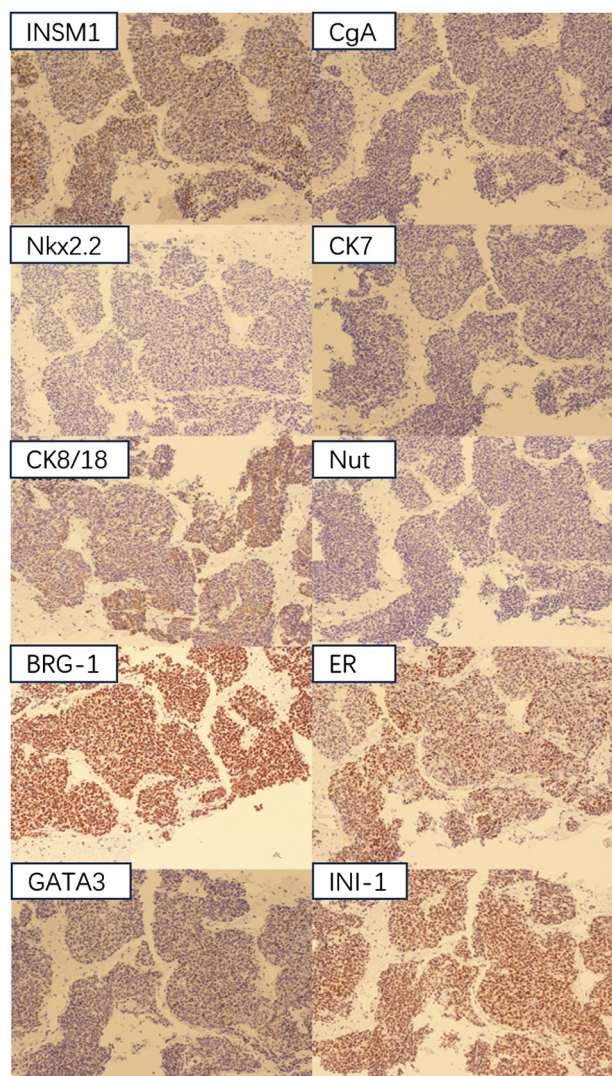


Figure S4. Immunohistochemical image of right ovarian cancer: Positive staining for Ki-67. Negative staining for transcription termination factor 1 (TTF-1), P53. Magnification, x100.

