

Figure S1. Western blots showing the knockdown efficiency and migration ability of three FH knockdown lentiviral clones. (A) Left, western blot showing the knockdown efficiency of three shRNAs in RL95-2 cells; right, cell proliferation abilities of RL95-2 cells after knockdown of FH. (B) Left, migration ability of RL95-2 cells after FH knockdown using three different clones; right, quantification of the results. All experiments were performed in triplicate. One-way analysis of variance with post-hoc Tukey's test was used for multiple group comparisons. Data are presented as the mean \pm SD. * $P < 0.05$, *** $P < 0.001$. FH, fumarate hydratase; sh, short hairpin; shLuc, firefly luciferase-specific shRNA.

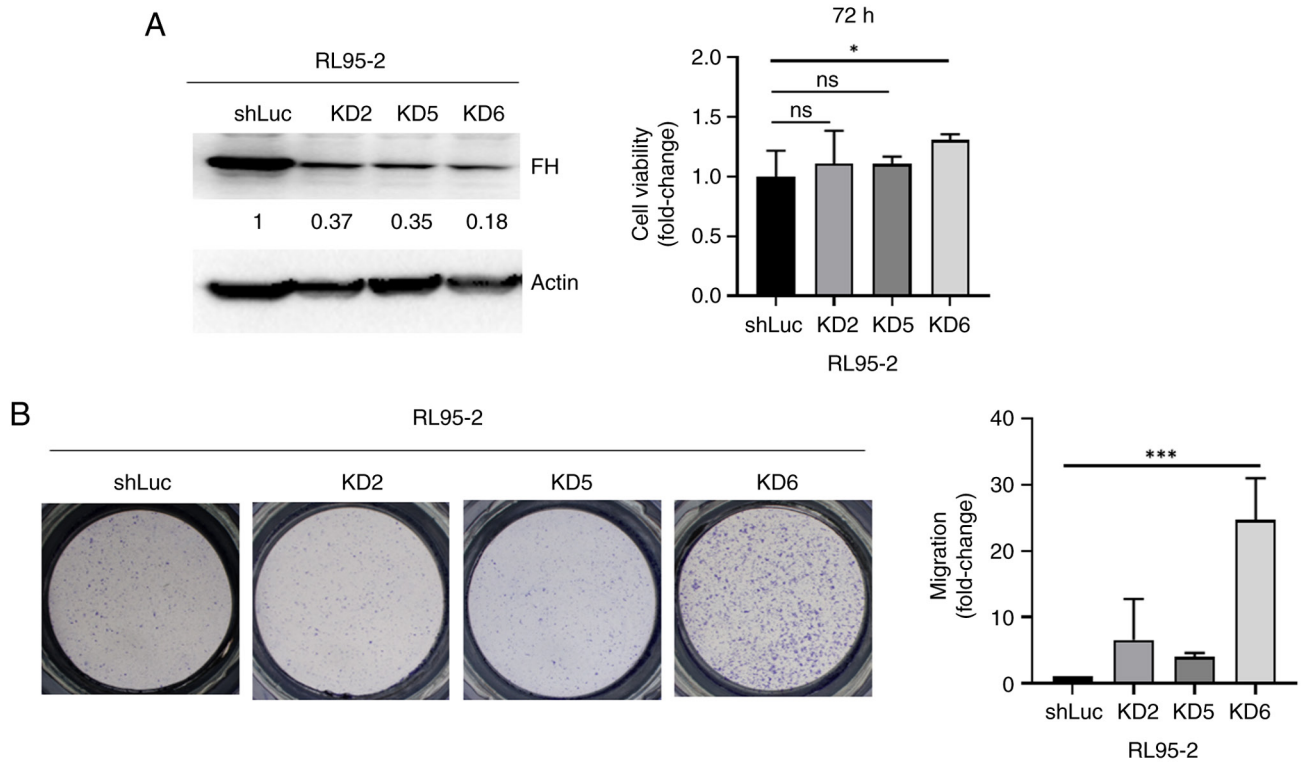


Figure S2. Fold change of the levels of various kinases. (A) Bar chart showing the protein levels of various kinases in FH-knockdown RL95-2 cells compared with the shLuc control group. (B) Western blot showing JNK1/2/3 and p-JNK1/2/3 protein expression. (C) Western blot showing inhibition of EGFR phosphorylation by gefitinib. FH, fumarate hydratase; sh, short hairpin; p-, phosphorylated; shLuc, firefly luciferase-specific shRNA.

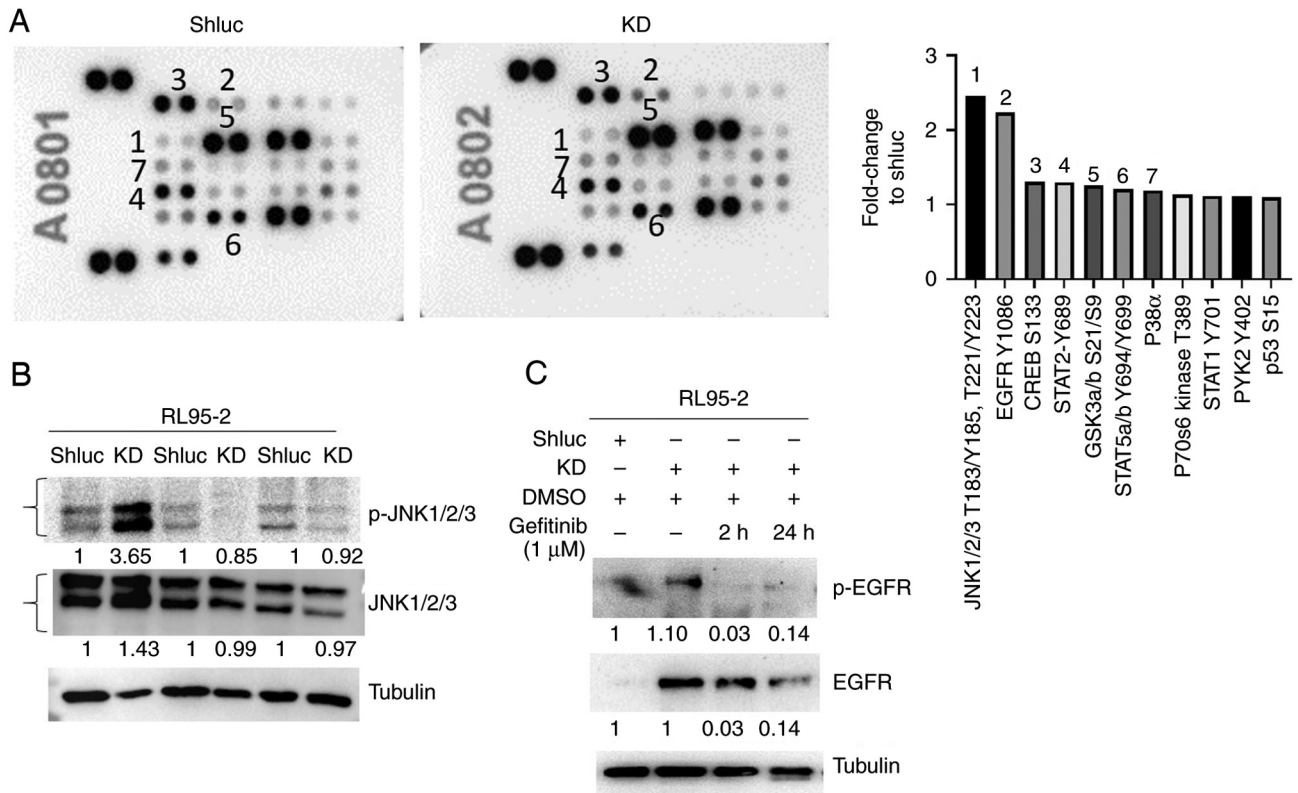


Figure S3. Protein-protein association networks using the STRING database.

