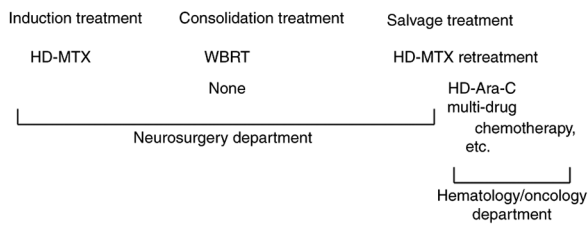


Figure S1. Treatment schemes and departments at which each treatment was performed. HD-MTX, high-dose methotrexate; WBRT, whole-brain radiotherapy; HD-Ara-C, high-dose cytarabine; R-MTX, rituximab and HD-MTX; R-MPV, rituximab, HD-MTX, procarbazine, and vincristine; ASCT, autologous stem cell transplantation.

January 2011 - March 2018



April 2018 - December 2021

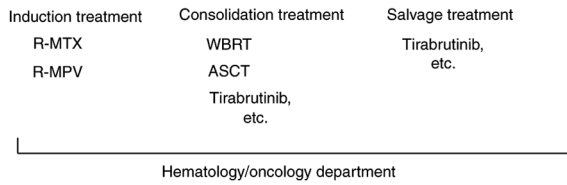


Figure S2. Treatment after relapse or progression. PCNSL, primary central nervous system lymphoma; HD-MTX, high-dose methotrexate; HD-Ara-C, high-dose cytarabine; R-THP-COP, rituximab, cyclophosphamide, pirarubicin, vincristine, and prednisolone; RT, radiotherapy; R-CHOP, rituximab, cyclophosphamide, adriamycin, vincristine, and prednisolone, BSC, best supportive care.

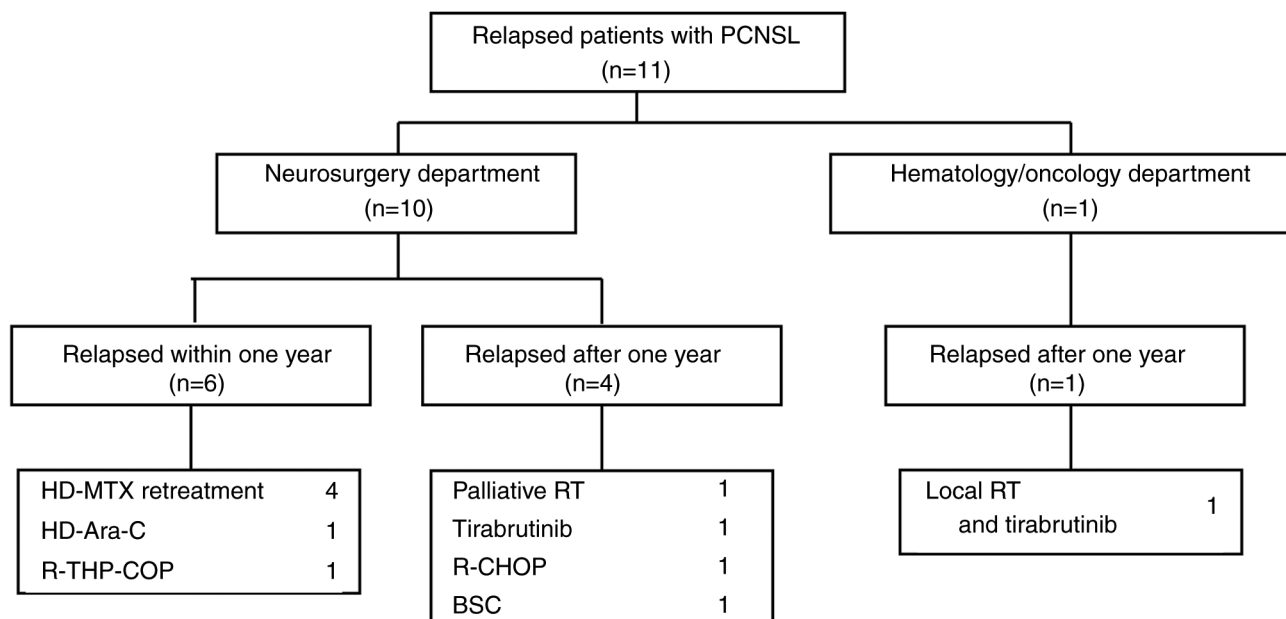
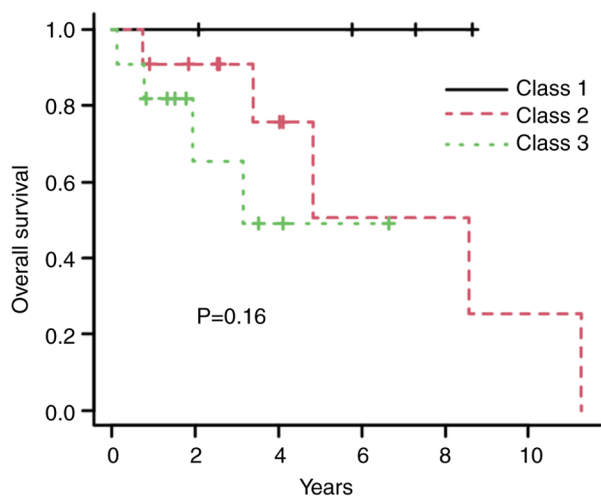


Figure S3. Overall survival according to the Memorial Sloan-Kettering Cancer Center prognostic model.



	Number at risk					
	0	2	4	6	8	10
Class 1	4	4	3	2	1	0
Class 2	11	8	5	2	2	1
Class 3	11	4	2	1	0	0