

Figure S1. Kaplan-Meier curves of the OS of patients in each subgroup in groups A and B. The OS of the two cohorts was compared in the (A) G0 subgroup ($P=0.947$), (B) G1 subgroup ($P=0.294$), and (C) G2 subgroup ($P=0.671$). The differences among each cohort were not significant ($P>0.05$). OS, overall survival.

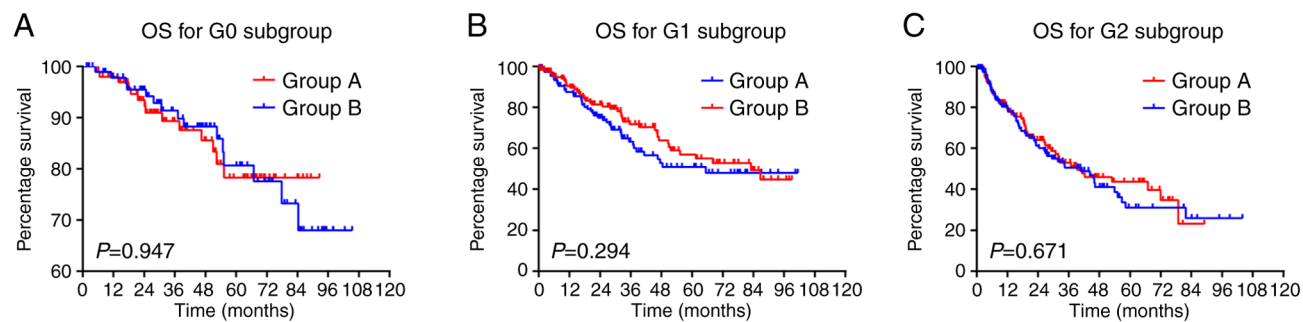


Figure S2. Kaplan-Meier curves of the RFS of patients in each subgroup in groups A and B. The RFS of the two cohorts was compared in the (A) G0 subgroup ($P=0.927$), and the (B) G1 subgroup ($P=0.171$). The differences among each cohort were not significant ($P>0.05$). RFS, relapse-free survival.

