

Figure S1. Biphasic pattern of MMR protein expression. (A) Immunohistochemical findings. Immunostaining results show two distinct regions of MMR protein expression. The red dotted line indicates the boundary line (magnification, x200). (B) Waveform of the MSI test kit. MSI test was performed with a crude sample not separated according to MMR protein expression. HE, hematoxylin-eosin staining; MSI, microsatellite instability; MMR, mismatch repair.

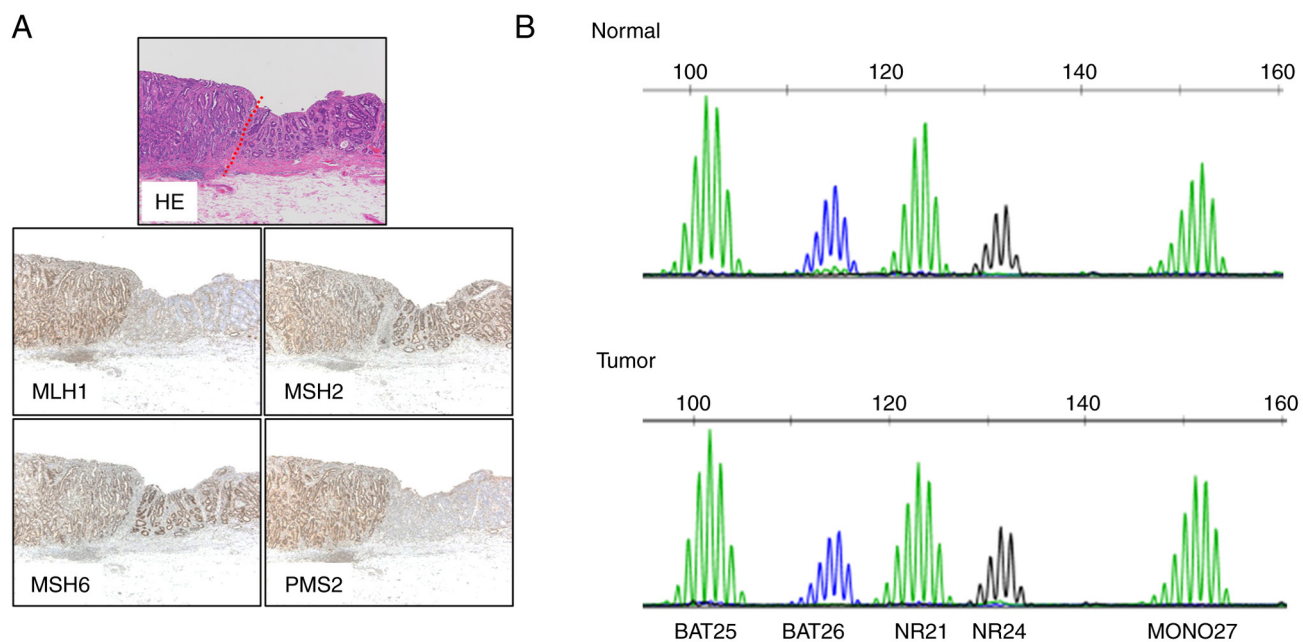


Figure S2. Waveform of microsatellite stable case. No instability was observed in any of the regions. HE, hematoxylin-eosin staining.

