

Figure S1. Tumor cells were positive for cytokeratin 5.2 (magnification, x200; scale bar, 100 μm).

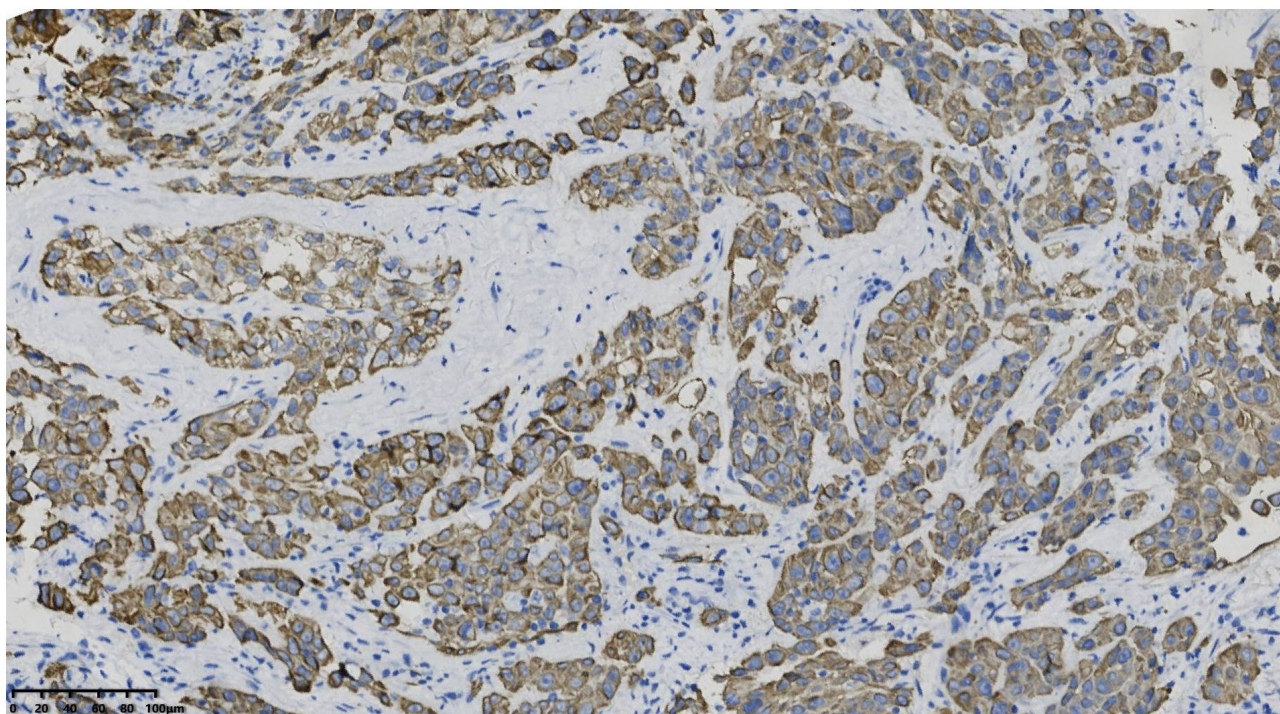


Figure S2. Tumor cells were positive for CK5/6 (magnification, x200; scale bar, 100 μ m).

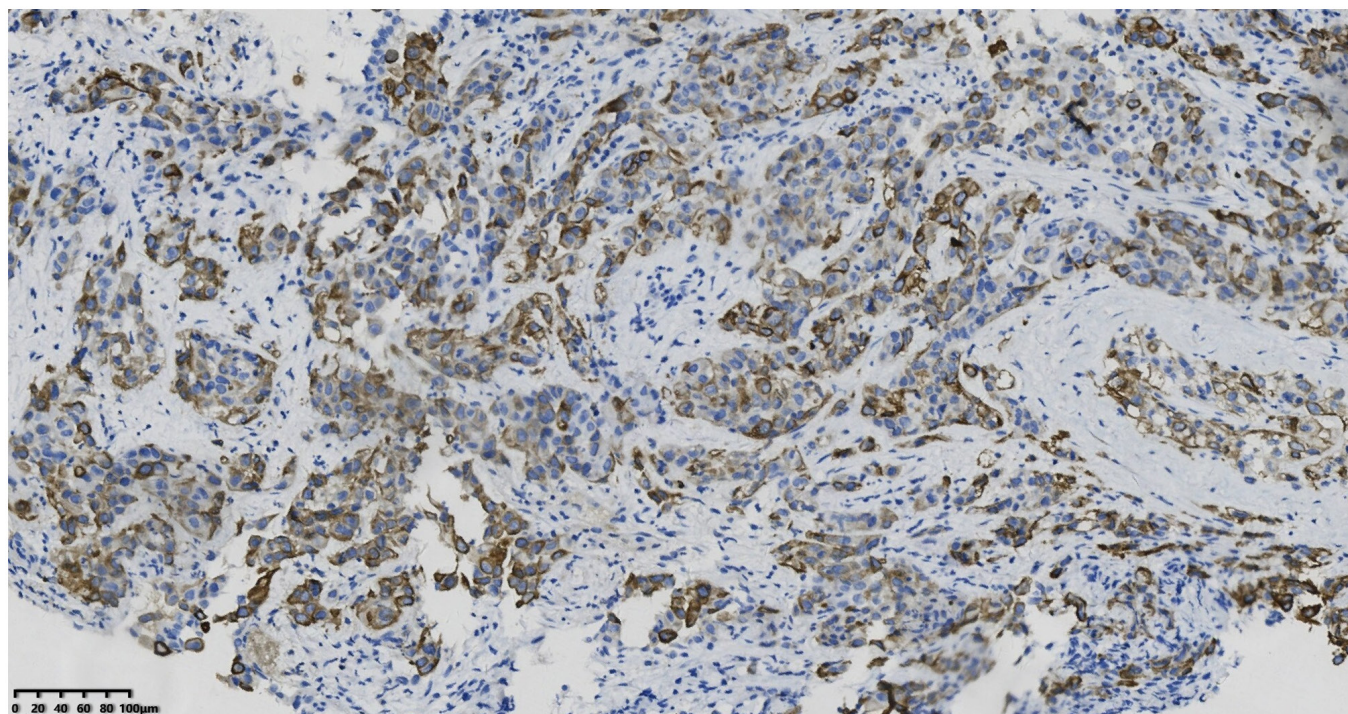


Figure S3. Tumor cells were positive for calretinin (magnification, x200; scale bar, 100 μm).

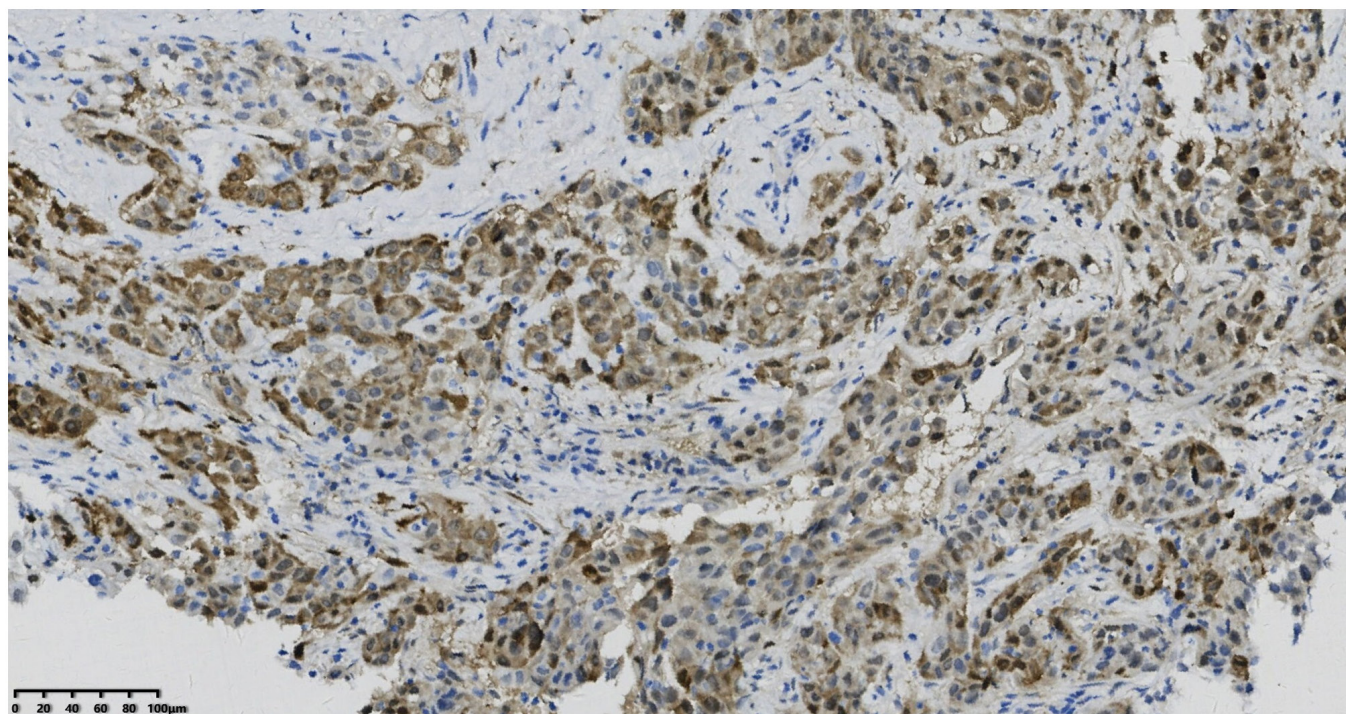


Figure S4. Tumor cells were negative for thyroid transcription factor-1(magnification, x200; scale bar, 100 μ m).

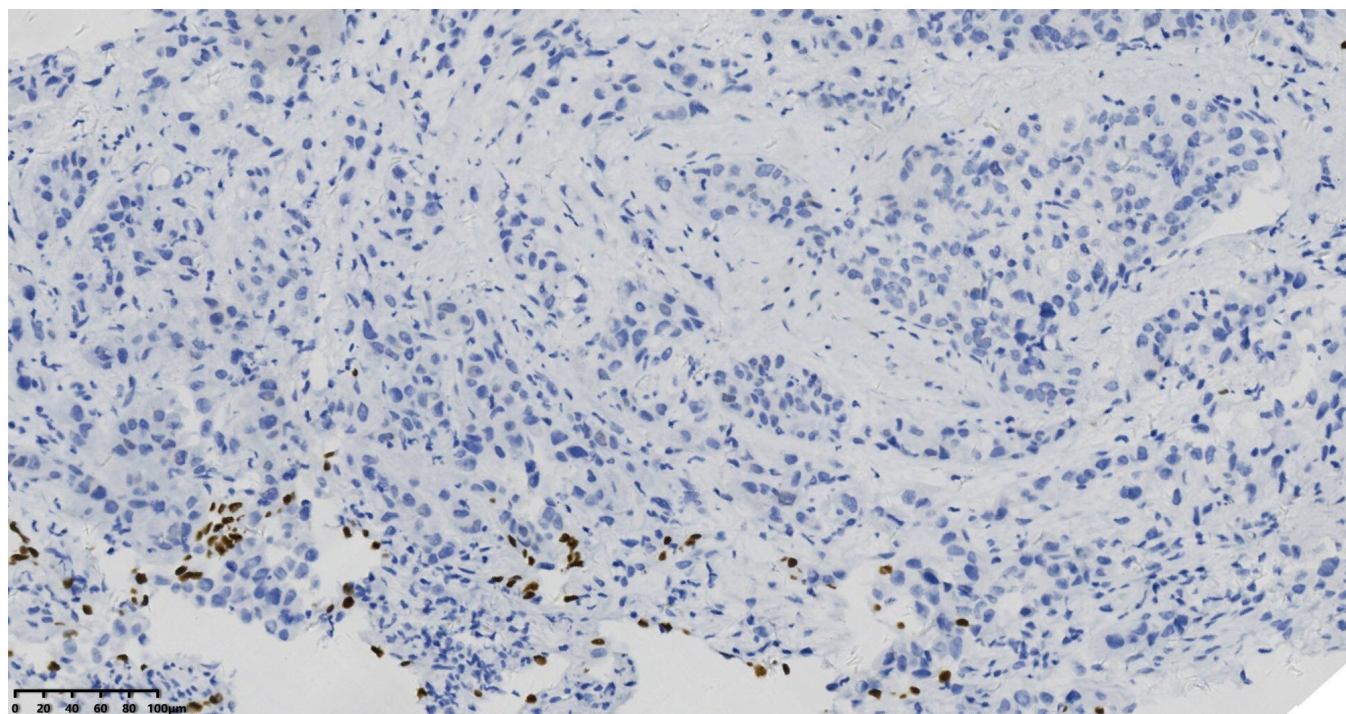


Figure S5. Tumor cells were negative for NapsinA (magnification, x200; scale bar, 100 μm).

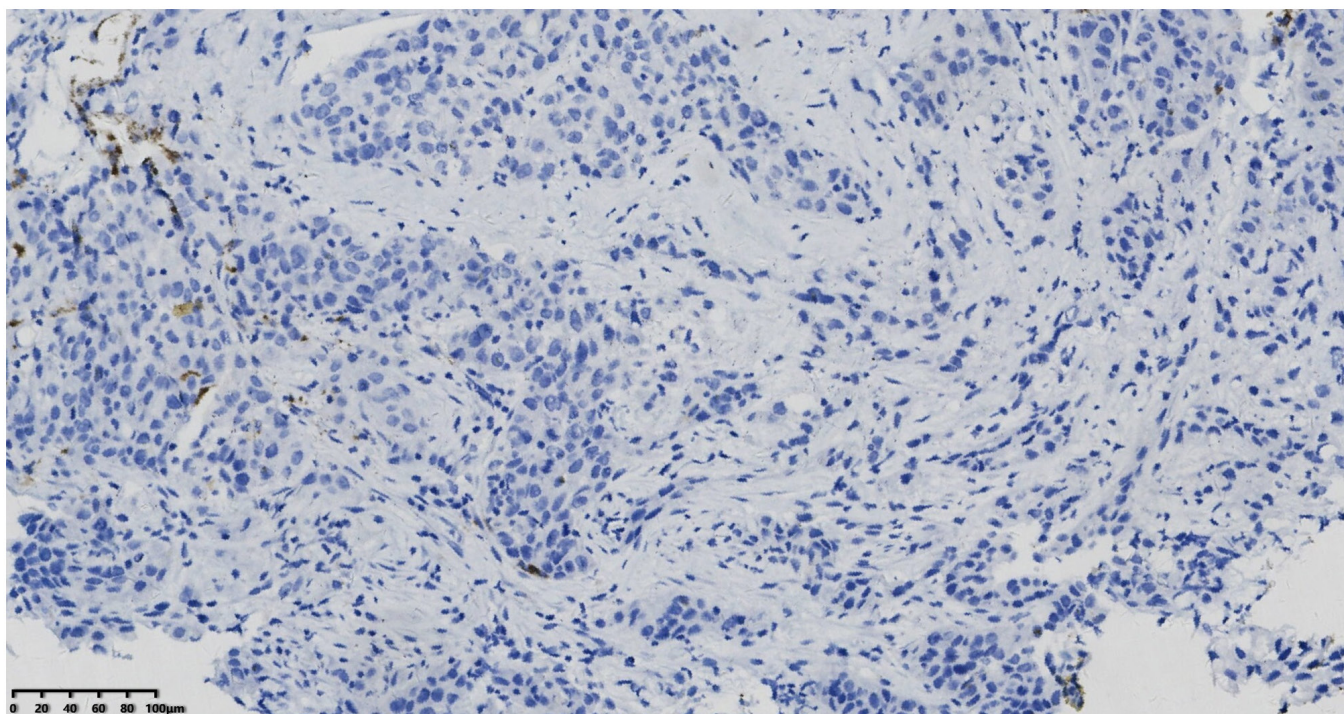


Figure S6. Tumor cells were negative for p40 (magnification, x200; scale bar, 100 μ m).

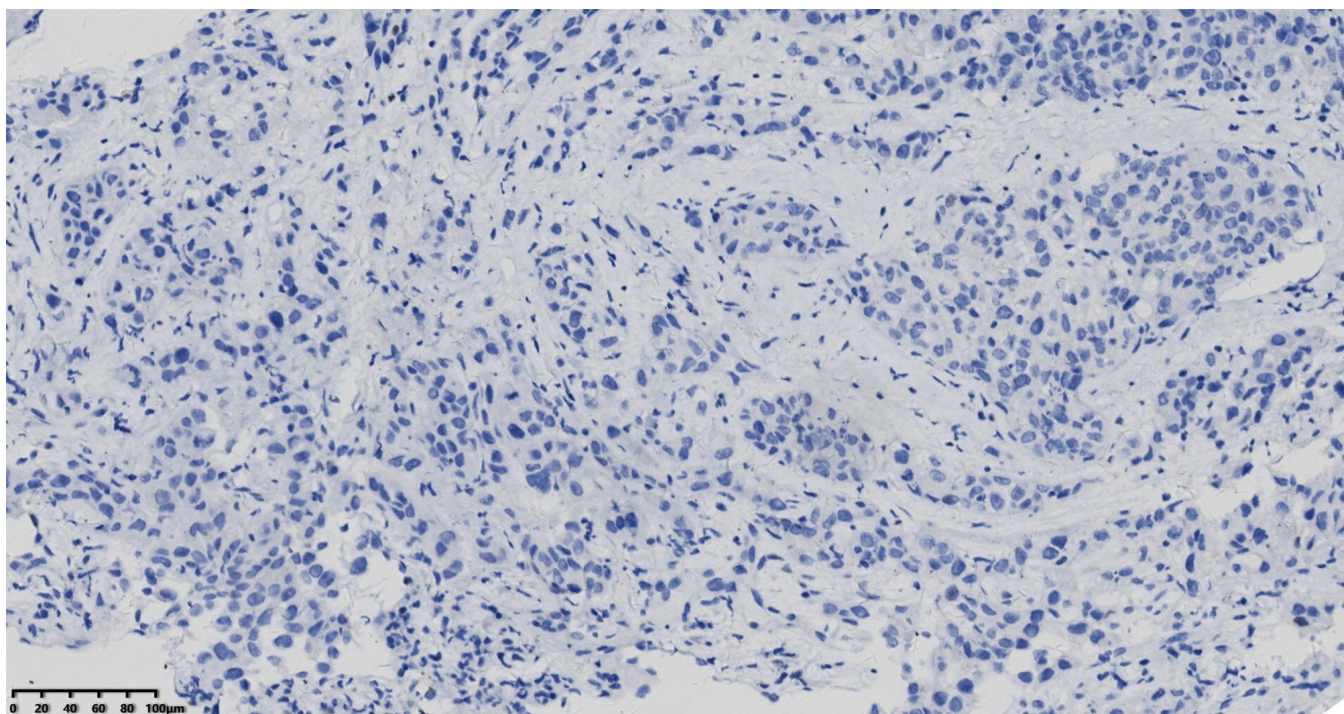


Figure S7. Tumor cells were negative for synaptophysin (magnification, x200; scale bar, 100 μ m).

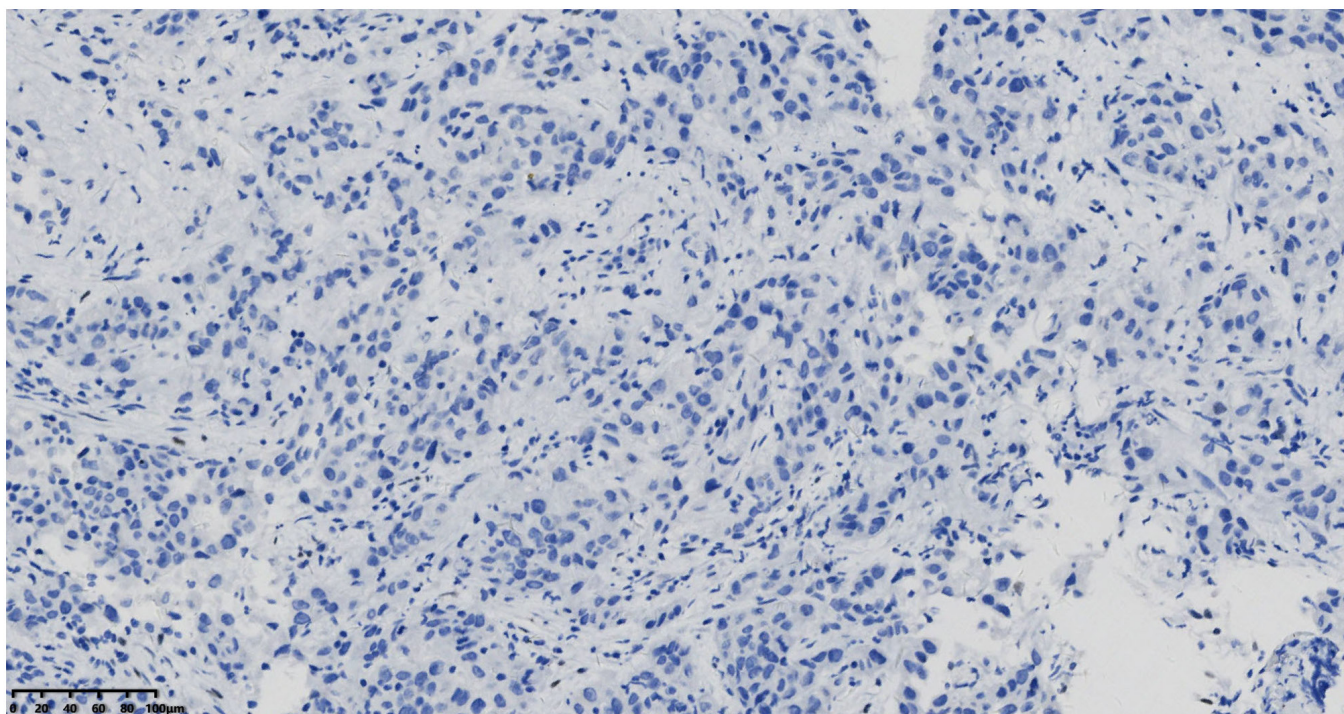


Figure S8. Tumor cells were negative for chromogranin A (magnification, x200; scale bar, 100 μ m).

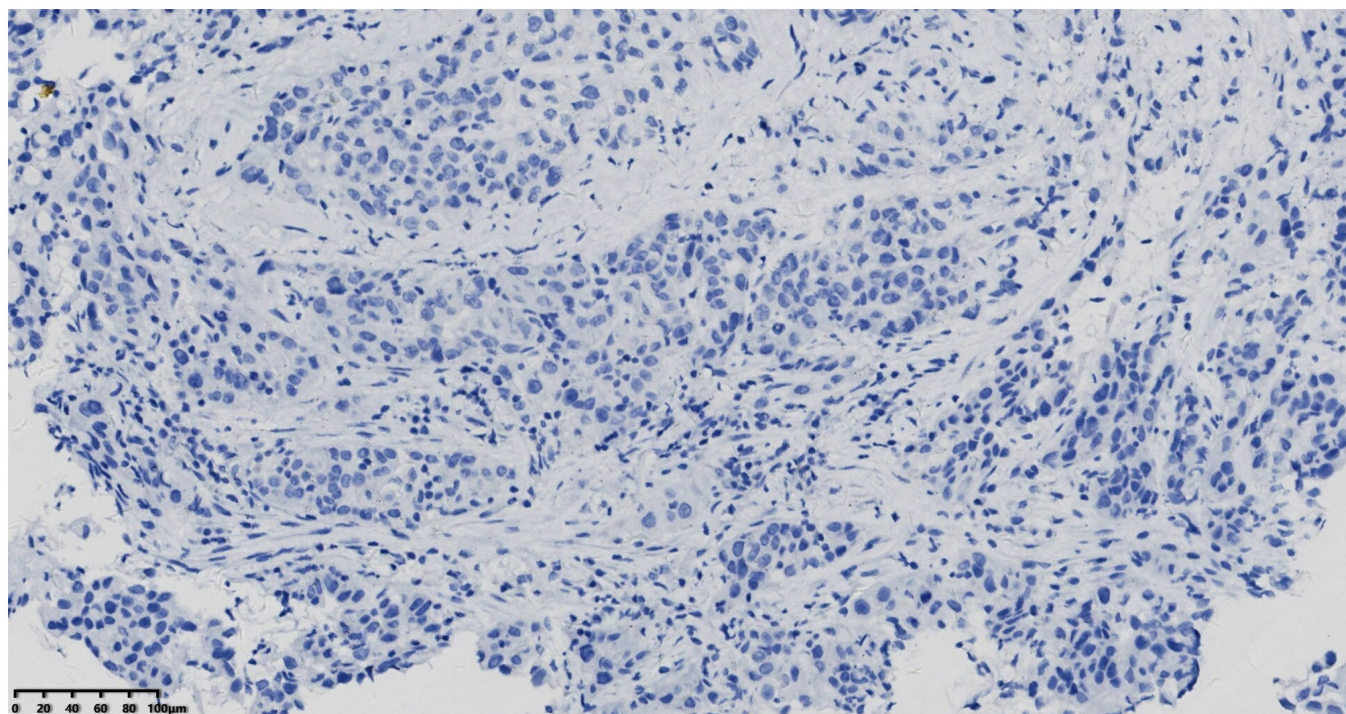


Figure S9. Tumor cells were negative for SRY-box transcription factor 2 (magnification, x200; scale bar, 100 μ m).

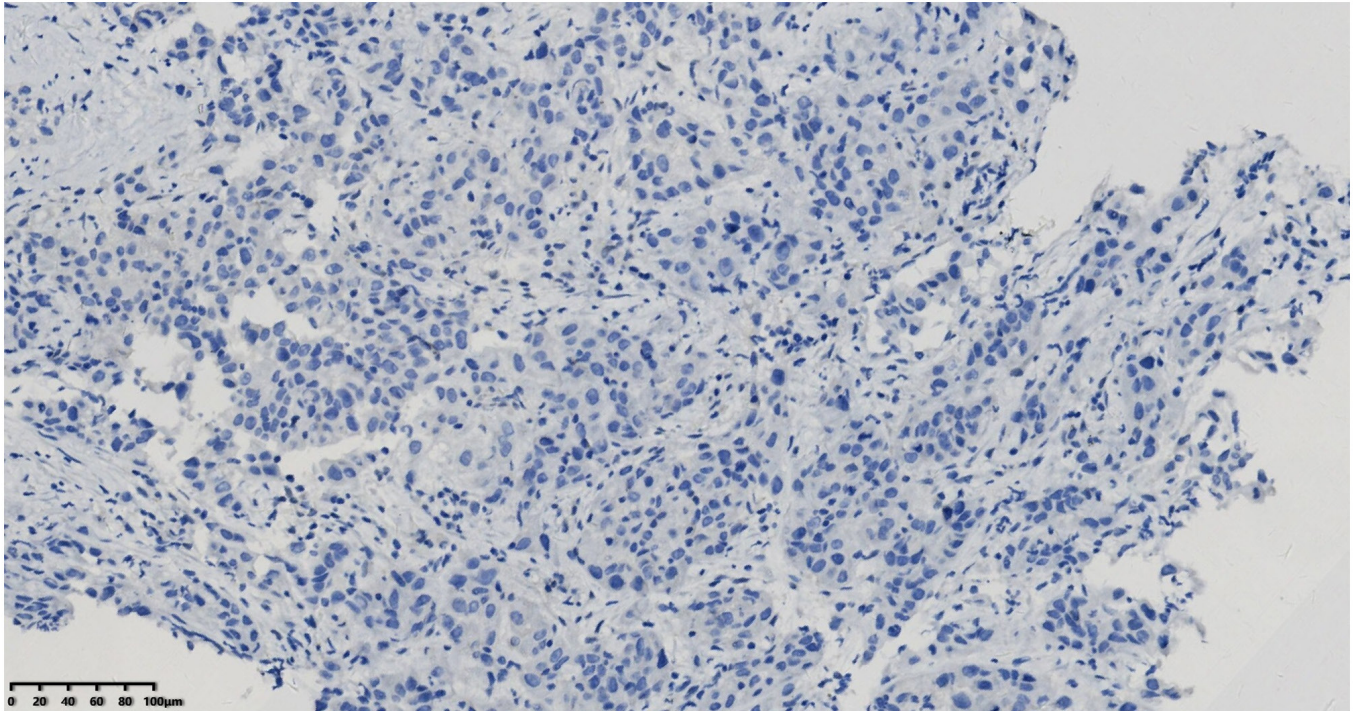


Figure S10. Tumor cells were negative for CD34 (magnification, x200; scale bar, 100 μm).

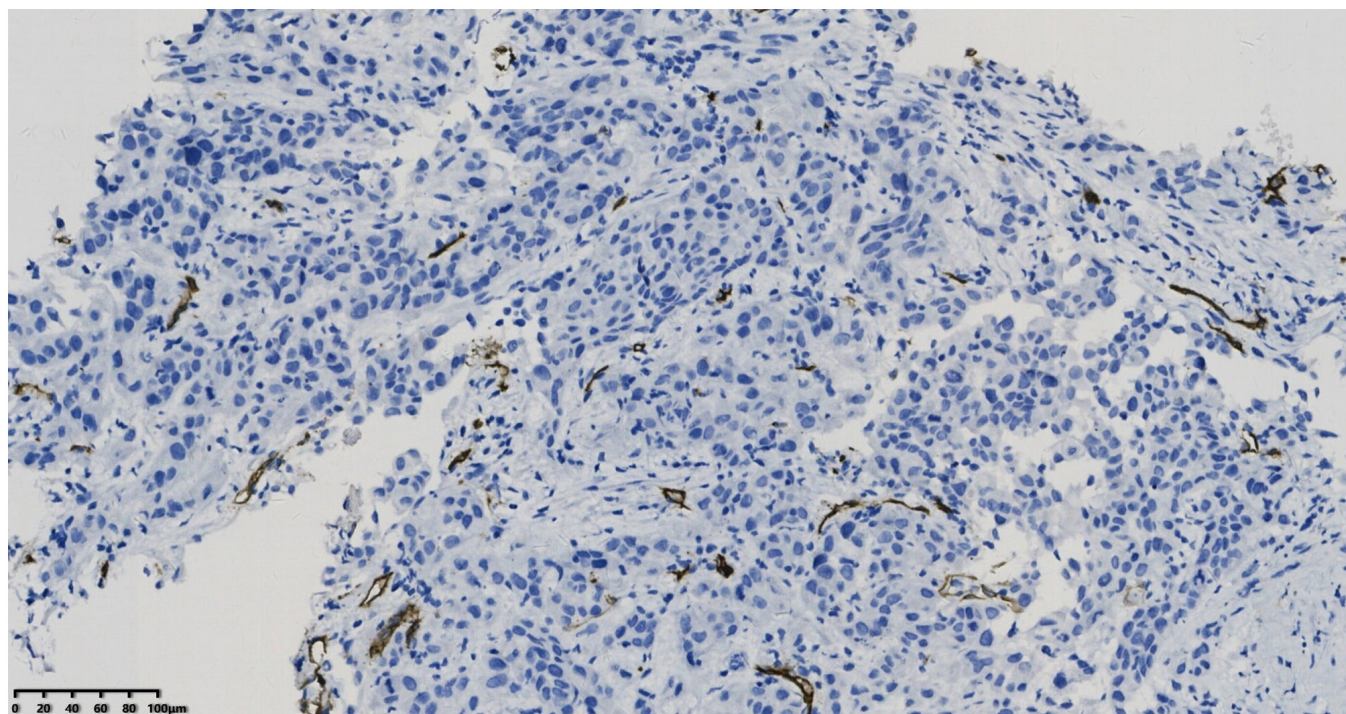


Figure S11. Tumor cells were negative for sal-like protein 4 (magnification, x200; scale bar, 100 μ m).

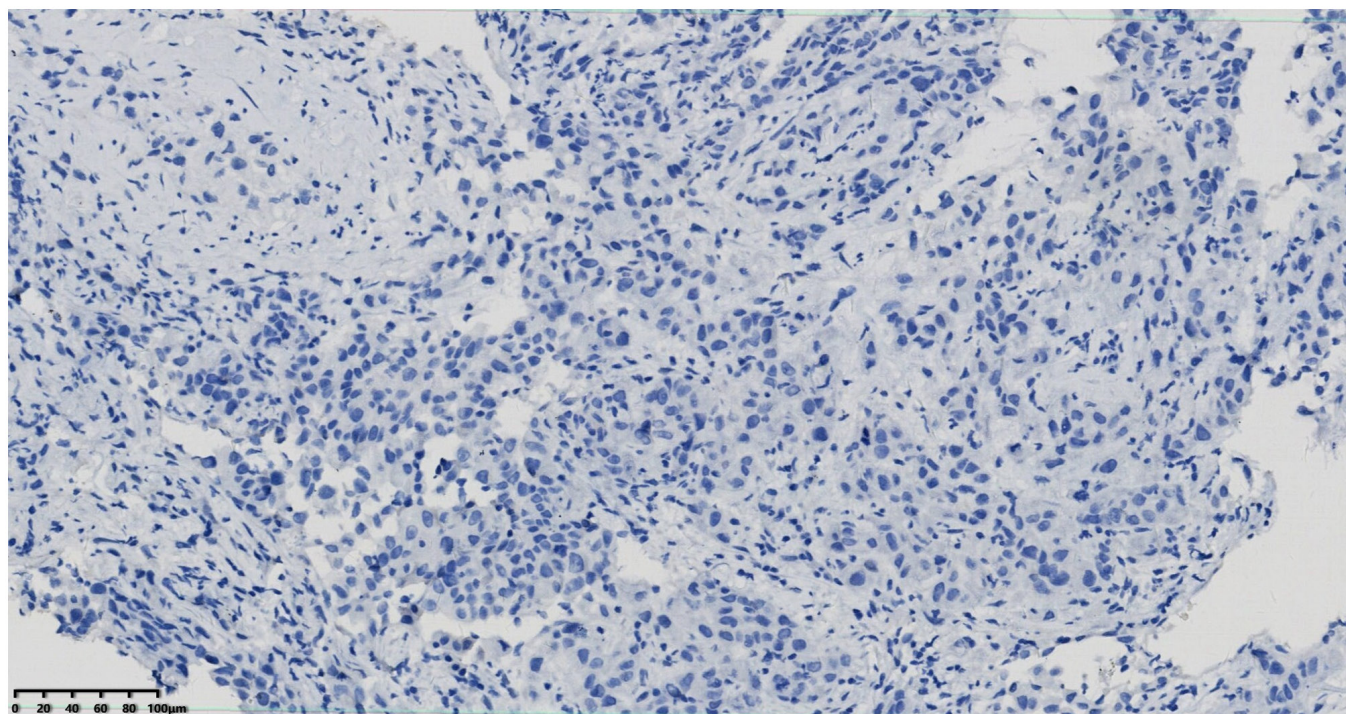


Figure S12. Tumor cells were negative for nuclear protein in testis (magnification, x200; scale bar, 100 μm).

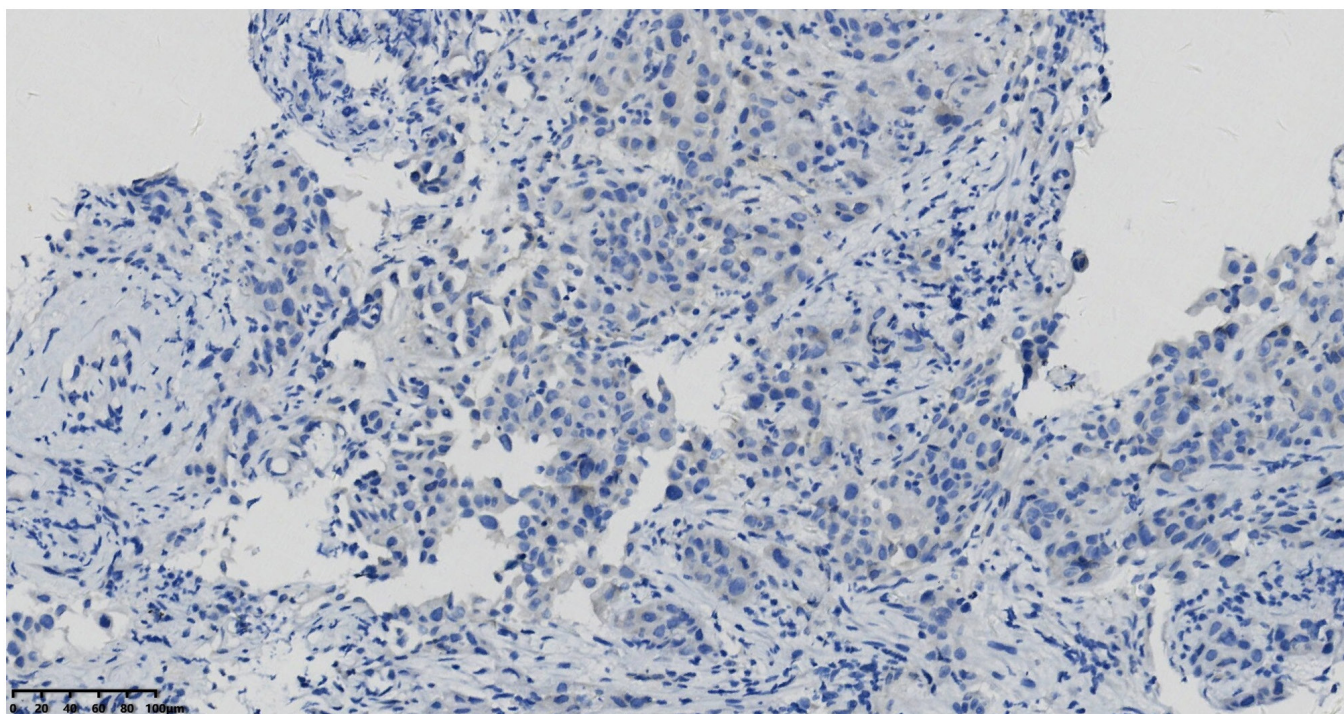


Figure S13. Tumor cells were negative for ALK (magnification, x200; scale bar, 100 μ m).

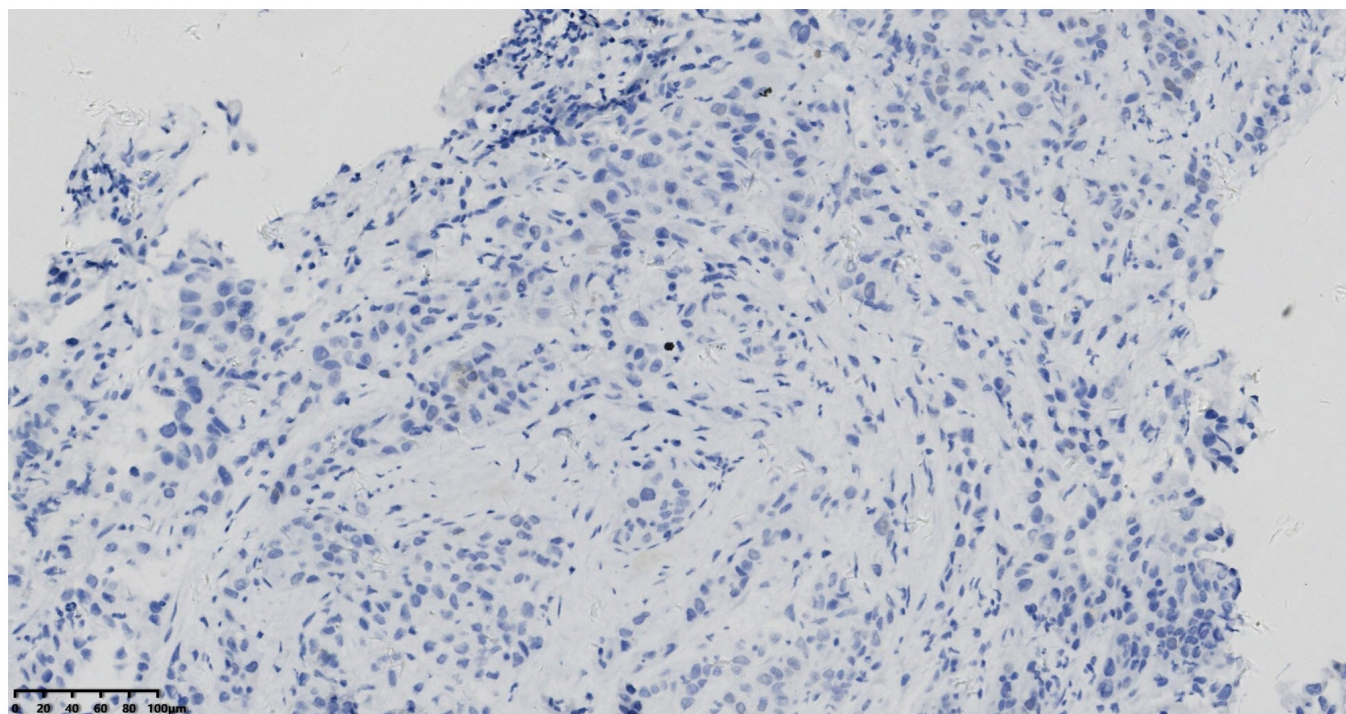


Figure S14. Tumor cells were negative for podoplanin (magnification, x200; scale bar, 100 μ m).

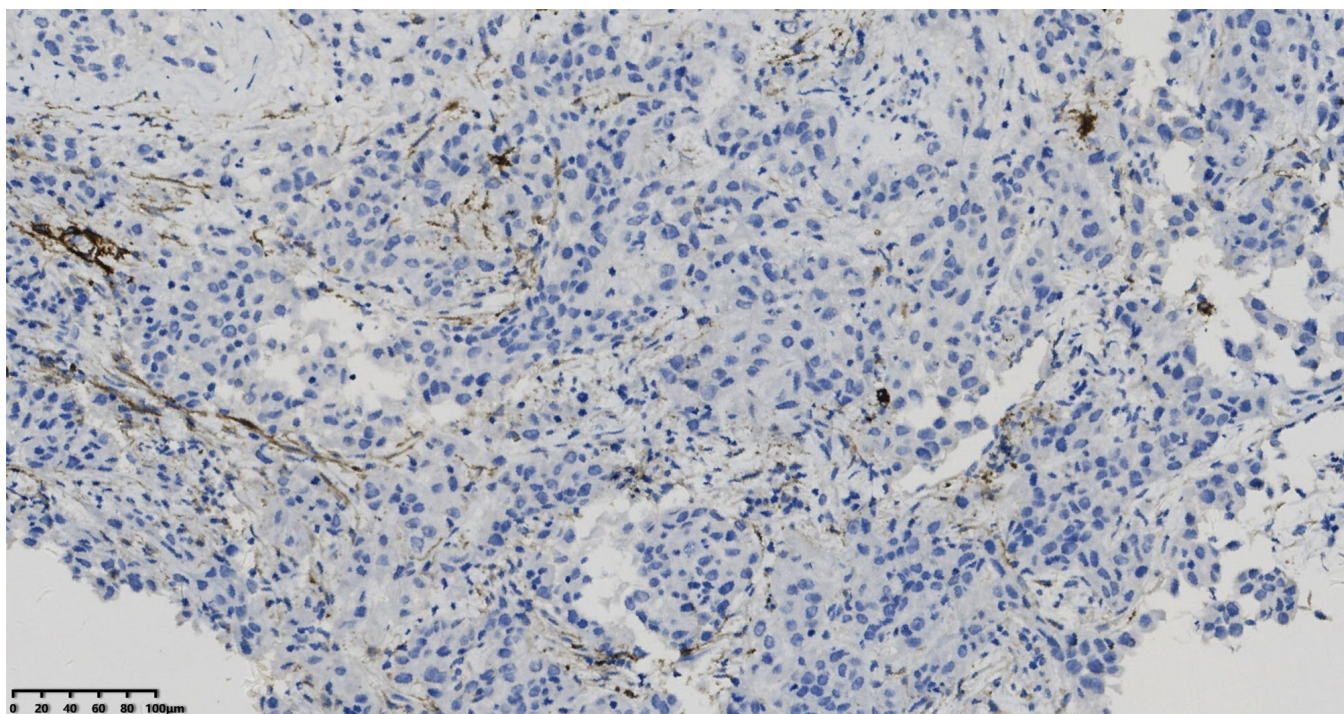


Figure S15. Tumor cells were negative for Wilm's tumor protein 1 (magnification, x200; scale bar, 100 μ m).

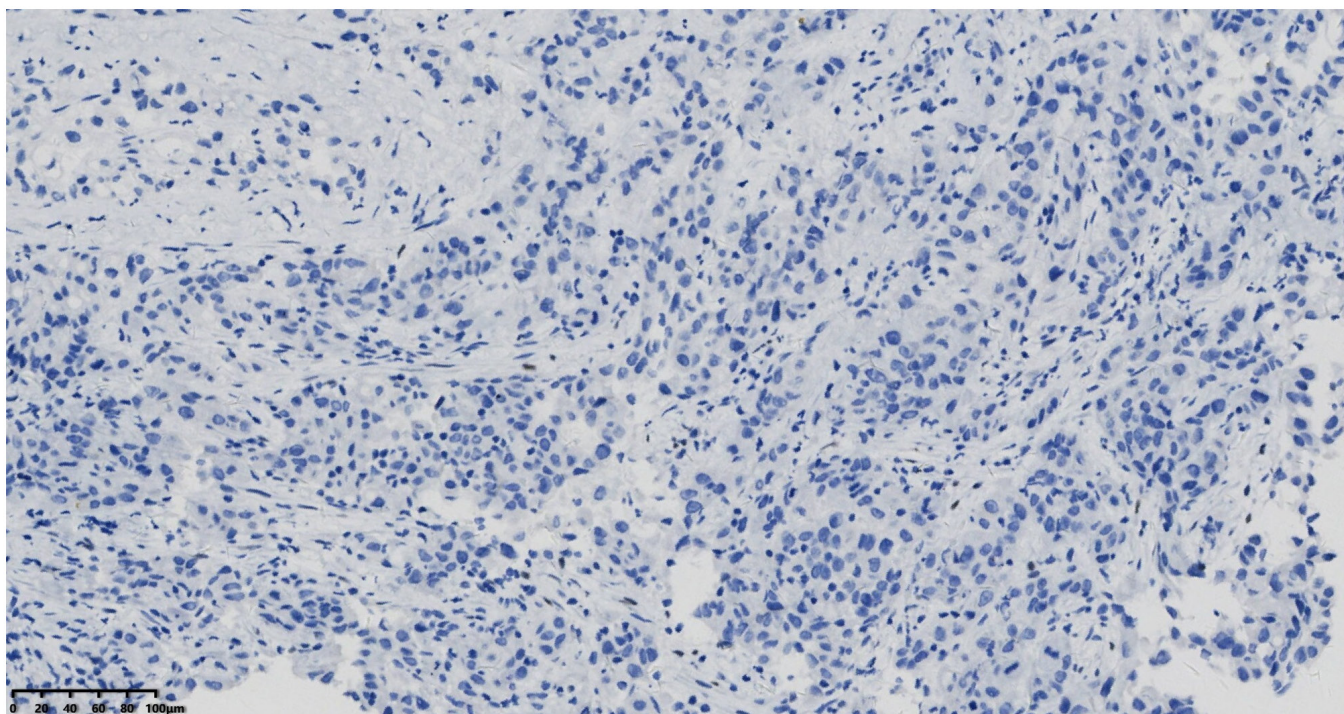


Figure S16. Tumor cells were positive for vimentin (magnification, x200; scale bar, 100 μm).

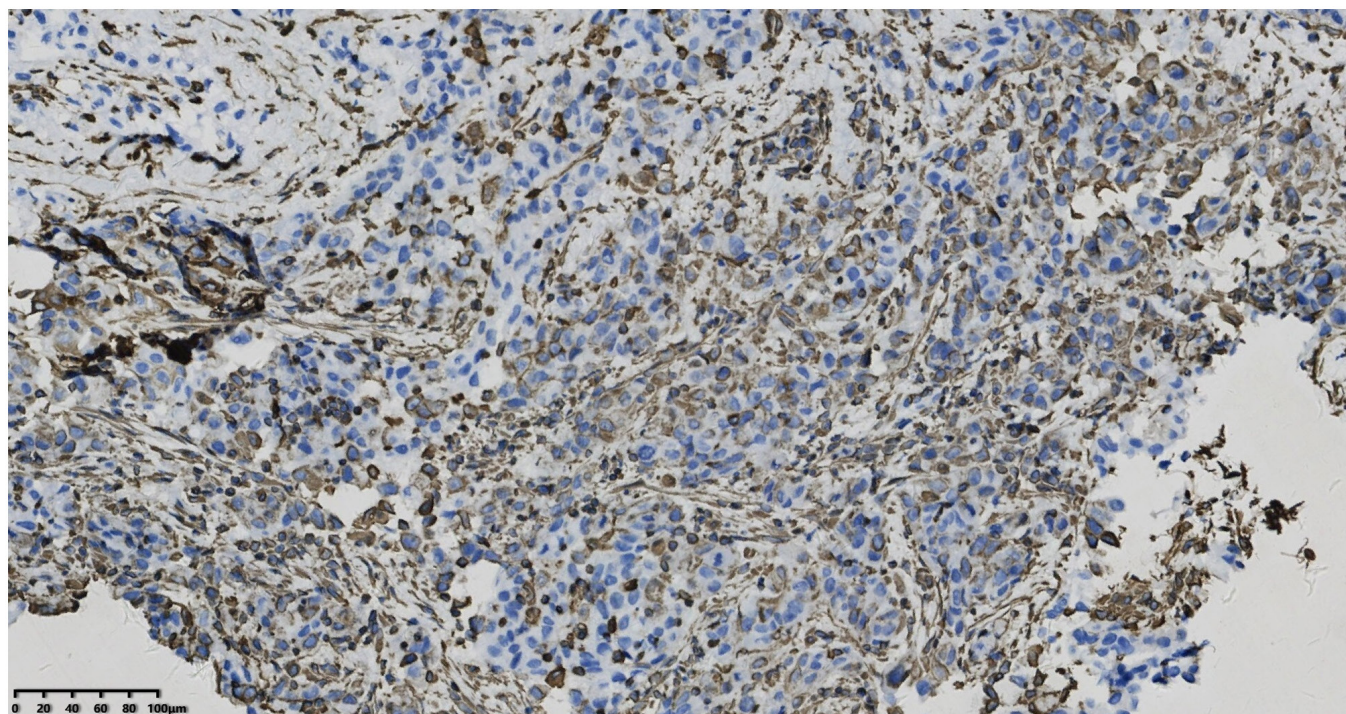


Figure S17. Tumor cells were negative for GATA binding protein 3 (magnification, x200; scale bar, 100 μ m).

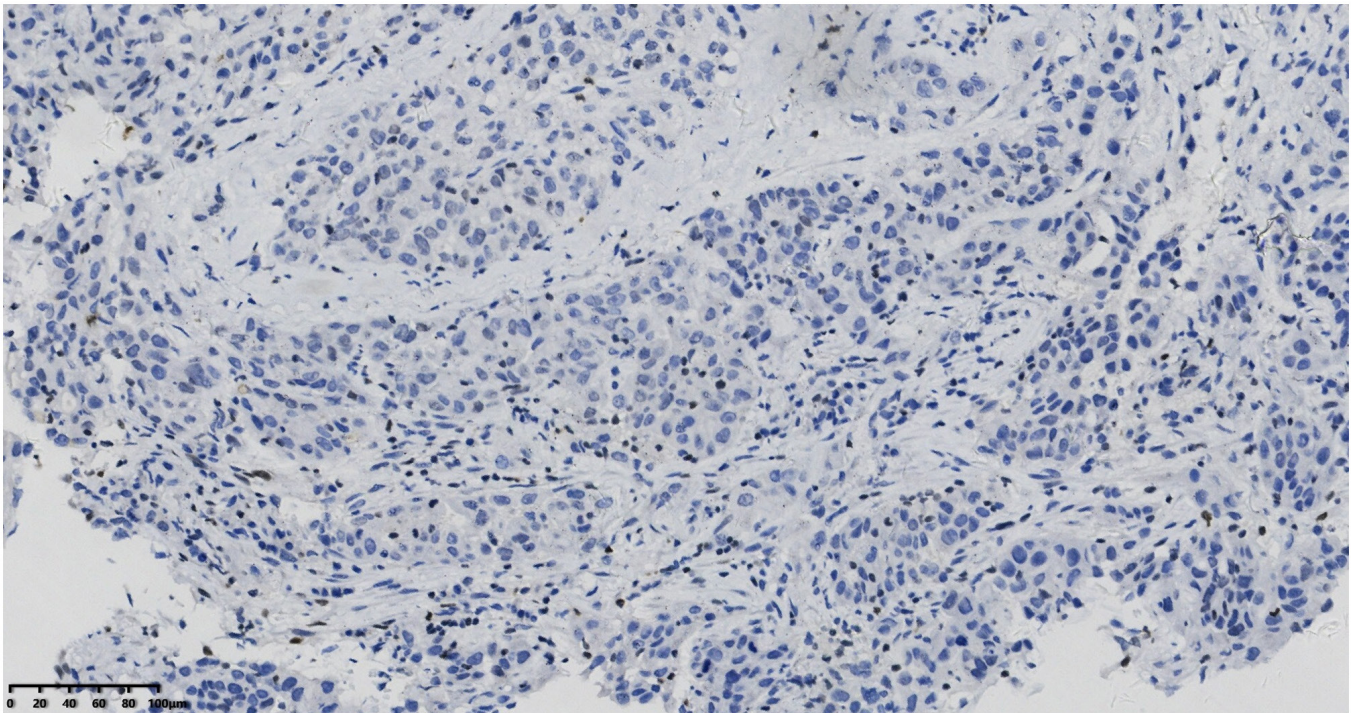


Figure S18. Tumor cells were negative for estrogen receptor (magnification, x200; scale bar, 100 μ m).

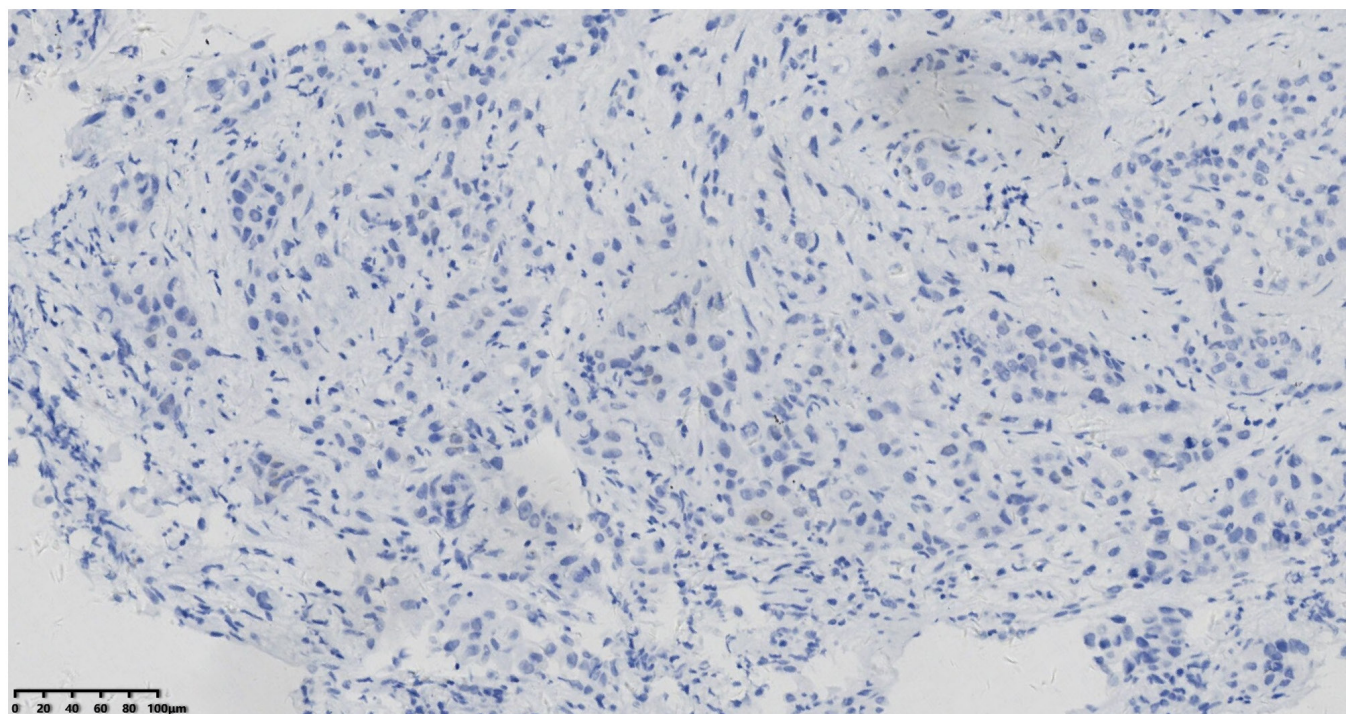


Figure S19. Tumor cells were focal weak positive for p63 (magnification, x200; scale bar, 100 μ m).

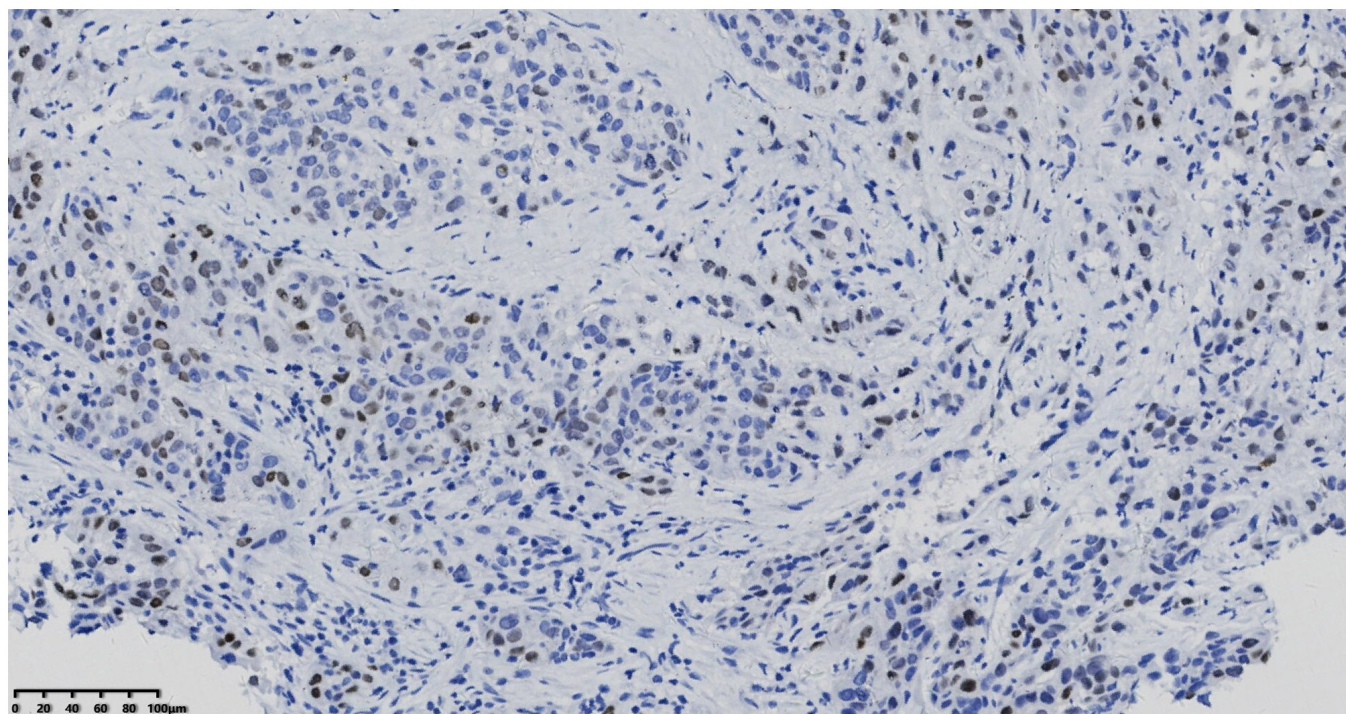


Figure S20. Tumor cells were focally positive for carcinoembryonic antigen (magnification, x200; scale bar, 100 μ m).

