

Figure S1. CT imaging during clinical course (doi.org/10.6084/m9.figshare.7063880.v1). Asterisks in the first column, and pink arrowheads in the second, third, fourth and fifth columns indicate the renal tumor (1st column), para aorta LN, left lung metastasis, #1, right lung metastasis, and left lung metastasis, #2, respectively. The labels below each image indicate the CT number and metastatic portion. CT, computed tomography; LN, lymph node.

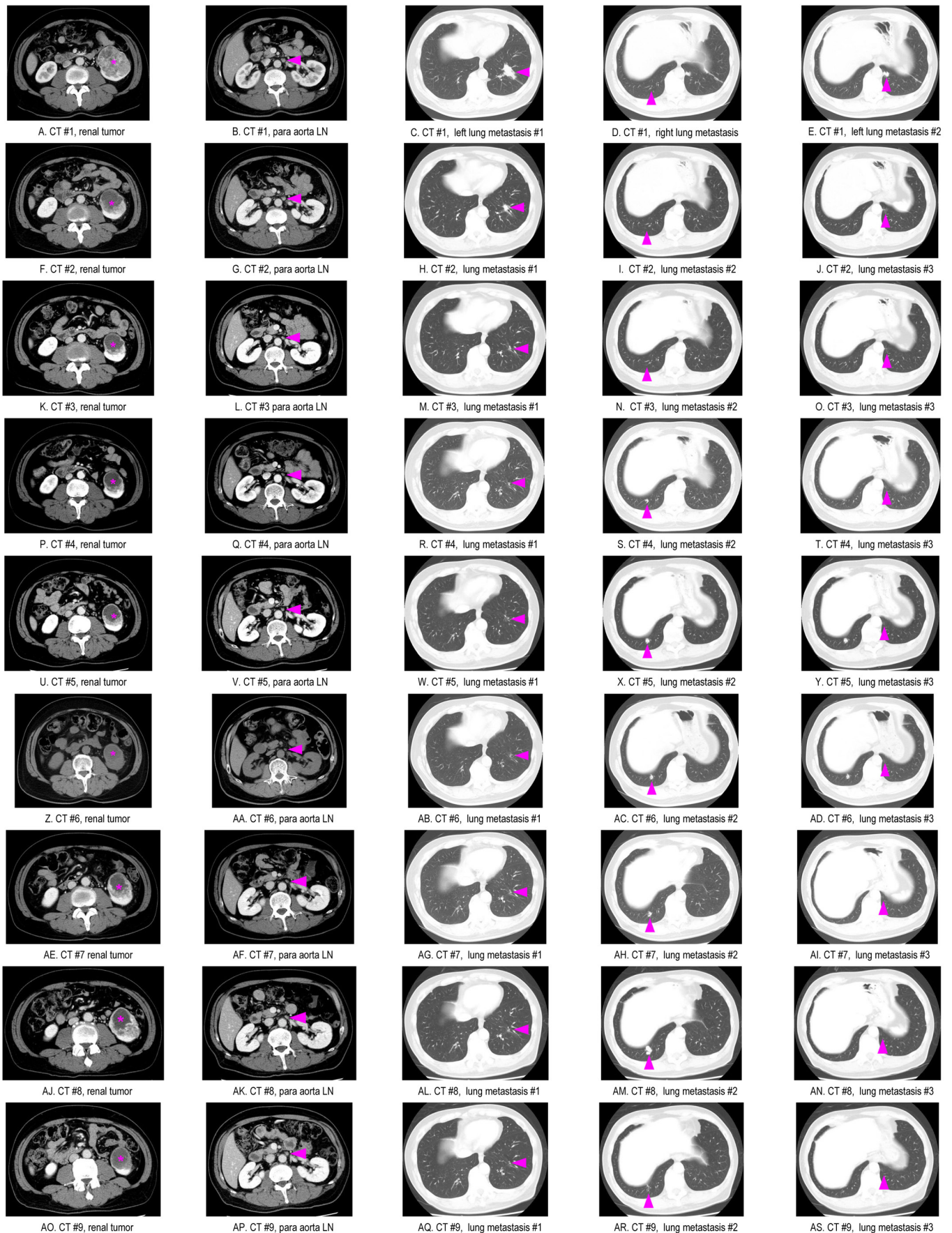


Figure S2. MRI showing brain metastasis during the clinical course (doi.org/10.6084/m9.figshare.7063922.v1). Pink arrowheads indicate the brain metastasis in T1-weighted contrast MRI. MRI, magnetic resonance imaging.

