

Figure S1. Magnetic resonance imaging of case 1 showing multiple liver metastases. (A) T1-weighted image (red box showing the metastases), (B) T2-weighted image (red box showing the metastases), (C) diffusion-weighted image and (D) T1WI+contrast-enhanced.

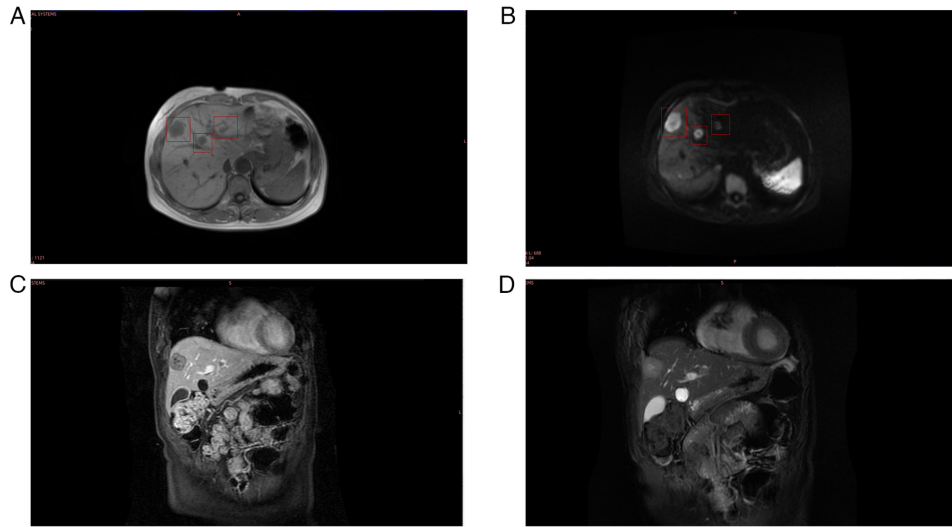


Figure S2. Immunohistochemistry of tumor tissues. CK5/6-positive staining of tumor tissues from (A) case 1 (magnification, x140) and (B) case 2 (magnification, x240). CK7-positive staining of tumor tissues from (C) case 1 (magnification, x140) and (D) case 2 (magnification, x140). (E) GATA3-positive staining of tumor tissue from case 1 and (F) GATA3-negative staining of tumor tissue from case 2. P63-negative staining of tumor tissues from (G) case 1 and (H) case 2 (magnification, x180). CK, cytokeratin; GATA3, GATA binding protein 3.

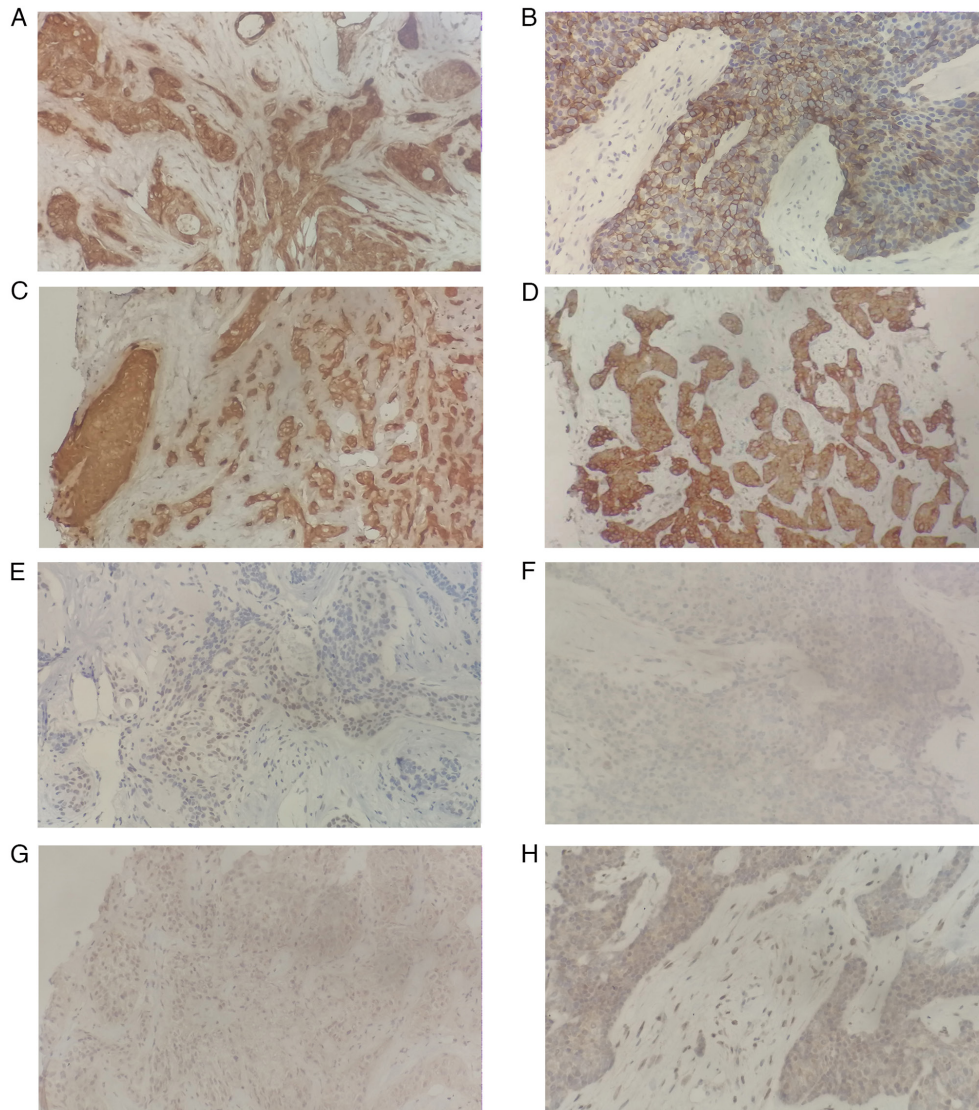


Figure S3. Immunohistochemistry of tumor tissues. Estrogen receptor-negative staining of tumor tissues from (A) case 1 (magnification, x140) and (B) case 2 (magnification, x200). Progesterone receptor-negative staining of tumor tissues from (C) case 1 (magnification, x200) and (D) case 2 (magnification, x200). Ki-67 staining of tumor tissues demonstrated a Ki-67 index of (E) 30% in case 1 (magnification, x200) and (F) 55% in case 2 (magnification, x240).

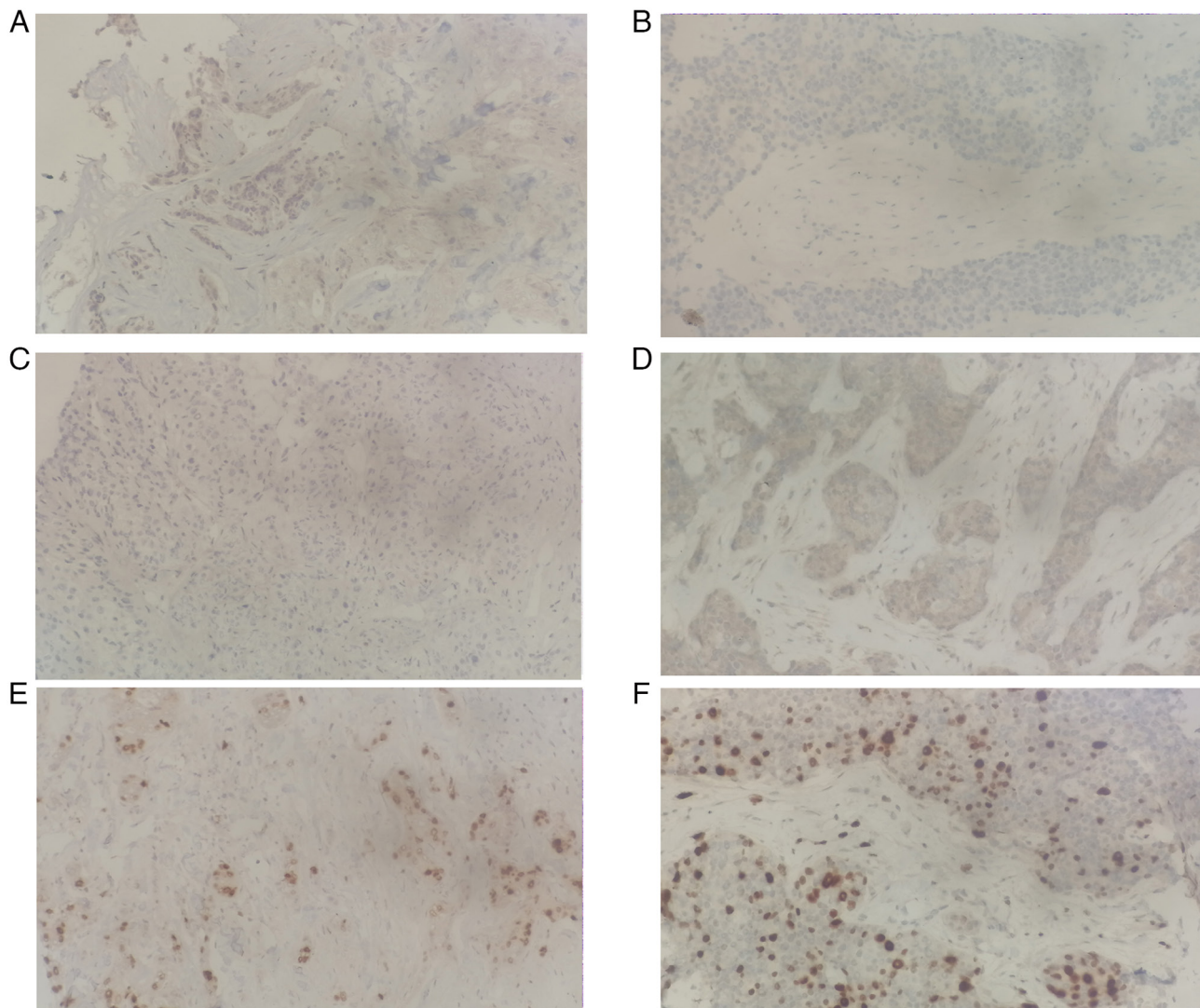


Figure S4. Fluorescence *in situ* hybridization staining of tumor tissues. No human epidermal growth factor receptor-2 amplification was demonstrated in (A) case 1 and (B) case 2. For ETS variant transcription factor 6 break-apart, there were 2G(green signal)2R(red signal) signal mode in case 1 (C) (magnification, x400) and case 2 (D) (magnification, x400).

