

Figure S1. Molecular and cytogenetic results of the pediatric female patient diagnosed with acute promyelocytic leukemia. (A) Karyotype of the patient showing 46,XX,t(15;17) (q24;q21),-21,-22 [10] (G banding). (B) Fluorescence *in situ* hybridization result was nuc ish(PML,RARA)x3(PMLconRARA)x2[148/200](PML,RARA)x2[52/200]. PML, promyelocytic leukemia; RARA, retinoic acid receptor α .

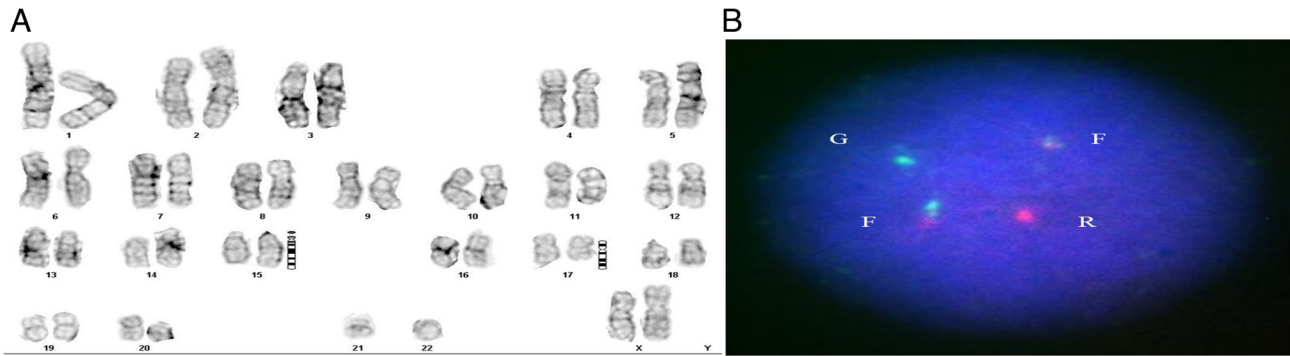


Figure S2. Three *PML/RARA* transcripts (bcr1, bcr2 and bcr3), obtained by Hema-Vision 28N tested PCR. The three molecular subtypes were visualized by agarose gel electrophoresis. *PML*, promyelocytic leukemia; *RARA*, retinoic acid receptor α .

