

Figure S1. Transcriptome profiles of uHL-60 and dHL-60 following vehicle control or LTA treatment. Heat map representing transcripts per kilobase million expression values of genes in dHL-60 and uHL-60 cells after (A) 4 and (B) 24 h of LTA treatment. dHL-60, differentiated HL-60; LTA, lipoteichoic acid; LTA1, cells treated with 1 μ g/ml LTA; LTA10, cells treated with 10 μ g/ml LTA; uHL-60, undifferentiated HL-60; Veh, vehicle.

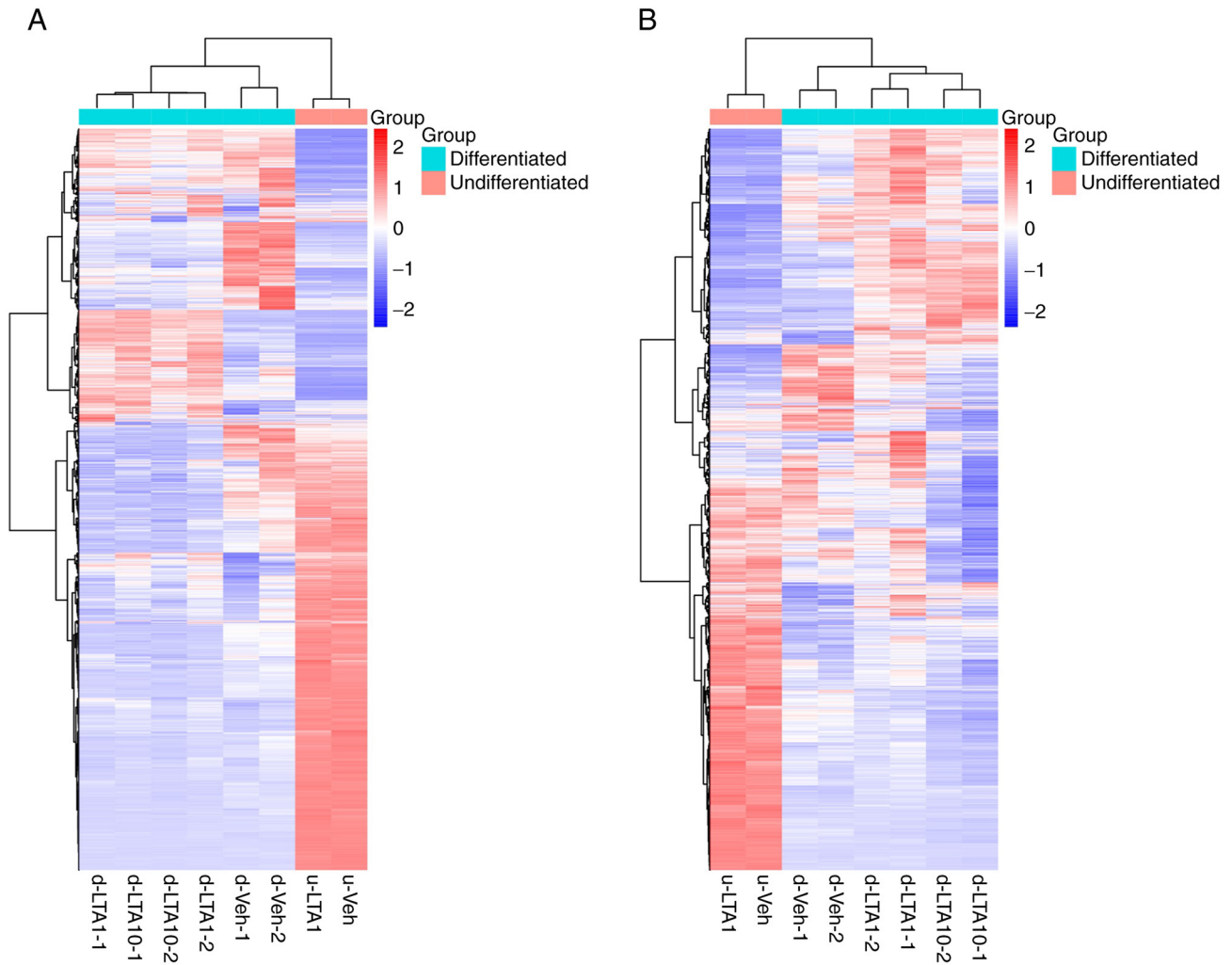


Figure S2. Volcano plots of upregulated (red) and downregulated (blue) genes showing the differential gene distribution following (A) 4 and (B) 24 h of LTA treatment. The numbers in brackets represent the number of genes. LTA, lipoteichoic acid; LTA1, cells treated with 1 $\mu\text{g/ml}$ LTA; LTA10, cells treated with 10 $\mu\text{g/ml}$ LTA.

