

Figure S1. SETDB1 in breast cancer, fibroadenoma and normal breast samples. (A) Representative IHC of control groups, including negative control using IgG in tumor and positive control using SETDB1 in normal breast and fibroadenoma tissues. Representative IHC of (B) nuclear and (C) cytoplasmic SETDB1 in breast cancer tissue with a score of 0-3 (magnification, x200). SETDB1, SET domain bifurcated 1; IHC, immunohistochemistry.

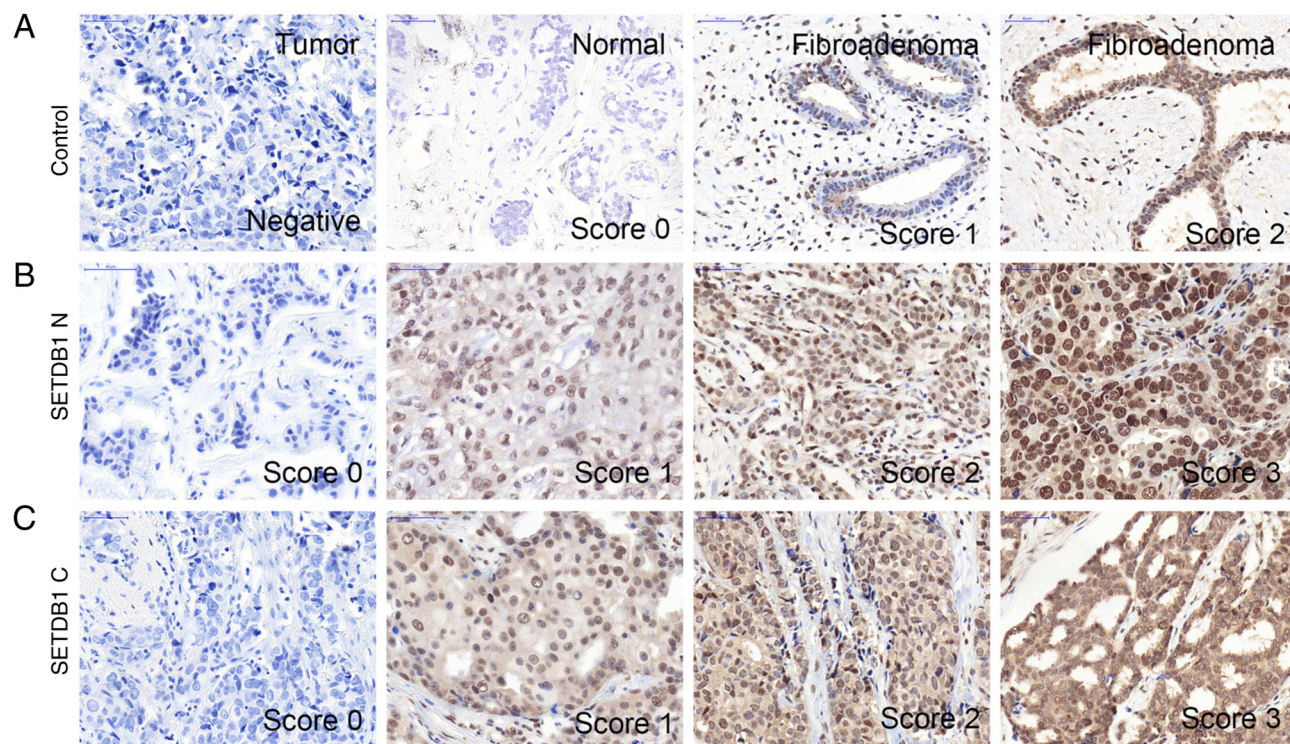


Figure S2. LC-MS detection of proteins binding with SET domain bifurcated 1. (A) Base peak of LC-MS analysis. (B) Gene Ontology pathways enrichment analysis. (C) Identification of the di-methylation site of LDHA. LC-MS, liquid chromatography-mass spectrometry.

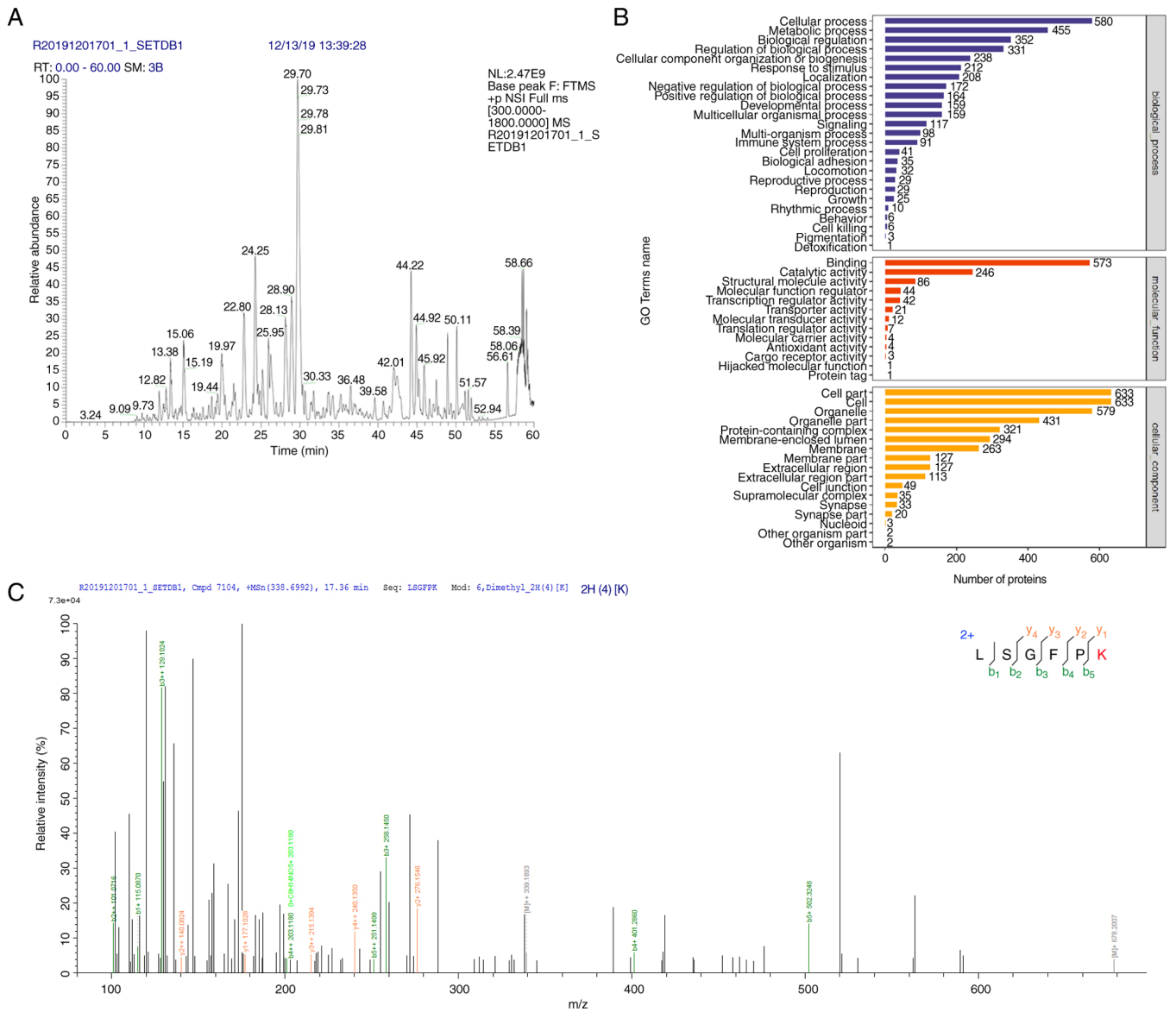


Figure S3. Co-IP of endogenous SETDB1 and LDHA. Total protein extracts of MDA-MB-231 or 293T cells were subjected to IP with (A) LDHA or (B) SETDB1 antibody. Immunoblotting of SETDB1, LDHA and GAPDH in positive control (input), negative control (IgG) and IP. Red arrow indicates IgG heavy chain; blue arrow indicates IgG light chain. IP, immunoprecipitation; SETDB1, SET domain bifurcated 1; LDHA, lactate dehydrogenase A.

