

Figure S1. Flow chart of the patient selection process.

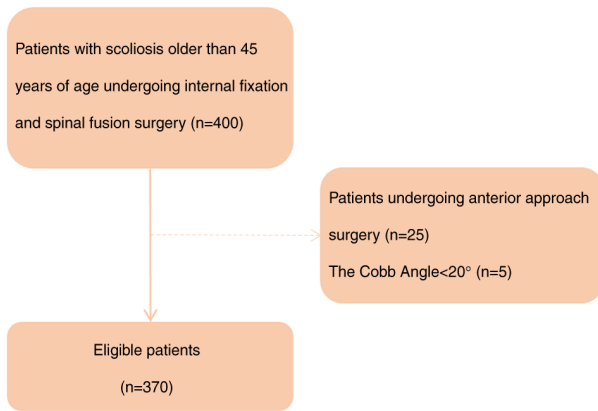


Figure S2. Heatmap displaying the correlation analysis results between variables, with color intensity indicating the magnitude of correlation (blue indicates a positive correlation and red indicates a negative correlation).

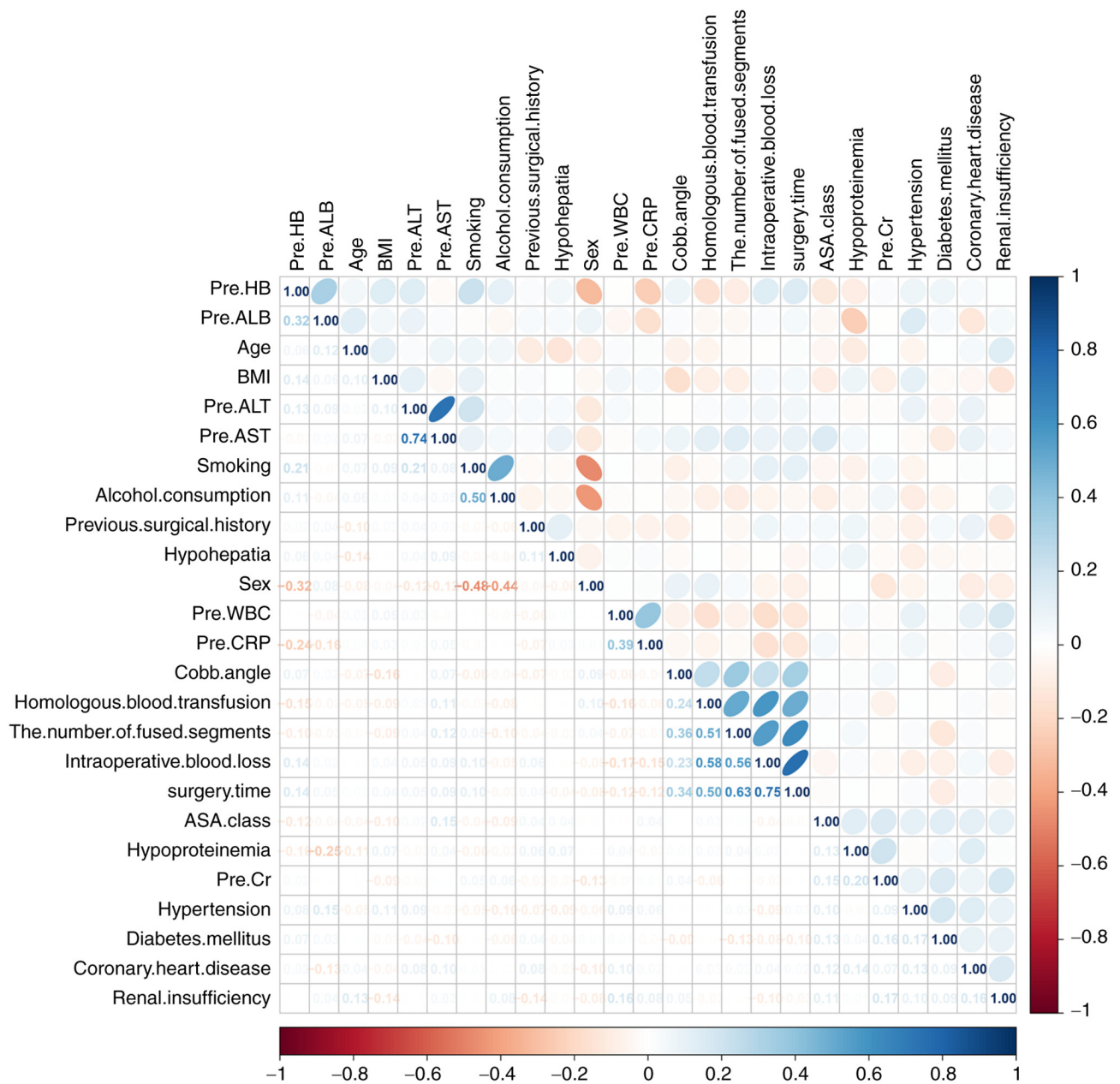


Figure S3. Restricted cubic histogram produced of BMI in the continuous variables in the dynamic modal plots, demonstrating that the continuous variables are linearly distributed.

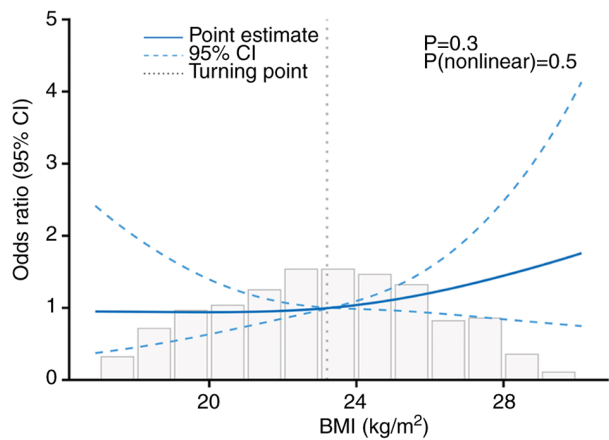


Figure S4. Restricted cubic histogram made of pre-WBC in the continuous variables in the dynamic modal plots, demonstrating that the continuous variables are linearly distributed. Pre-WBC, preoperative white blood cell count.

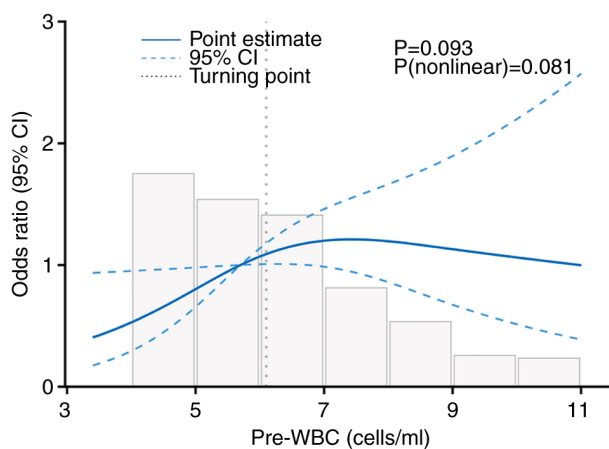


Figure S5. Restricted cubic histogram made of surgery time in the continuous variables in the dynamic modal plots, demonstrating that the continuous variables are linearly distributed.

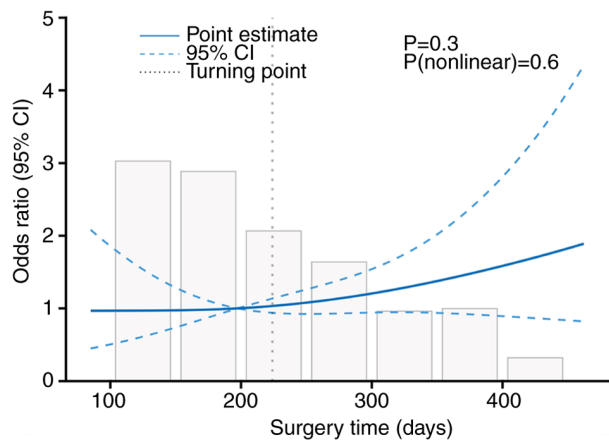


Figure S6. Restricted cubic histogram made of pre-CRP in the continuous variables in the dynamic modal plots, demonstrating that the continuous variables are linearly distributed. Pre-CRP, preoperative C-reactive protein.

