

Figure S1. Subgroup analysis of the source of extracellular vesicle for modified neurological severity score. BMSCs, bone marrow mesenchymal stem cells; DPSCs, dental pulp stem cells; ADSCs, adipose-derived stem cells; SD, standardized difference; CI, confidence intervals; df, degrees of freedom; IV, inverse variance.

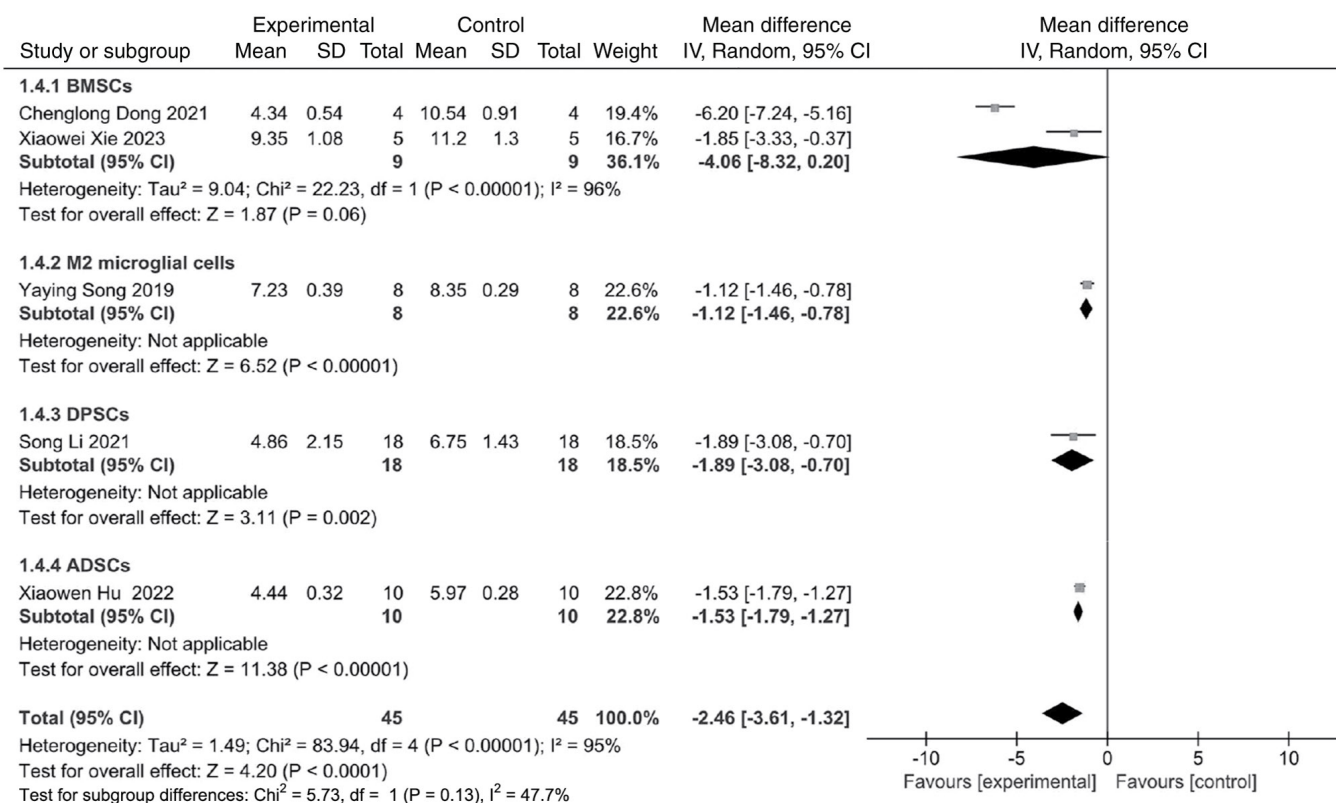


Figure S2. Subgroup analysis of the source of extracellular vesicle for apoptotic rate. BMSCs, bone marrow mesenchymal stem cells; ADSCs, adipose-derived stem cells; HUCPVCs, human umbilical cord perivascular cells; SD, standardized difference; CI, confidence intervals; df, degrees of freedom; IV, inverse variance.

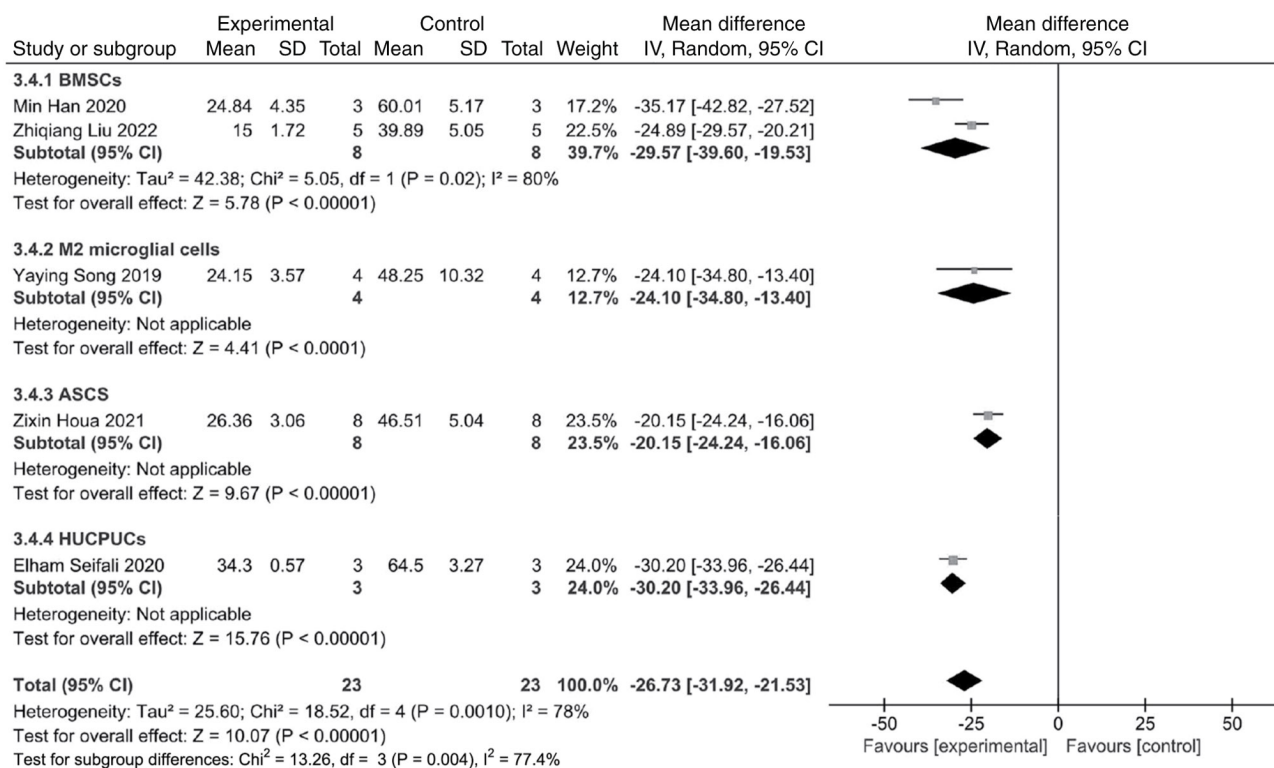


Figure S3. Subgroup analysis of the source of extracellular vesicle for infarction volume. BMSCs, bone marrow mesenchymal stem cells; DPSCs, dental pulp stem cells; ADSCs, adipose-derived stem cells; hPMSCs, human placental MSCs; SD, standardized difference; CI, confidence intervals; df, degrees of freedom; IV, inverse variance.

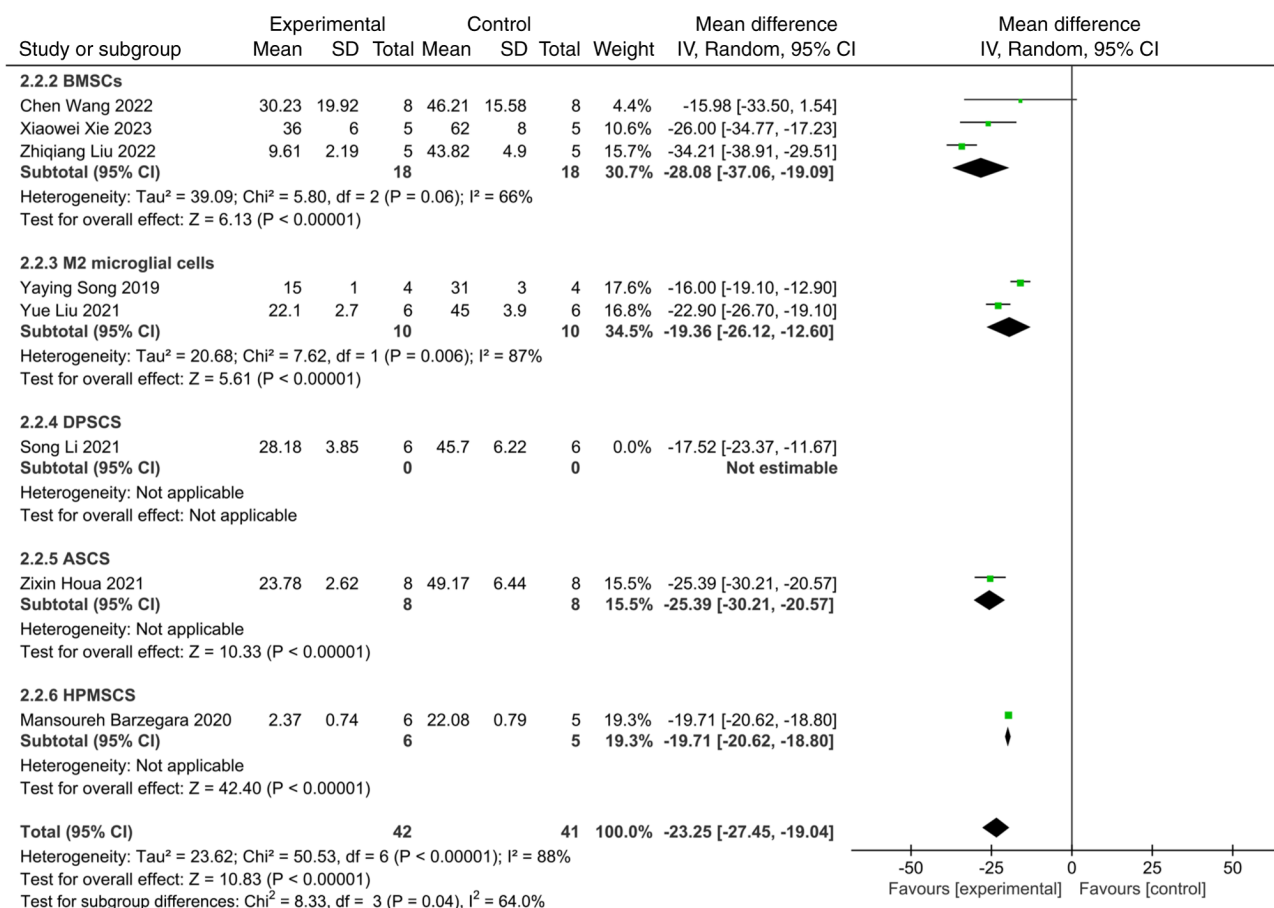


Figure S4. Subgroup analysis of animal species for modified neurological severity score. SD, standardized difference; CI, confidence intervals; df, degrees of freedom; IV, inverse variance.

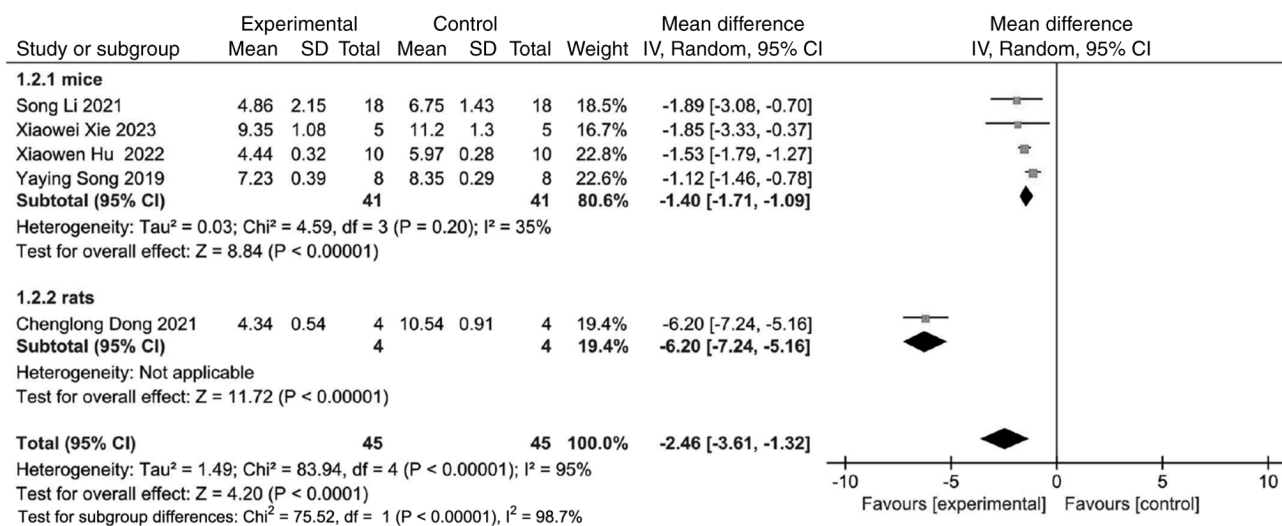


Figure S5. Subgroup analysis of animal species for apoptotic rate. SD, standardized difference; CI, confidence intervals; df, degrees of freedom; IV, inverse variance.

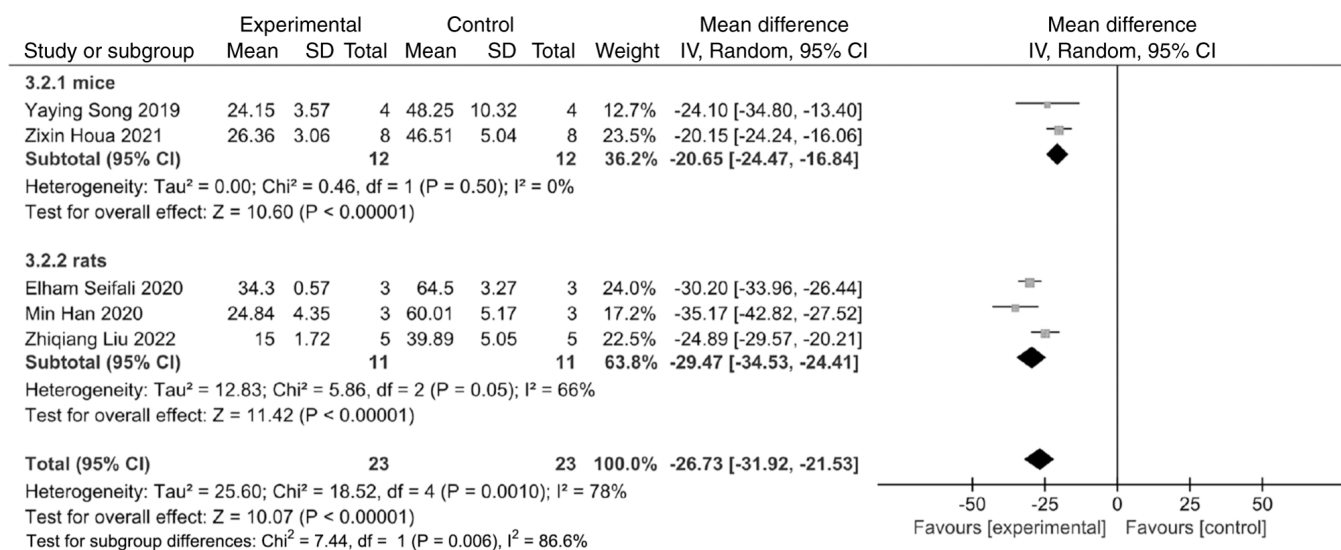


Figure S6. Subgroup analysis of animal species for infarction volume. SD, standardized difference; CI, confidence intervals; df, degrees of freedom; IV, inverse variance.

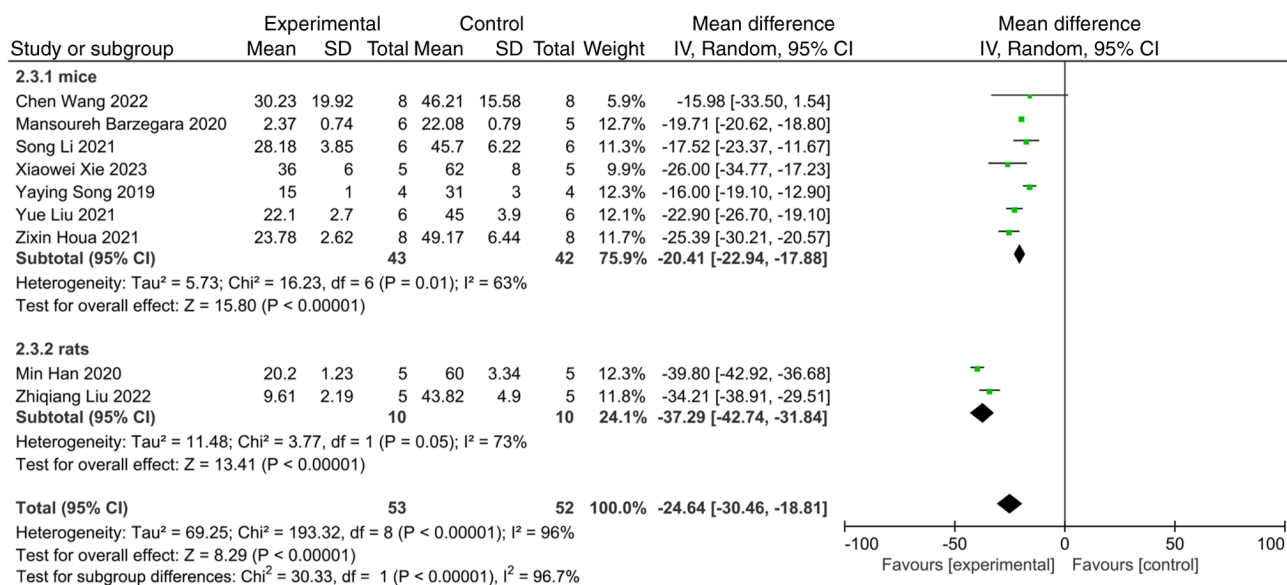


Figure S7. Subgroup analysis of injection method for modified neurological severity score. SD, standardized difference; CI, confidence intervals; df, degrees of freedom; IV, inverse variance.

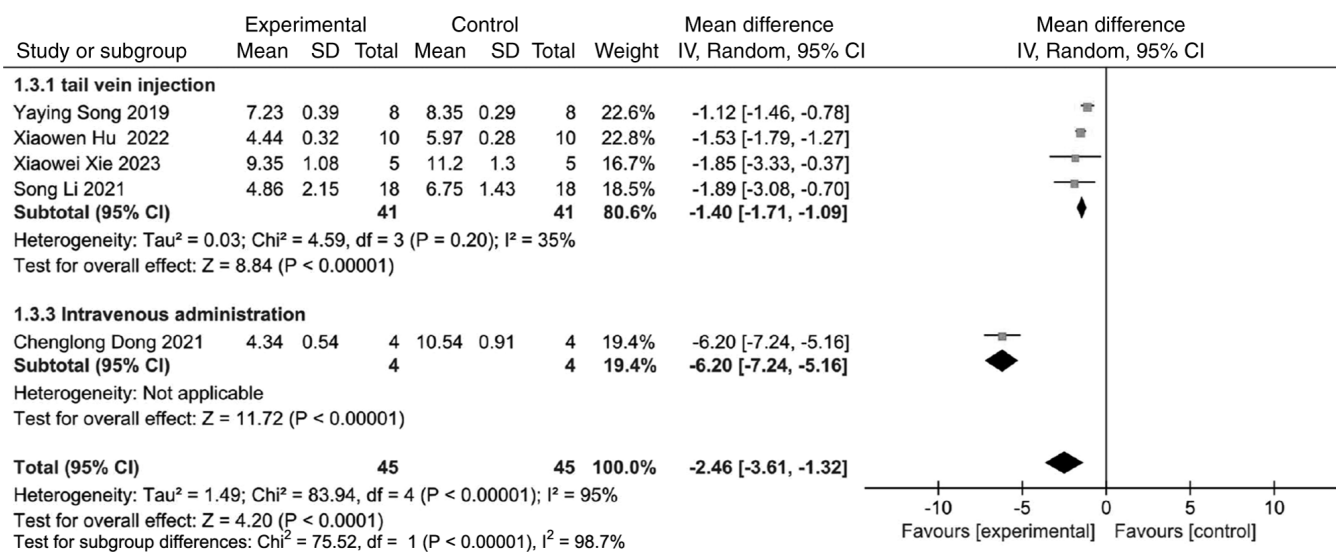


Figure S8. Subgroup analysis of injection method for apoptotic rate. SD, standardized difference; CI, confidence intervals; df, degrees of freedom; IV, inverse variance.

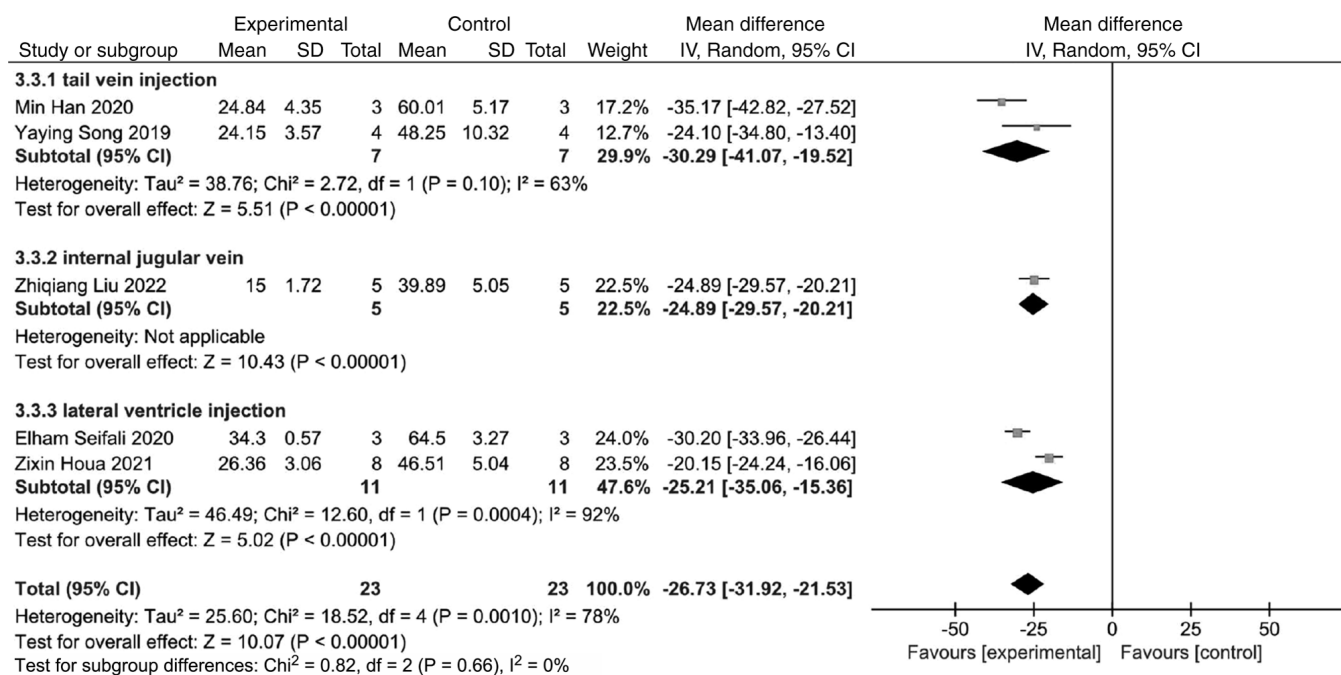




Figure S9. Subgroup analysis of injection method for infarction volume. SD, standardized difference; CI, confidence intervals; df, degrees of freedom; IV, inverse variance.

