

Figure S1. Effect of PFG on the apoptosis of SKOV3 and A2780 cells. DNA fragments were stained with TUNEL (green) and DAPI (blue), and detected by fluorescence microscopy. TUNEL-positive ovarian cancer cells are shown (magnification, x200). Data are presented as the mean \pm SEM (n=3). One-way ANOVA was applied to establish statistical significance. *P<0.05, **P<0.01 vs. control group. PFG, paeoniflorigenone.

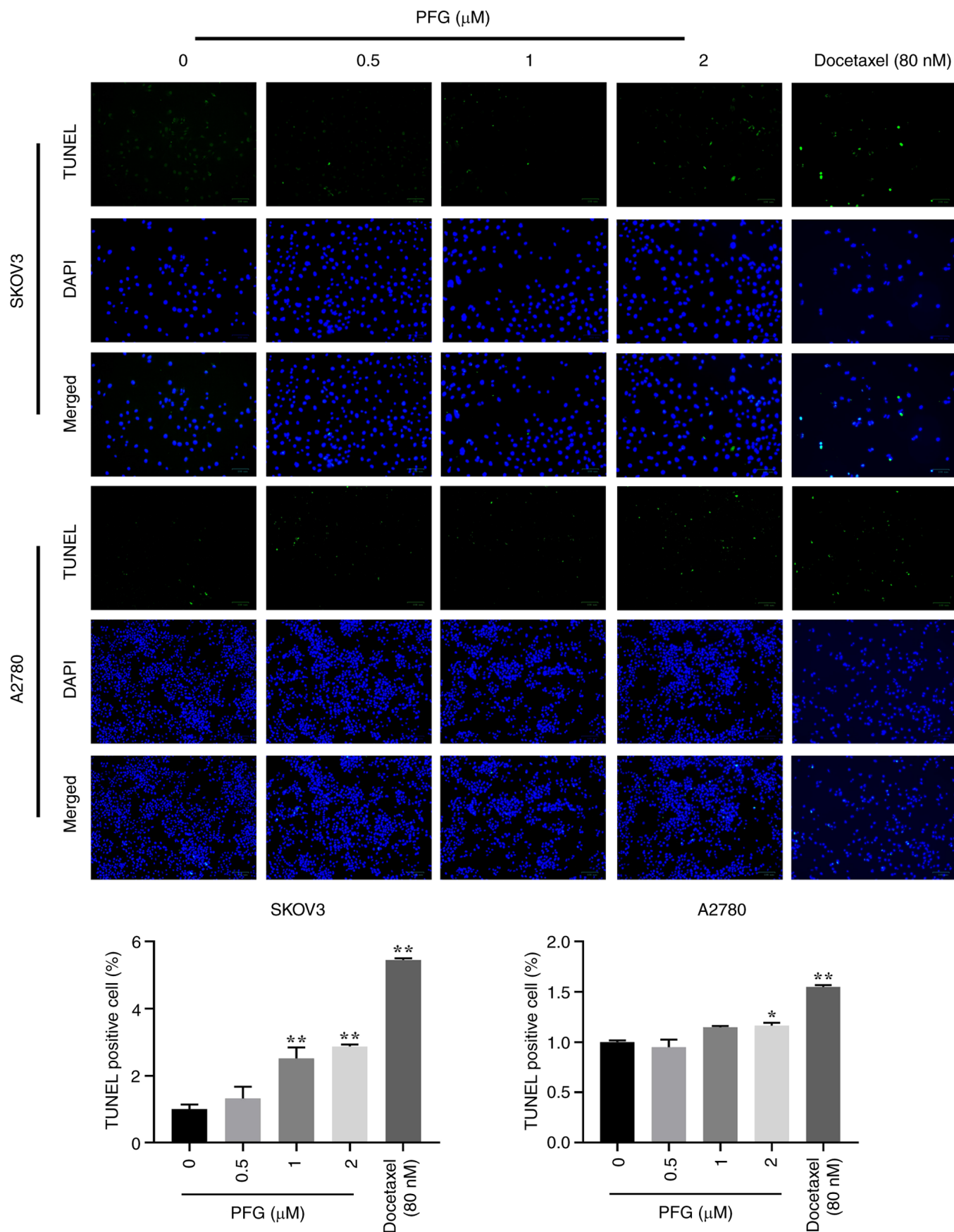


Figure S2. Wnt/ β -catenin pathway is critical in the inhibition of ovarian cancer by PFG. SKOV3 and A2780 cells were treated with Wnt/ β -catenin pathway inhibitor, XAV939 (50 nM), PFG (2 μ M) or a combination of the two drugs for 24 h. (A) Pathway-related proteins were analyzed by western blotting. (B) Cell migration was examined using the wound-healing assay and was observed under a light microscope at 0 and 24 h (magnification, x200); cell migration rate was calculated according to the wound-healing area. Data are presented as the mean \pm SEM (n=3). One-way ANOVA was applied to establish statistical significance. *P<0.05, **P<0.01 vs. control group. PFG, paeoniflorigenone.

