

Figure S1. Immunohistochemical staining showing (A) AE1/AE3 focally positively expressed in epithelial cells of the skin appendages (magnification, x200), (B) epithelial membrane antigen focally positively expressed in epithelial cell of the skin appendages (magnification, x100), (C) ERG expressed in vascular endothelial cells (magnification, x200), (D) tumor cells negative for STAT6 (magnification, x200), (E) smooth muscle actin strongly expressed in vascular smooth muscle cells (magnification, x200) and (F) Desmin expressed in vascular smooth muscle cells (magnification, x200). AE, anion exchanger; ERG, ETS-related gene.

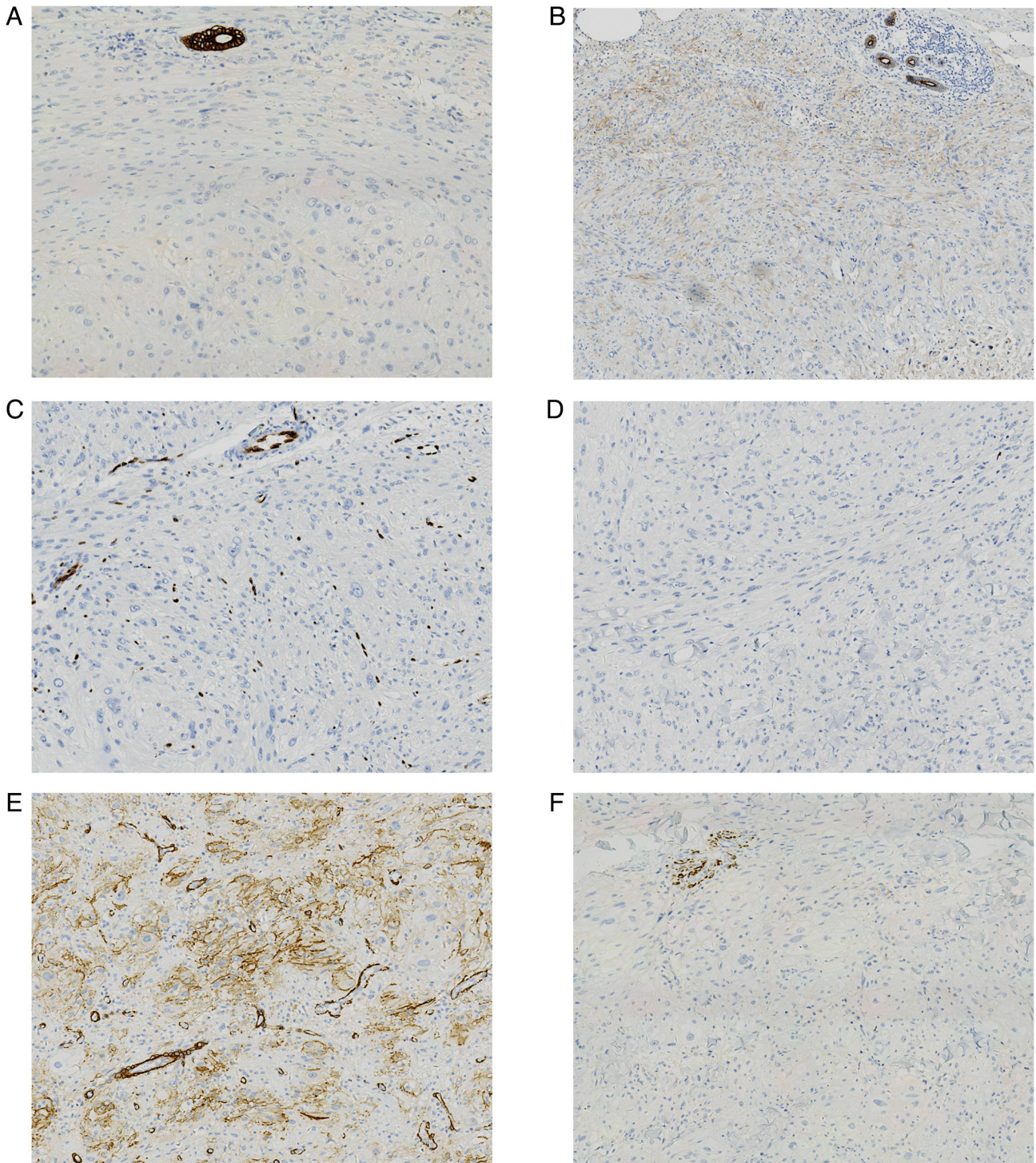


Figure S2. Immunohistochemical staining demonstrating that the tumor cells were negative for (A) S100, (B) CD10, (C) CD117, (D) discovered on GIST-1 and (E) anaplastic lymphoma kinase (magnification, x200).

