

Figure S1. CD44⁺/CD24⁻ cells (CSC) from MDA-MB-231 and BT-549 mammospheres were isolated by magnetic-activated cell sorting and analyzed for CD44 and CD24 expression using flow cytometry. ***P<0.001. ad, adherent; CSCs, cancer stem cells.

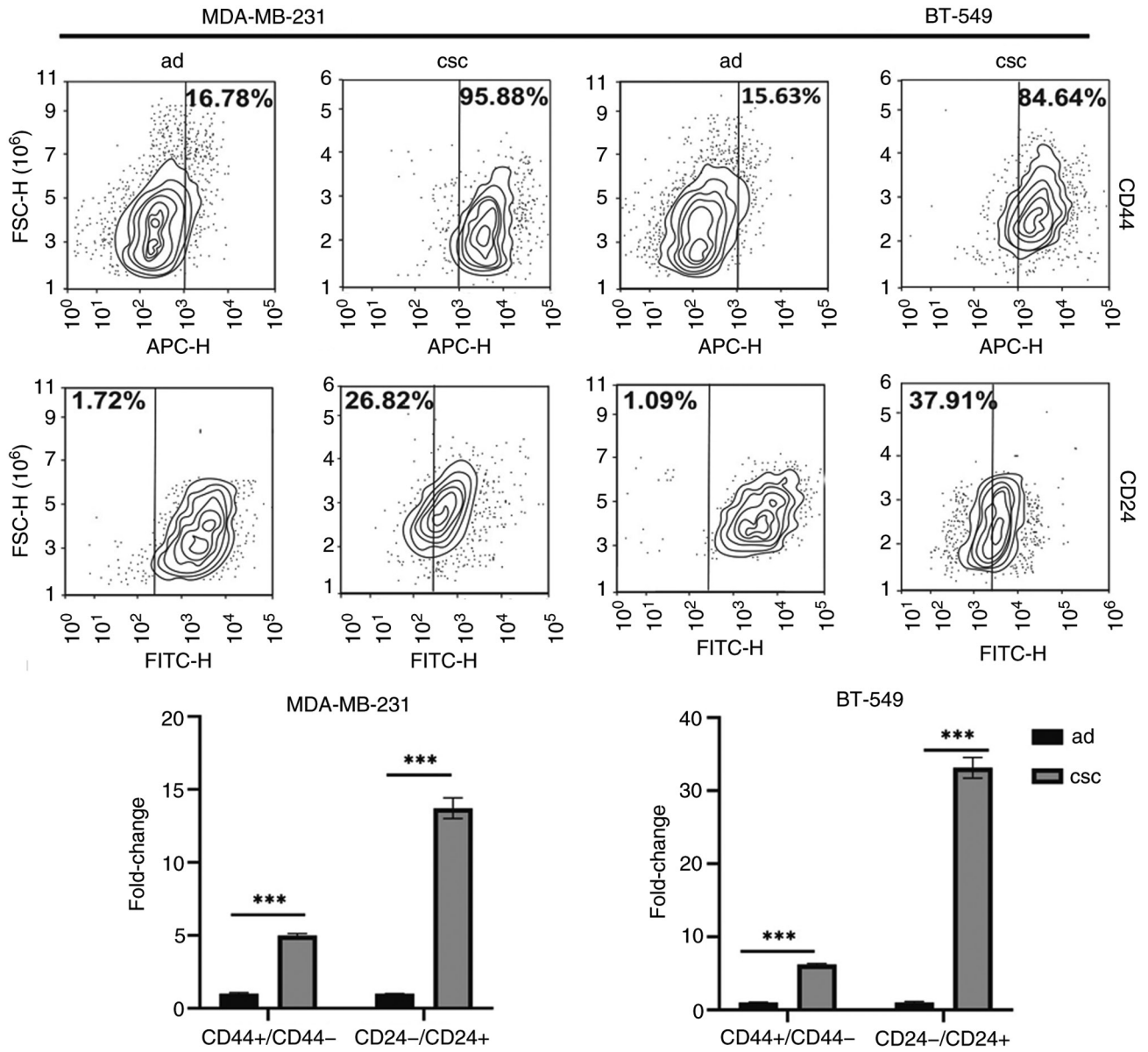


Figure S2. Proliferation curves of MDA-MB-231 and BT-549 spheroids treated with UA. The IC_{50} are labeled. (A) Proliferation curves of MDA-MB-231 spheroids treated with UA for 24 h. (B) Proliferation curves of BT-549 spheroids treated with UA for 24 h. UA, ursolic acid.

