

Figure S1. Short tandem repeat locus analysis of the PE8 cell line, generated by Applied Biosystems (Thermo Fisher Scientific, Inc.).

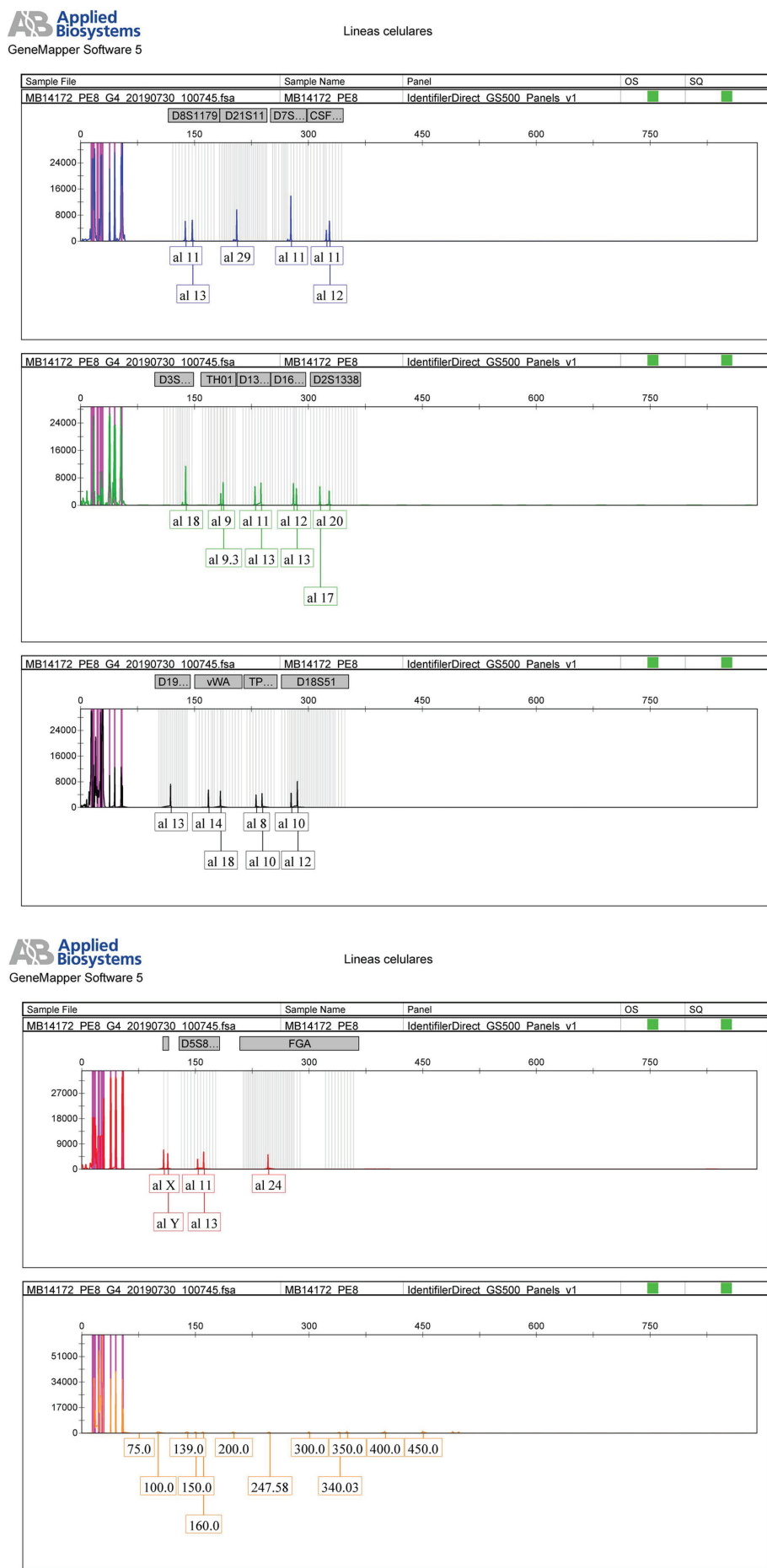


Figure S2. Short tandem repeat locus analysis of PE9 cell line, generated by Applied Biosystems (Thermo Fisher Scientific, Inc.).



Lineas celulares

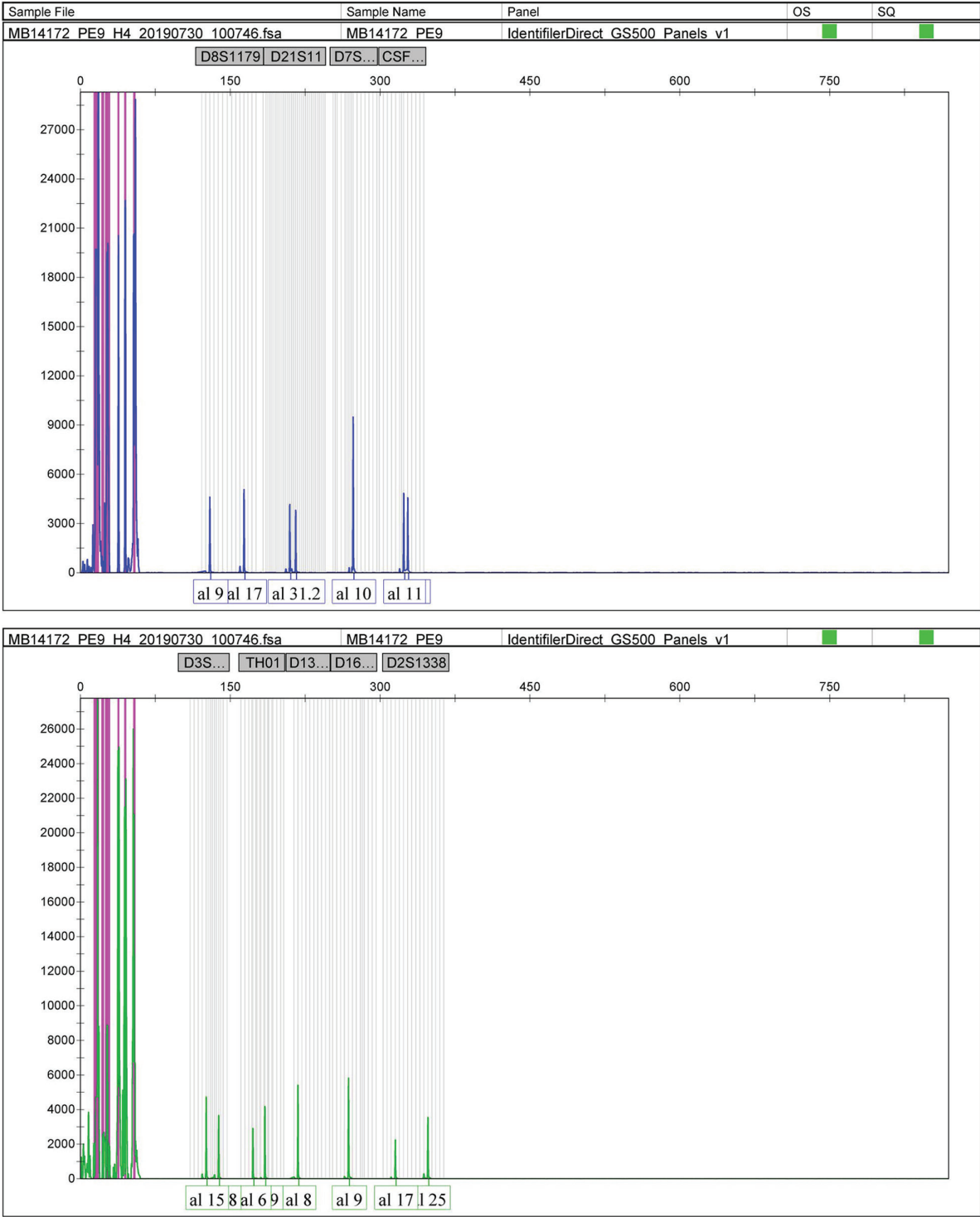


Figure 2. Continued. Short tandem repeat locus analysis of PE9 cell line, generated by Applied Biosystems (Thermo Fisher Scientific, Inc.).

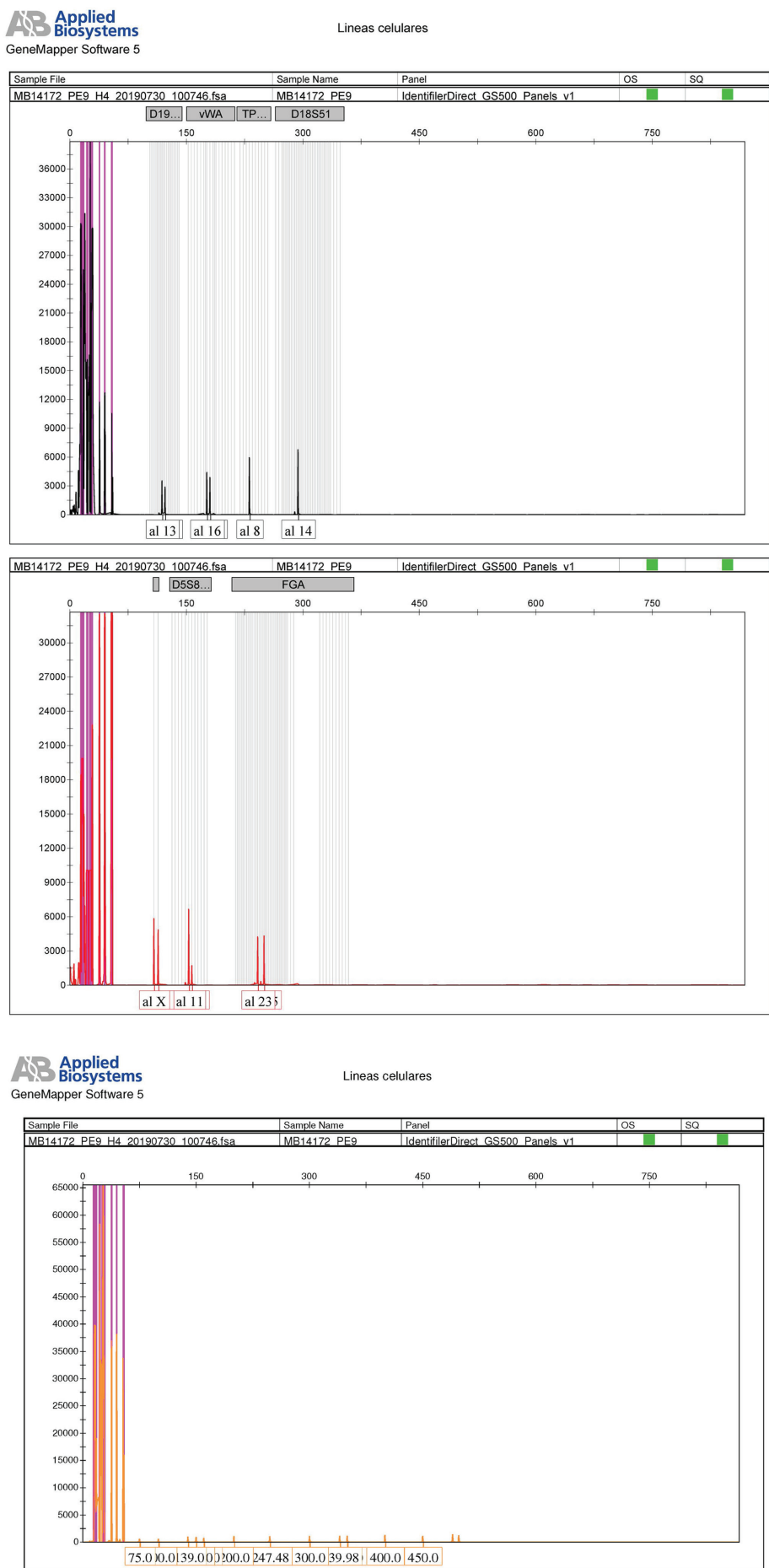


Figure S3. Synergism of combined drug treatment and temozolomide resistance. (A) Equation of the Chou-Talalay CI. Representation of drug combination points in a typical Fa-CI chart. Compusyn can be used to generate CI prediction graphs and estimate a prediction of synergy behavior for other Fa values. CI values corresponding to a synergistic, antagonistic or additive result are indicated (46). (B) Acquisition of temozolomide resistance in A172 and LN405 cell lines. *P<0.05, ***P<0.001 vs. the sensitive cell line (Tukey's test). CI, combination index; Fa, affected fraction.

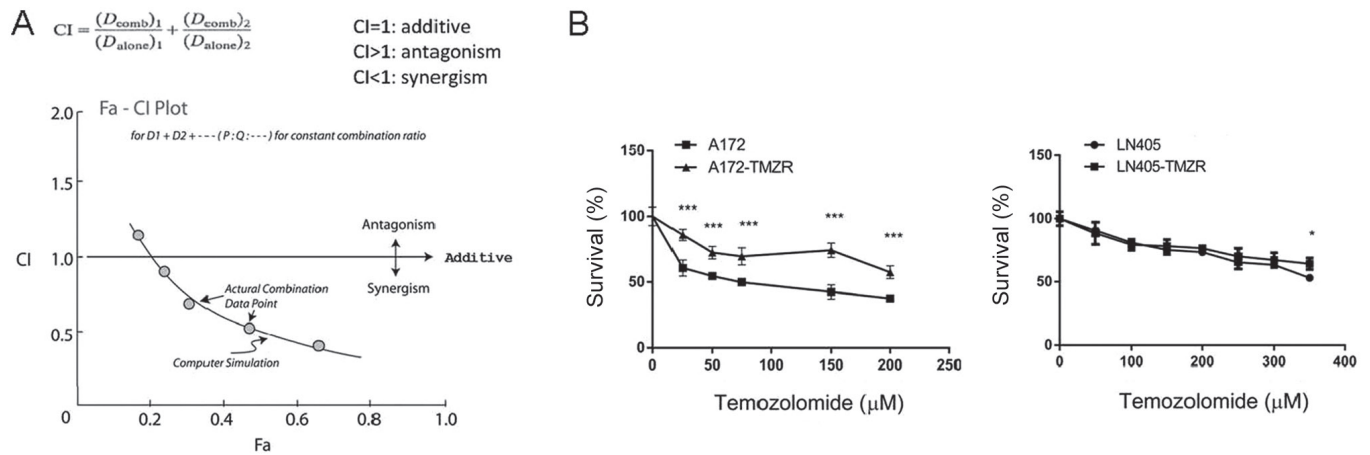


Figure S4. CI indices expressed in logarithmic scale for the DZ-Nep + panobinostat treatment combination. When expressed in logarithmic terms, the graph reflects synergy at $\text{LogCI} < 0$ and antagonism at $\text{LogCI} > 0$. Each point represents the average of three independent experiments. The Fa axis reflects the Fa produced by the different combinations of drugs used at different concentrations. CI, combination index; DZ-Nep, 3-deazaneplanocin A; Fa, affected fraction; D72P72, simultaneous treatment with DZ-Nep and panobinostat for 72 h; D24P48, pre-treatment with DZ-Nep for 24 h followed by post-treatment with panobinostat for 48 h; P24D48, pre-treatment with panobinostat for 24 h followed by post-treatment with DZ-Nep for 48 h.

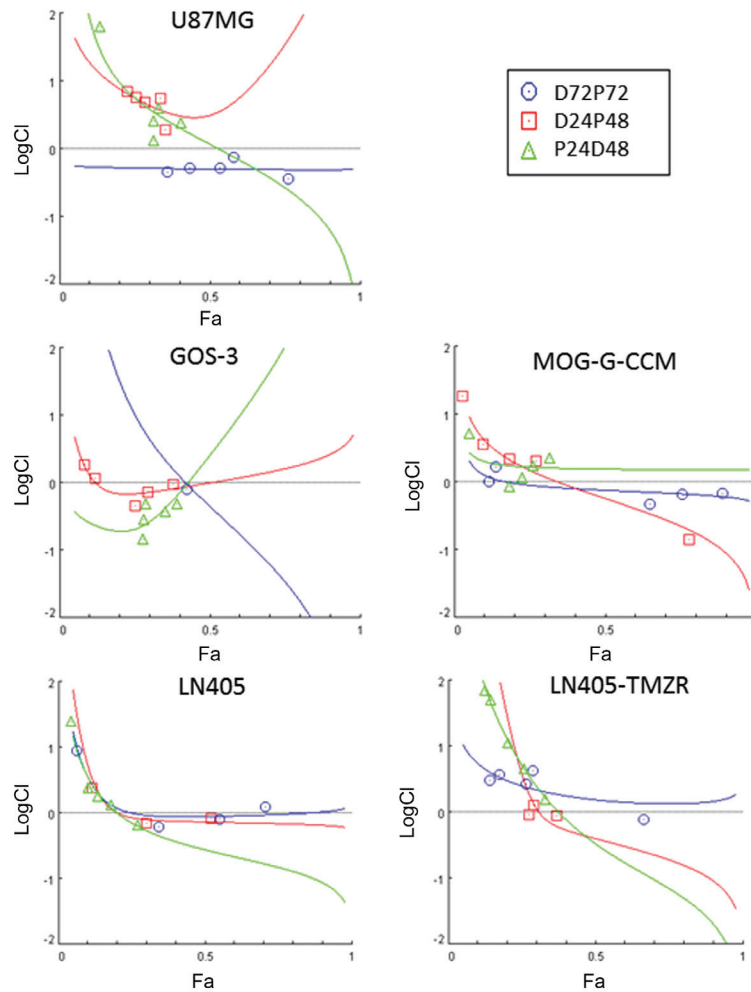


Figure S5. Clonogenic assay in soft agar. DZ-Nep, 3-deazaneplanocin A; PAN, panobinostat; TMZ, temozolomide; D+P, DZ-Nep + panobinostat; D+T, DZ-Nep + temozolomide; P+T, panobinostat + temozolomide.

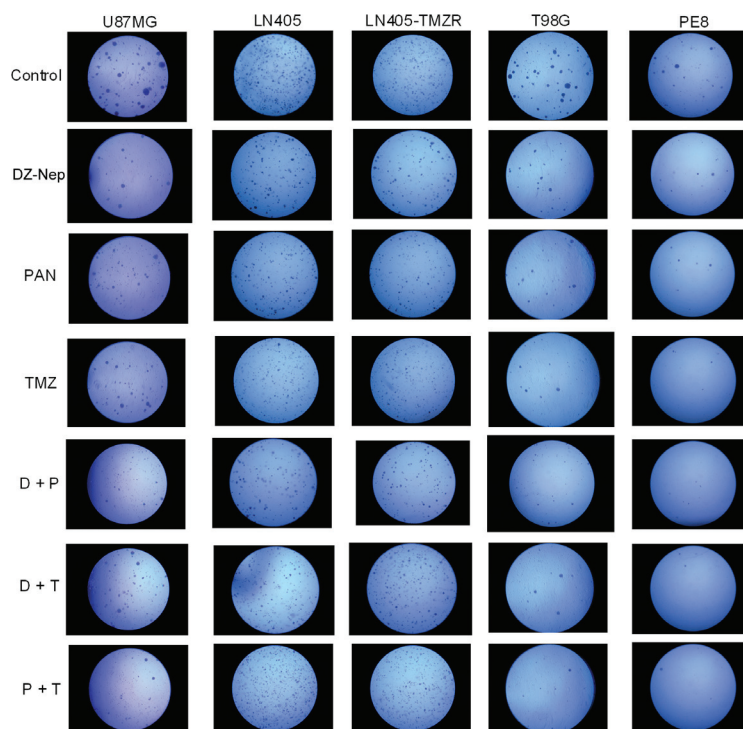


Figure S6. CI indices expressed in logarithmic scale for the DZ-Nep + temozolomide treatment combination. When expressed in logarithmic terms, the graph reflects synergy at $\text{LogCI} < 0$ and antagonism at $\text{LogCI} > 0$. Each point represents the average of three independent experiments. The Fa axis reflects the Fa produced by the different combinations of drugs used at different concentrations. CI, combination index; DZ-Nep, 3-deazaneplanocin A; Fa, affected fraction; D72T72, simultaneous treatment with DZ-Nep and temozolomide for 72 h; D24T48, pre-treatment with DZ-Nep for 24 h followed by post-treatment with temozolomide for 48 h; T24D48, pre-treatment with temozolomide for 24 h followed by post-treatment with DZ-Nep for 48 h.

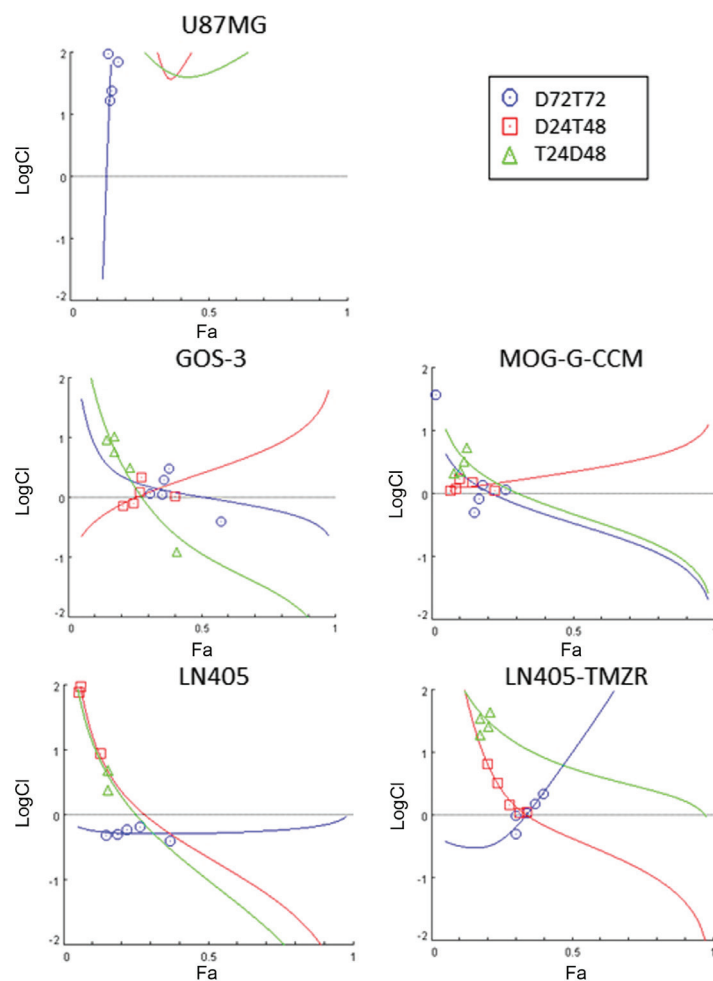


Figure S7. CI indices expressed in logarithmic scale for the panobinostat + temozolomide treatment combination. When expressed in logarithmic terms, the graph reflects synergy at $\text{LogCI} < 0$ and antagonism at $\text{LogCI} > 0$. Each point represents the average of three independent experiments. The Fa axis reflects the Fa produced by the different combinations of drugs used at different concentrations. CI, combination index; Fa, affected fraction; P72T72, simultaneous treatment with panobinostat and temozolomide for 72 h; P24T48, pre-treatment with panobinostat for 24 h followed by post-treatment with temozolomide for 48 h; T24P48, pre-treatment with temozolomide for 24 h followed by post-treatment with panobinostat for 48 h.

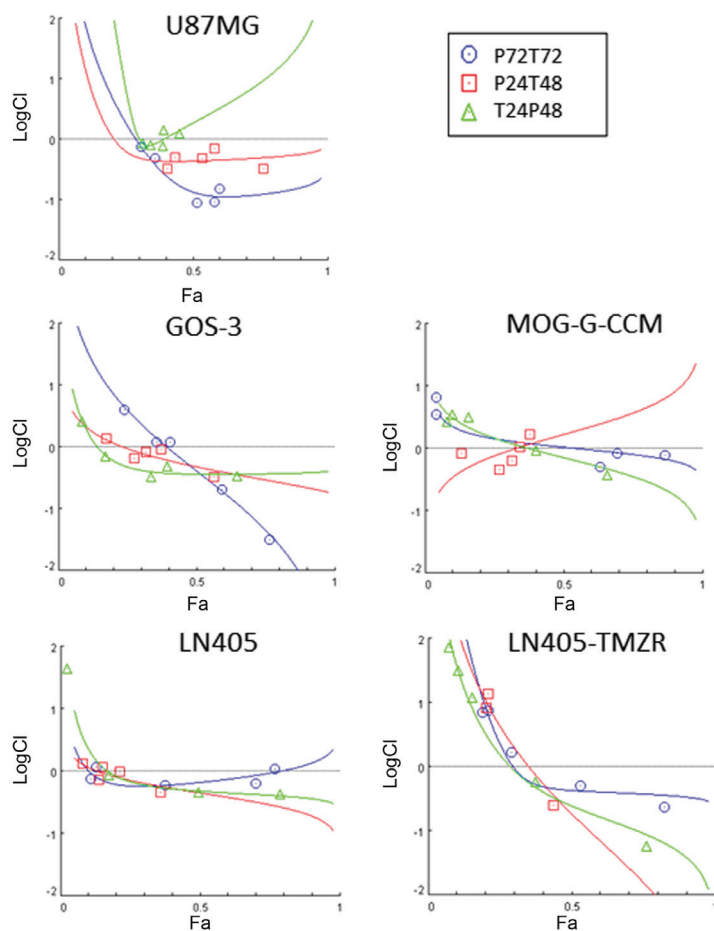


Figure S8. CI indices expressed in logarithmic scale for the panobinostat + DZ-Nep + temozolomide combined treatment. When expressed in logarithmic terms, the graph reflects synergy at $\text{LogCI} < 0$ and antagonism at $\text{LogCI} > 0$. Each point represents the average of three independent experiments. The Fa axis reflects the Fa produced by the different combinations of drugs used at different concentrations. DZ-Nep, 3-deazaneplanocin A; PAN, panobinostat; TMZ, temozolomide.

