

Figure S1. (A) Immunohistochemical staining of S100A8 in a representative sample of lymph node metastasis. (B) Correlation analysis of S100A8 expression levels (determined by ELISA) and numbers of neutrophils in cholangiocarcinoma tumor specimens. S100A8, S100 calcium-binding protein A8.

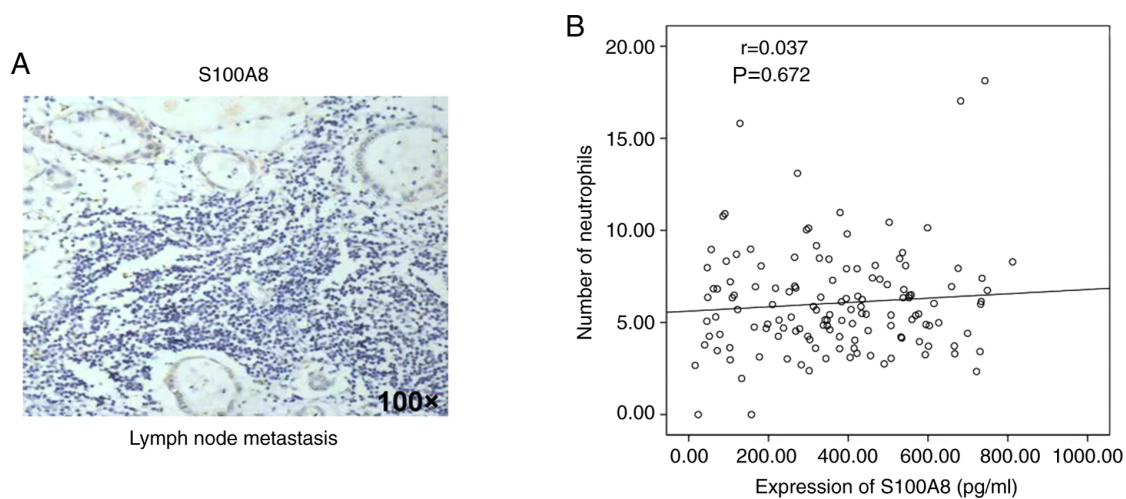


Figure S2. Transwell migration assay results. RBE tumor cells were added to the upper chamber of the Transwell inserts, and HUVECs were added in the lower chamber. HUVECs, human umbilical vein endothelial cells; S100A8, S100 calcium-binding protein A8; NC, negative control; OE, overexpression.

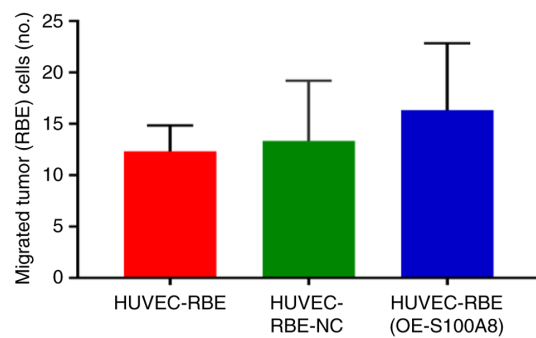


Figure S3. Immunohistochemical staining of VEGF in a representative sample of intrahepatic metastasis. VEGF, vascular endothelial growth factor.

