

Figure S1. Study design. A total of 139 patients with HCC were enrolled. During the study, 19 patients were excluded, and data from 120 patients with HCC were analyzed. HCC, hepatocellular carcinoma; PS, performance status; BCLC, Barcelona Clinic Liver Cancer.

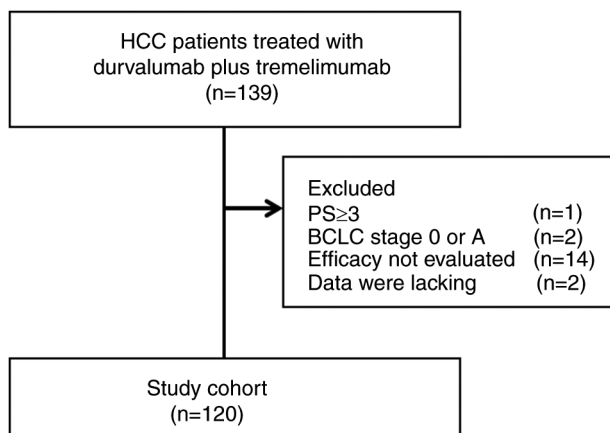


Figure S2. Change in ALBI score at 4, 8 and 12 weeks from baseline during Dur/Tre treatment. ALBI, albumin-bilirubin; Dur/Tre, durvalumab plus tremelimumab.

