

Figure S1. Receiver operator characteristic curve analysis of SIRI based on CSS. the optimal cut-off value was determined as 1.95. CSS, cancer-specific survival; AUC, area under the curve; CI, confidence interval.

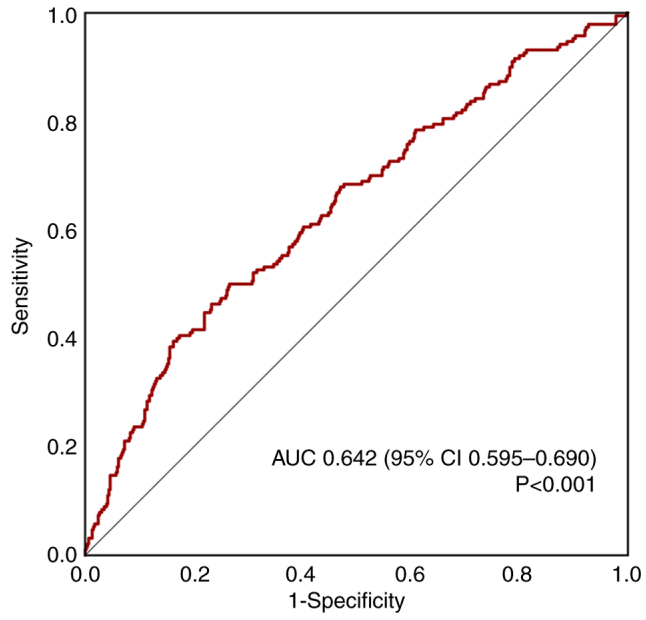


Figure S2. Kaplan-Meier survival curve analysis based on tumor multifocality. (A) Overall survival, (B) cancer-specific survival and (C) recurrence-free survival. RNU, radical nephroureterectomy.

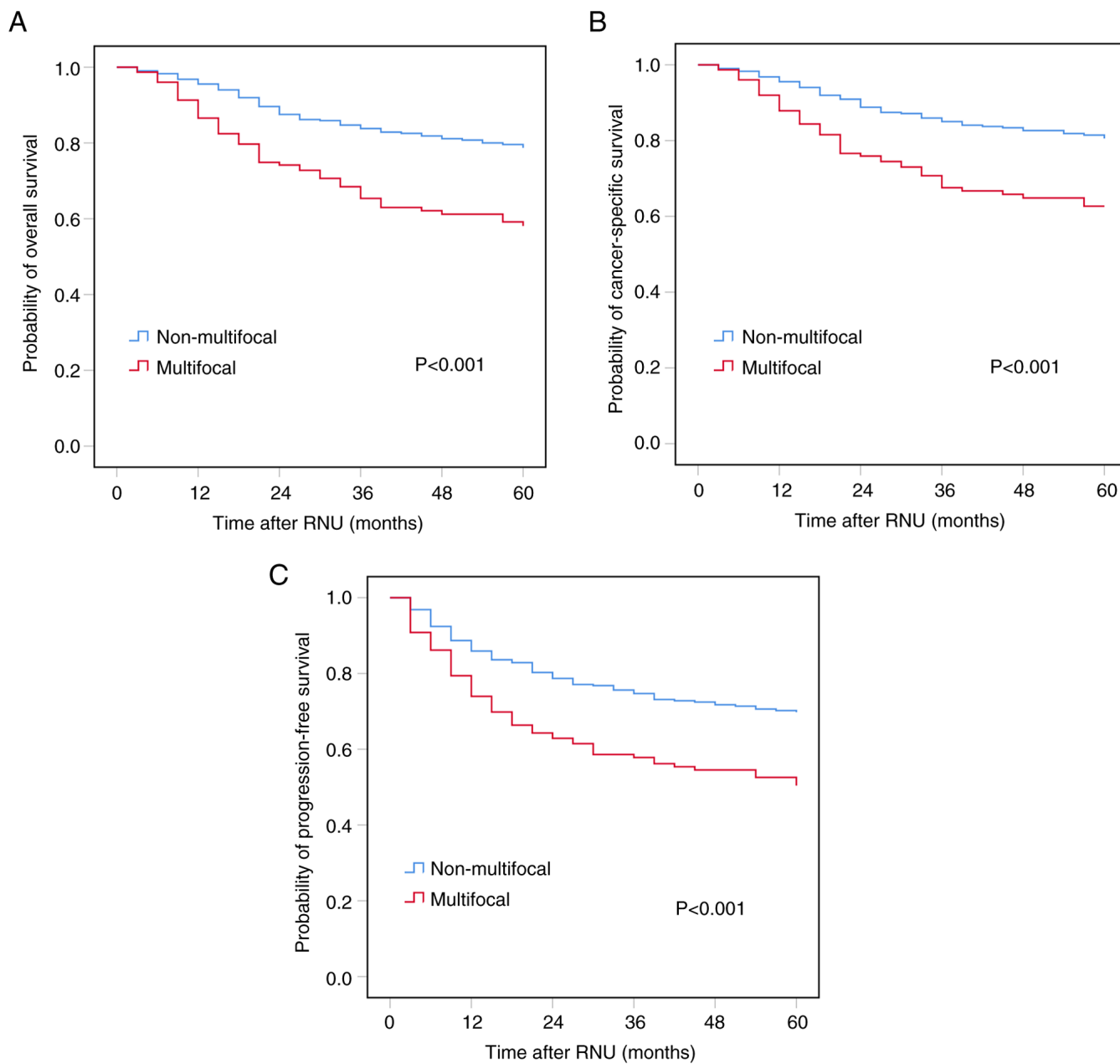


Figure S3. Predictive ability of cancer-specific death between the WBC, ANC and SIRI using receiver operating characteristic curves. ANC, absolute neutrophil count; AUC, area under the curve; CI, confidence interval; SIRI, systemic inflammation response index; WBC, white blood cell count.

