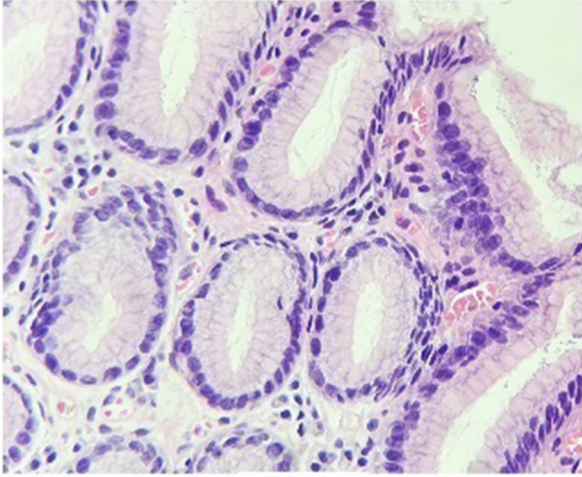
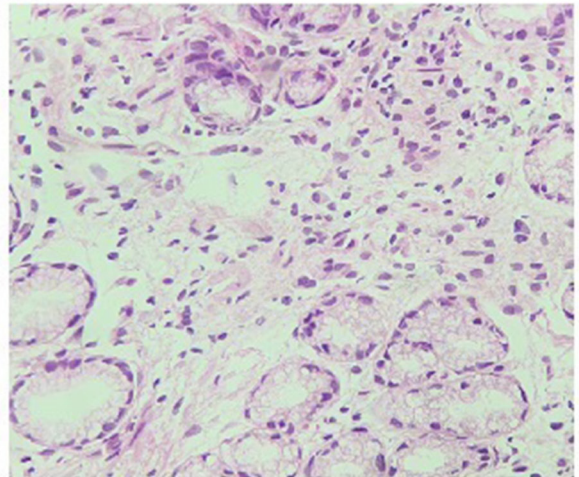


Figure S1. Histopathological hematoxylin and eosin staining images of gastric mucosa (magnification, 40x). (A) Chronic non-atrophic gastritis. (B) Atrophic gastritis. (C) Intestinal metaplasia. (D) Diffuse-type gastric cancer. (E) Mucinous adenocarcinoma. (F) Papillary adenocarcinoma.

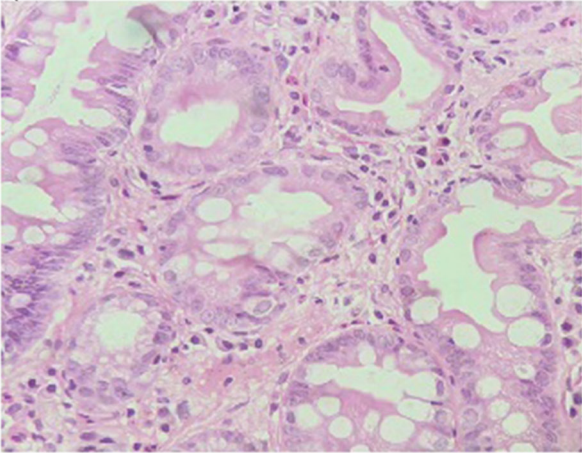
A



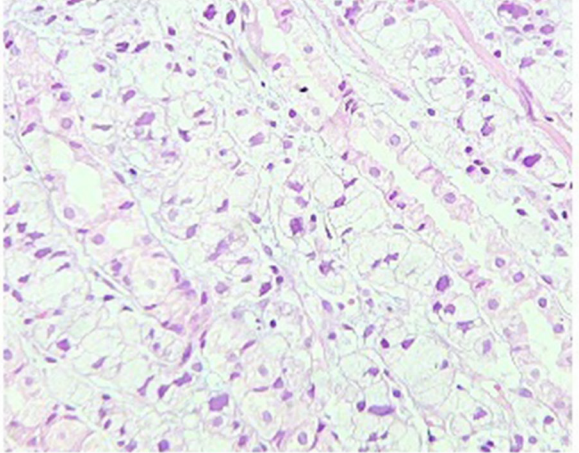
B



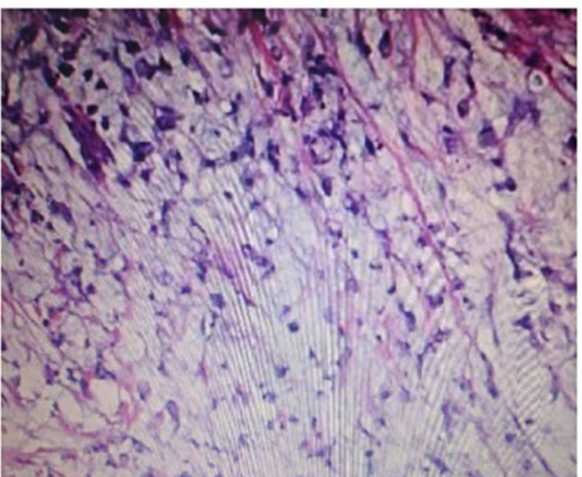
C



D



E



F

