

Figure S1. TMA and representative tissue core images. (A) TMA arrangement diagram. (B) Monochrome image of the TMA without fluorescence. (C) TMA stained with H&E. (D) Composite images of all fluorophores and the corresponding H&E images of representative tumor cores and tumor-adjacent normal cores in the TMA (original magnification, x20). TMA, tissue microarray; H&E, hematoxylin and eosin; mIF, multiplex immunofluorescence.

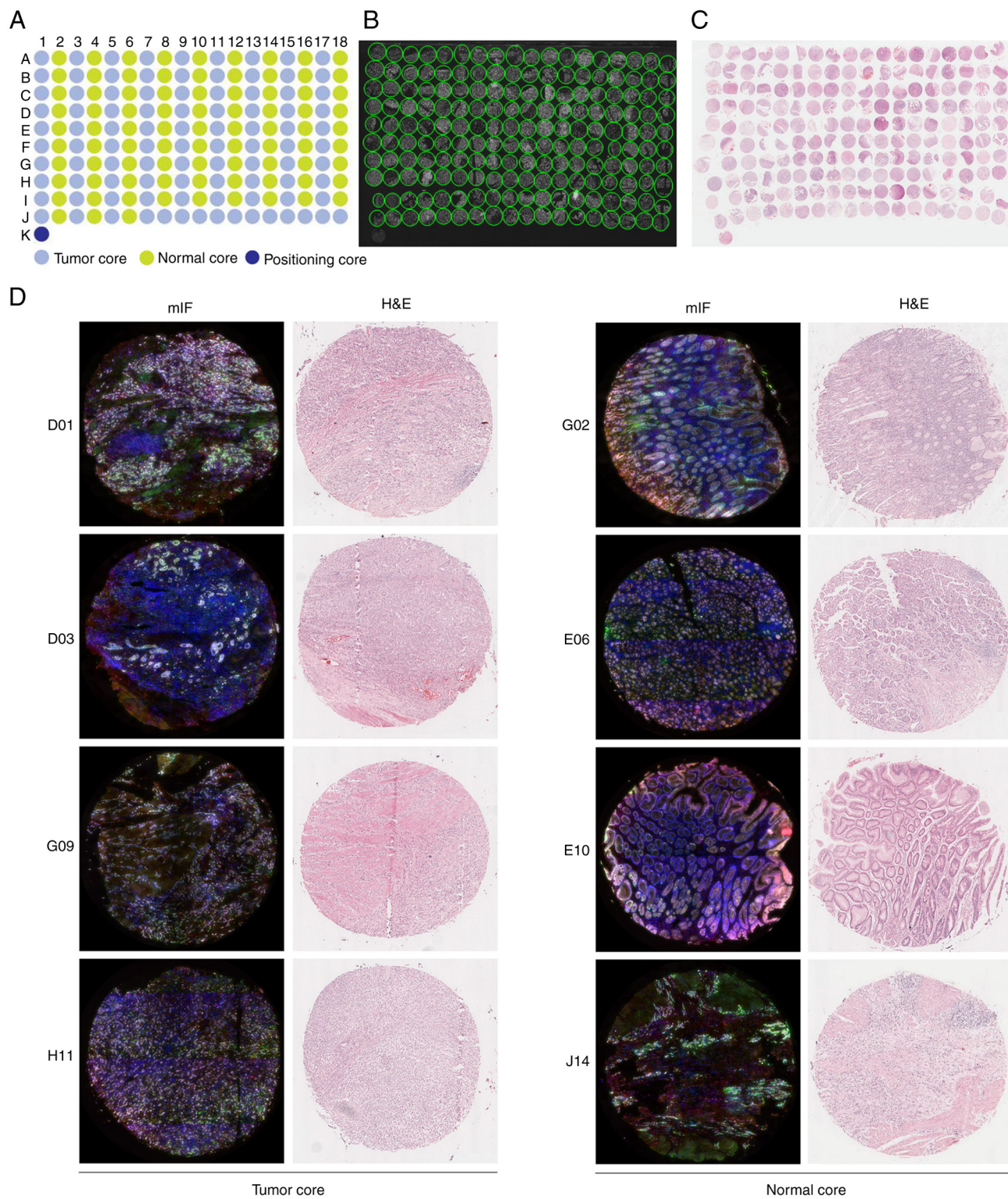


Figure S2. ROC curves of the density of CD44v9⁺, TIM3⁺ and CD44v9⁺/TIM3⁺ cells for gastric cancer diagnosis. ROC curves for the (A) total and (B) CK⁺ regions. CD44v9, cluster-of-differentiation gene 44 variant isoform 9; TIM3, T cell immunoglobulin and mucin domain-containing protein 3; CK, cytokeratin; ROC, receiver operating characteristic.

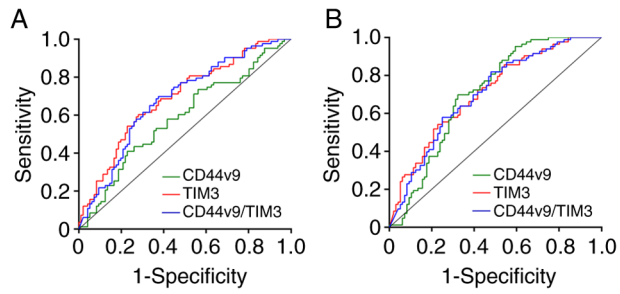


Figure S3. Overall survival of patients with gastric cancer with high and low expression of TIM3 and CD44v9/TIM3 in tumor tissues. Kaplan-Meier plots of overall survival in patients with gastric cancer with high and low densities of cells expressing TIM3 in the (A) total, (B) CK⁺ and (C) CK⁻ regions of tumor tissues. Kaplan-Meier plots of overall survival in patients with gastric cancer with high and low densities of cells expressing CD44v9/TIM3 in the (D) total, (E) CK⁺ and (F) CK⁻ regions of tumor tissues.

