

Figure S1. RNA transcript levels of the NFKBI family in the MERAV database. Transcriptional level of (A) NFKBIA, (B) NFKBIB, (C) NFKBID and (D) NFKBIZ in MERAV. NFKBI, nuclear factor of κ light polypeptide gene enhancer in B-cells inhibitor; MERAV, Metabolic Gene Rapid Visualizer.

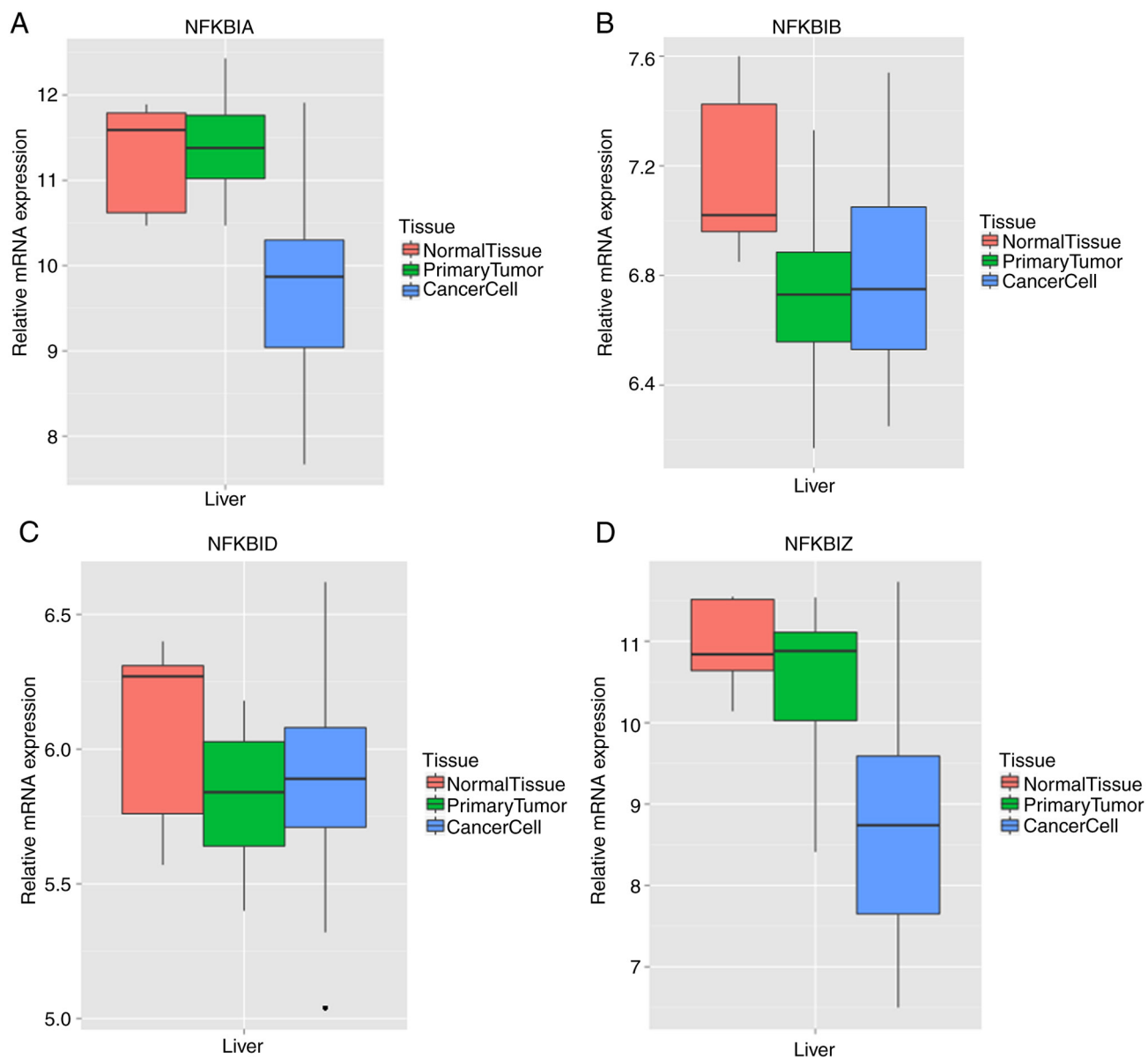


Figure S2. Prognostic impact of immune cell infiltration and expression of NFKBIE. (A) Low NFKBIE expression in conjunction with High T cell CD4+ effector memory had a favourable prognosis. (B) Patients with low NFKBIE and macrophage expression had a better prognosis. (C) A combination of low NFKBIE expression and high common lymphoid progenitor expression had the better prognosis. (D) Low NFKBIE expression in conjunction with high CD4+ Th2 cell expression was associated with a better prognosis. NFKBIE, nuclear factor of κ light polypeptide gene enhancer in B-cells inhibitor, ϵ ; HR, hazard ratio.

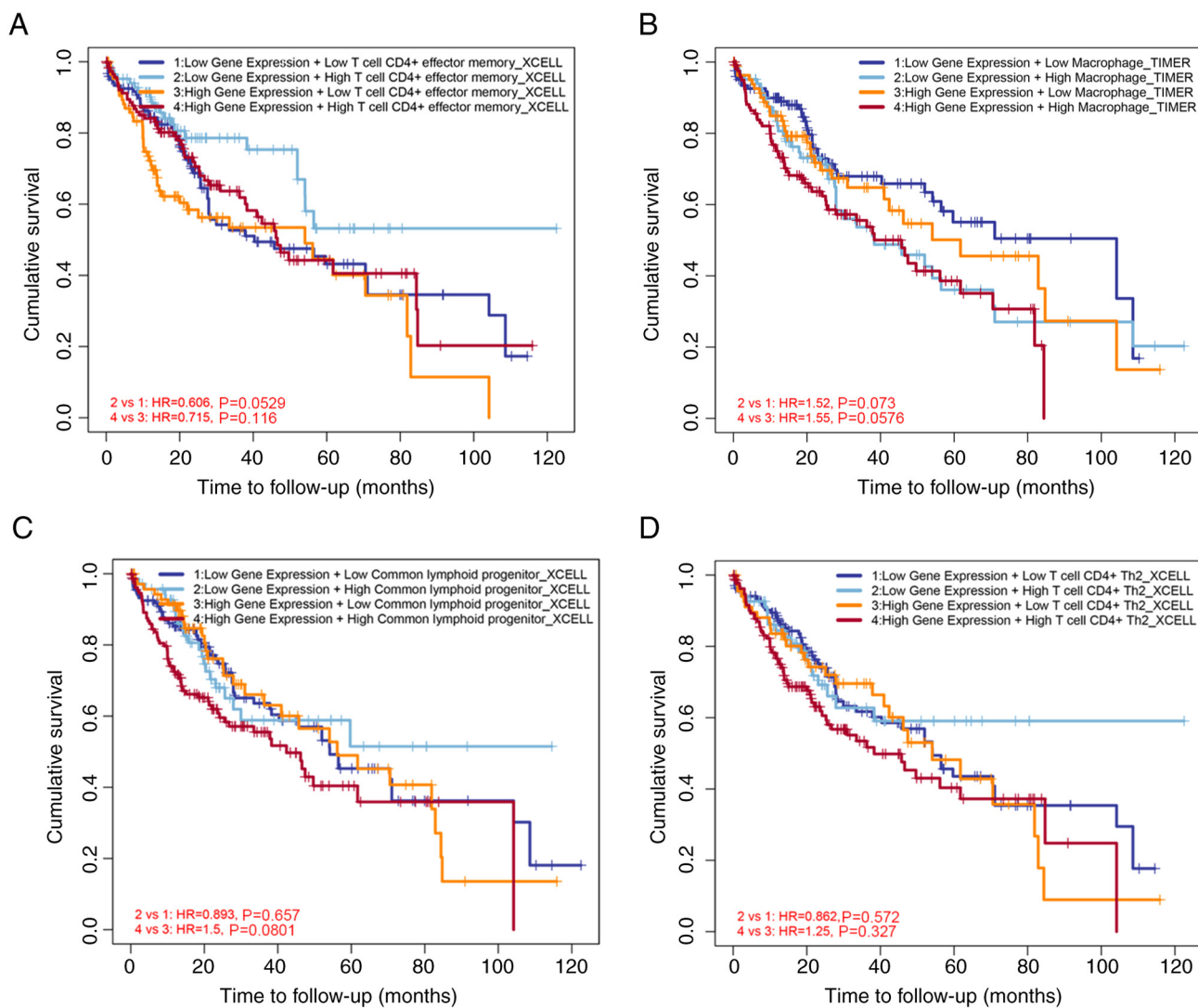


Figure S3. Images captured after immunohistochemical staining of 80 pairs of hepatocellular carcinoma and normal liver tissues using nuclear factor of κ light polypeptide gene enhancer in B-cells inhibitor, ϵ antibodies.

