

Figure S1. Kaplan-Meier curves of survival rates in RCC patients with bone metastasis according to Memorial Sloan-Kettering Cancer Center scores. In RCC patients with bone metastasis, there was no significant difference in prognosis by total point scores ($P=0.11$, log-rank). RCC, renal cell carcinoma.

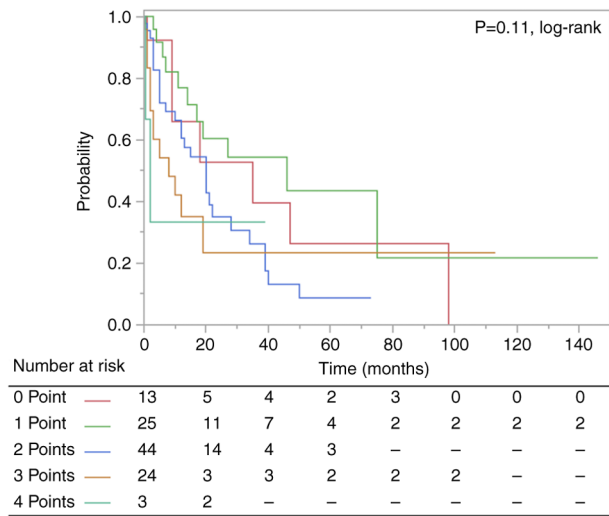
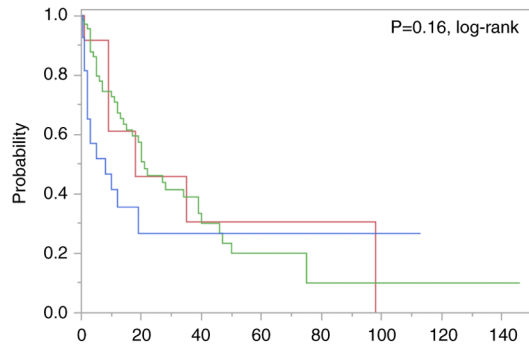


Figure S2. Kaplan-Meier curves of survival rates in RCC patients with bone metastasis according to Memorial Sloan-Kettering Cancer Center scores of 0 (favorable), 1-2 (intermediate), and ≥ 3 (unfavorable). In RCC patients with bone metastasis, prognosis prediction by MSKCC scores was inadequate. RCC, renal cell carcinoma.



		Time (months)							
Number at risk		0	20	40	60	80	100	120	140
Favorable	—	12	4	3	2	2	0	0	0
Intermediate	—	70	26	10	6	2	2	2	2
Unfavorable	—	27	4	3	2	2	2	—	—