

Figure S1. FISH, immunohistochemistry and RNAScope performed on patient tissue samples. Representative images of the FISH staining of the long (green) and short arm (red) of the Y chromosome in patient tumor samples with (A) Y chromosome staining present and (B) Y chromosome loss. Representative images of the (C) immunohistochemical and (D) RNAScope staining of HK2 in the same patient tumor sample. Scale bar, 50 μ m. FISH, fluorescence *in situ* hybridization; HK2, hexokinase 2.

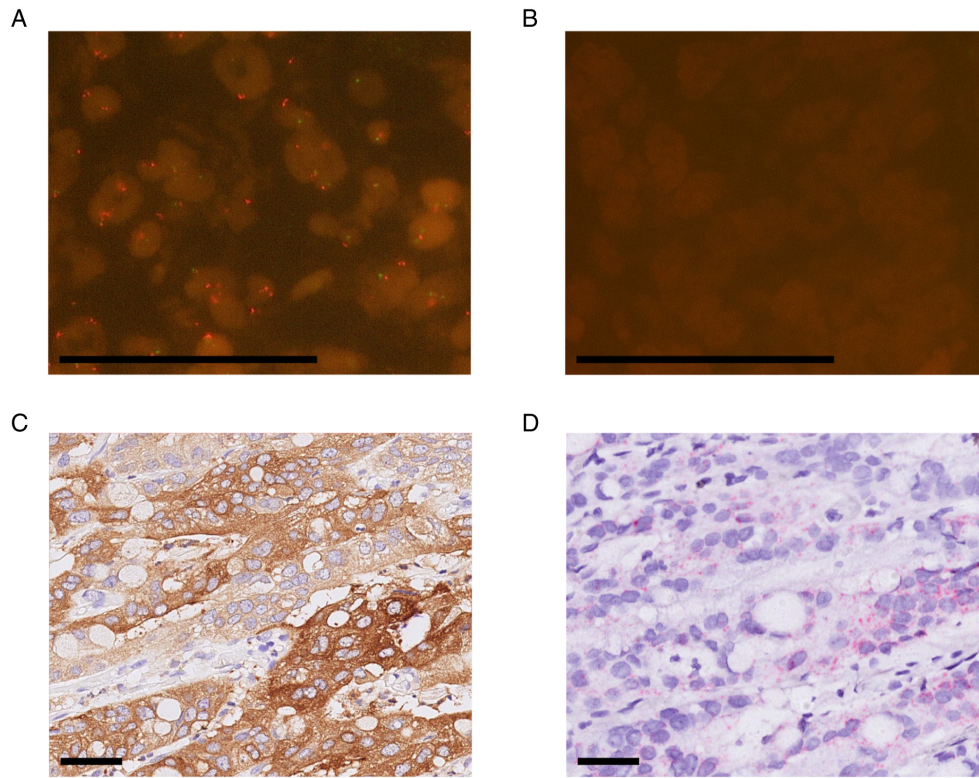


Figure S2. Survival analyses of subgroups. Kaplan-Meier curves for overall survival classified by HK2 expression levels in (A) non-smokers (low, n=65; high, n=53; P=0.239), (B) smokers (low, n=88; high, n=96; P=0.252), (C) patients without alcohol consumption (low, n=91; high, n=90; P=0.504) and (D) patients with alcohol consumption (low, n=30; high, n=26; P=0.889).

