

Figure S1. Immunofluorescence cell staining for Lgr5. HCT116 cells transfected with HaloTag-fused Lgr5-expressing plasmids were stained with anti-Lgr5 antibodies from the indicated vendors. HaloTag was stained with anti-HaloTag antibodies. No significant correlation between the distribution of Lgr5 staining and HaloTag staining was obtained for any of the anti-Lgr5 antibodies tested.

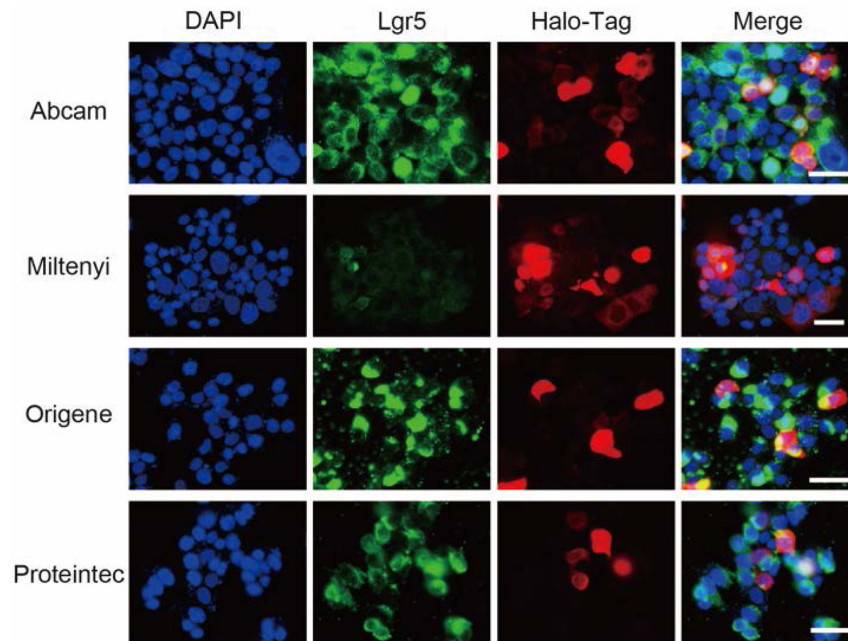


Table SI. CTC numbers and cfDNA concentrations in patient blood around SEMS placement for obstructive colorectal cancer. Actual CTC numbers and cfDNA concentrations presented. Patient numbers correspond to those listed in Table II. Pre, before SEMS placement; POD1 and POD4, 24 h and 4 days after SEMS placement, respectively; CTC, circulating tumor cells; cfDNA, cell-free DNA; SEMS, self-expanding stents.

Patient no.	Number of CTCs cfDNA concentration (ng/ml)		
	Pre	POD1	POD2
1	0	9	6
	9.8	10.3	11.3
2	1	1	3
	10.9	10.8	10.0
3	0	0	0
	10.0	10.3	11.7
4	3	6	2
	11.2	10.8	11.6
5	1	3	0
	10.0	15.0	14.4
6	2	1	2
	16.0	13.2	16.1