

Figure S1. Representative immunohistochemistry images showing HER2 expression in tumor tissue (magnification x10).

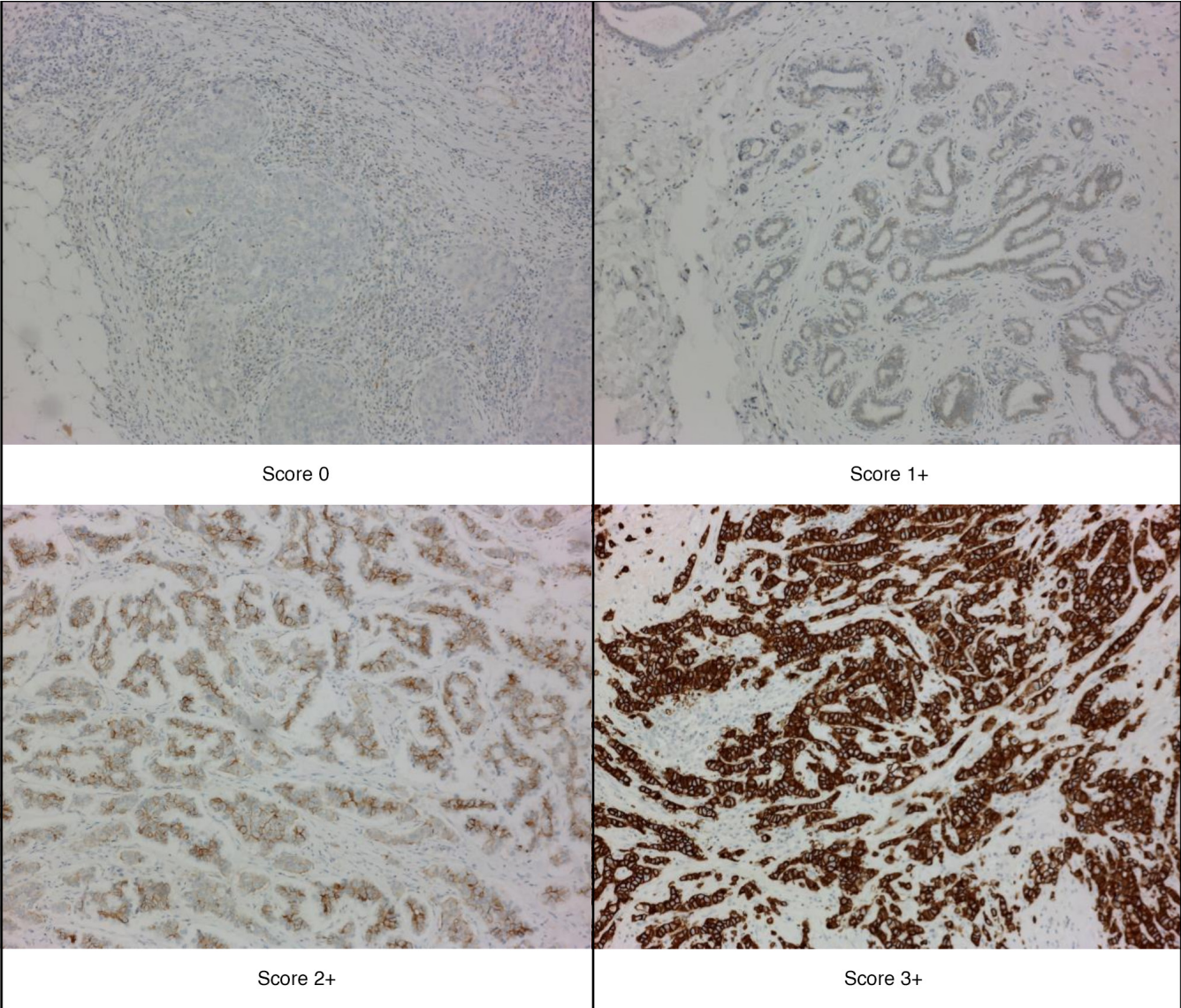


Figure S2. Representative silver *in situ* hybridization images showing HER2 gene status in tumor tissue. The HER2 gene signal is seen as black dots (black arrows) and the centromere of chromosome 17 signal as red dots (red arrows) slightly larger than the silver black dots.

