

Figure S1. mRNA expression levels of GOLPH3 in cells with GOLPH3 knockdown or OE were examined by reverse transcription-quantitative PCR. Data are presented as the mean \pm SD (n=3). **P<0.01, ***P<0.001. GOLPH3, Golgi phosphoprotein 3; NC, negative control; OE, overexpression; sh, short hairpin.

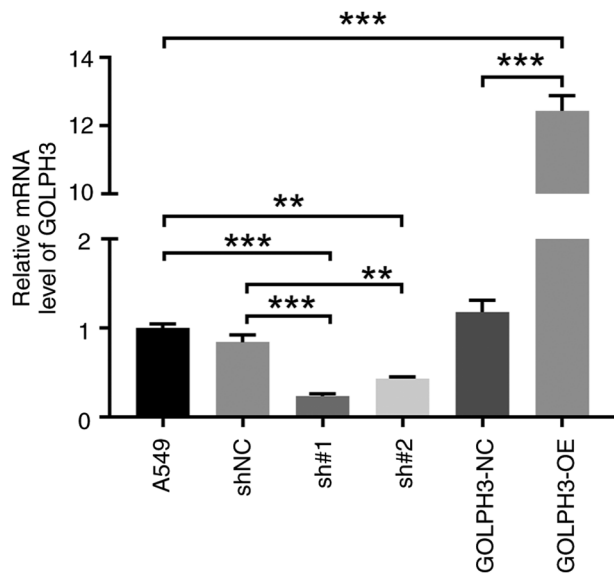


Figure S2. Cell viability was suppressed by cisplatin in A549 and A549-Cis cells. Data are presented as the mean \pm SD (n=3). ***P<0.001. A549-Cis, A549-cisplatin resistant.

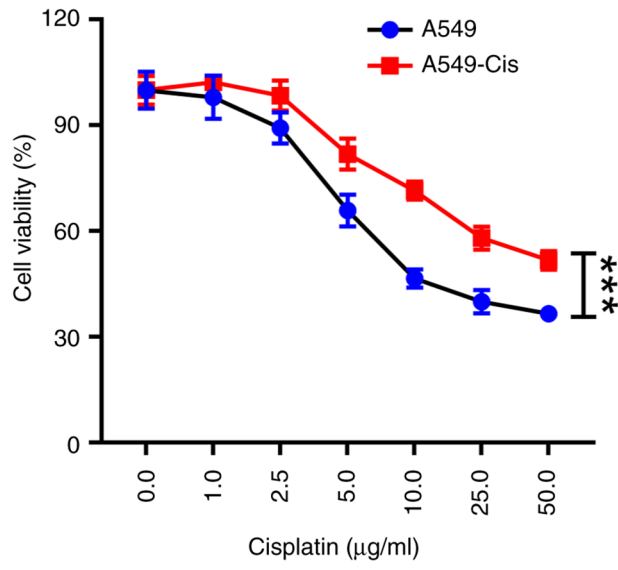


Figure S3. Representative plots of flow cytometric analysis of cell cycle progression in cells infected with shNC, sh1, sh2, GOLPH3-NC and GOLPH3-OE without cisplatin treatment. GOLPH3, Golgi phosphoprotein 3; NC, negative control; sh, short hairpin.

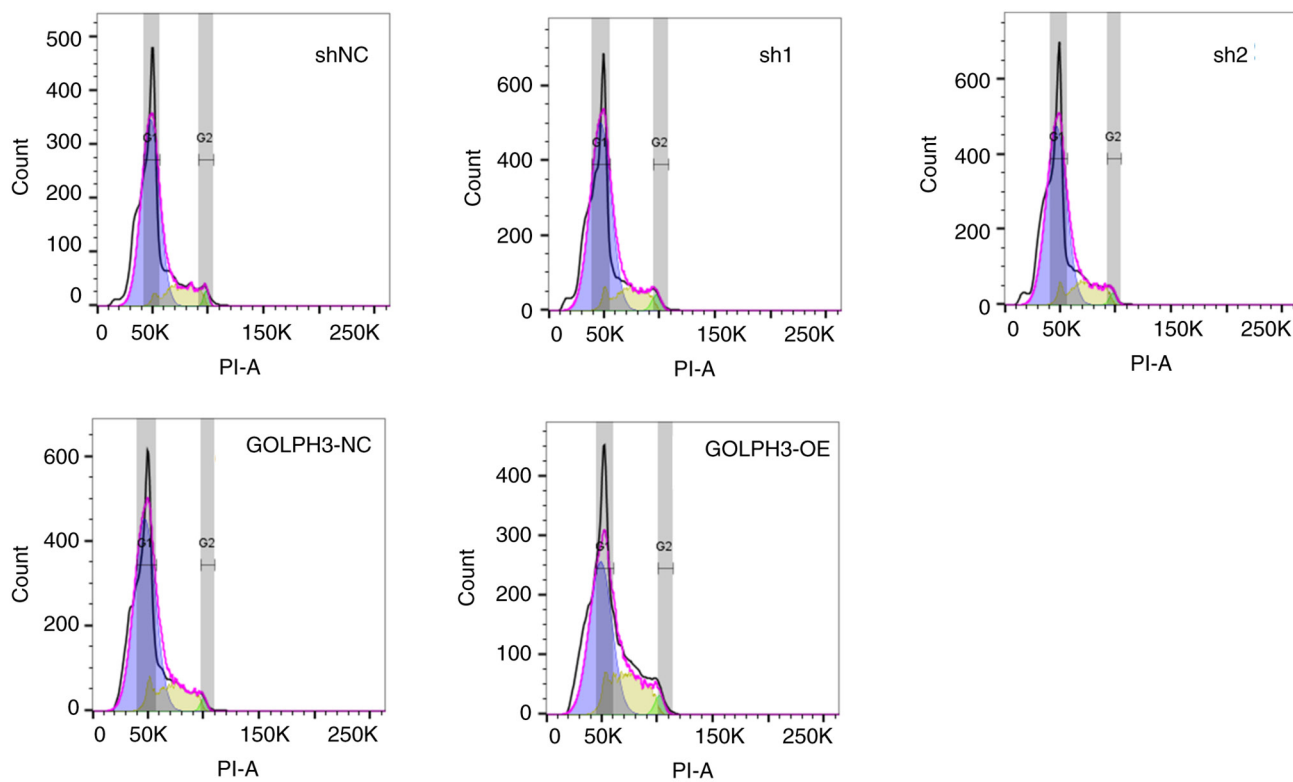


Figure S4. Relative GSH levels in A549 and A549-Cis cells. Data are presented as the mean \pm SD (n=3). ***P<0.001 vs. A549. A549-Cis, A549-cisplatin resistant; GSH, glutathione.

