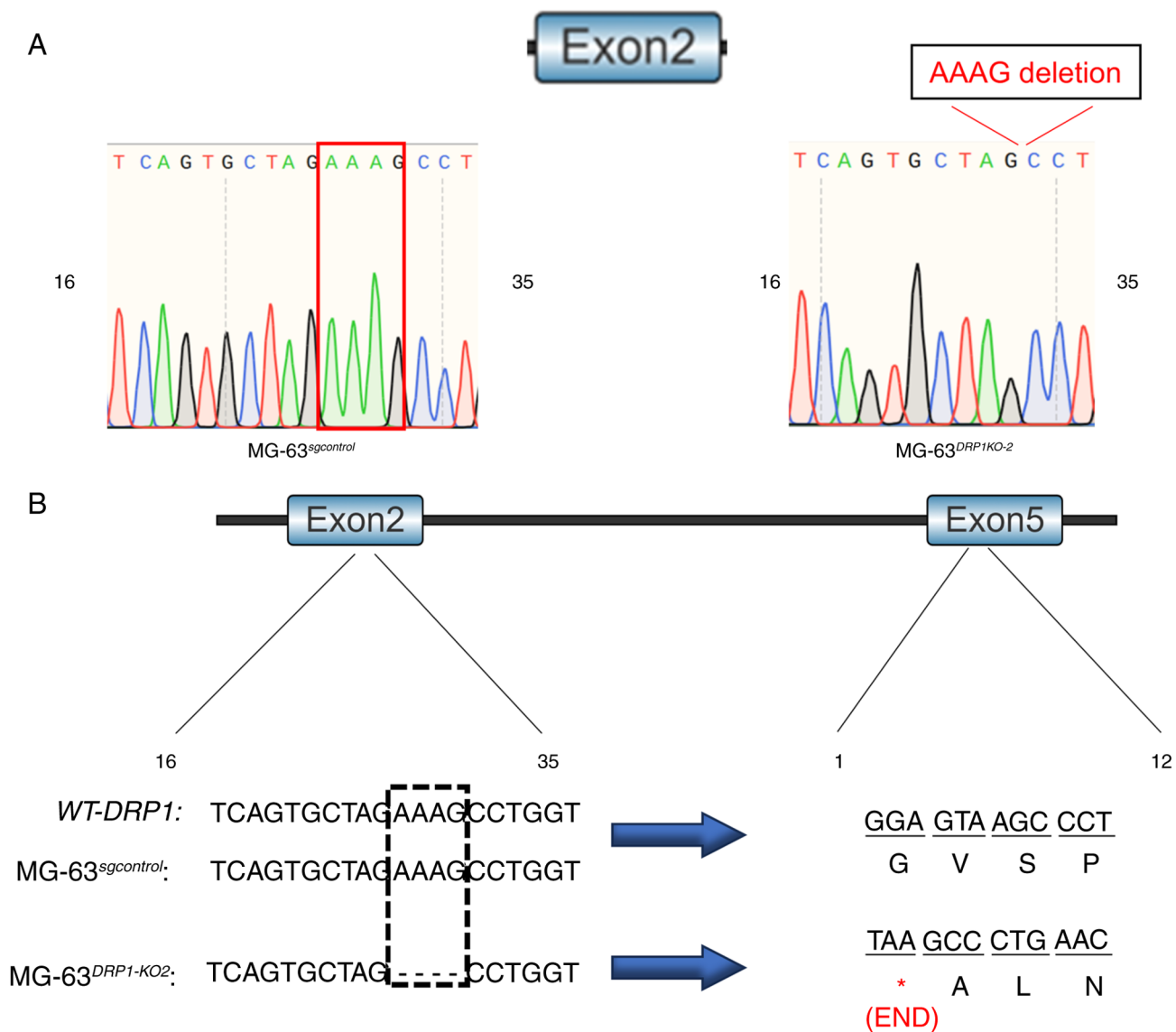


Figure S1. Characterization of the OSCs^{DRP1-KO2} knockout and 4-Base pair deletion in DRP1. (A) Sequencing results of the OSCs^{DRP1-KO2} knockout site, showing the 4-base pair deletion in exon 2 of the *DRP1* gene, leading to a frameshift. (B) Schematic representation of the OSCs^{DRP1-KO2} mutation, illustrating the deletion site in exon 2 and its resulting premature stop codon in exon 5.



Video S1. Original mitochondrial images of an individual non-OSC obtained by Multi-SIM z-stack labeling with PK Mito Red (scale bar, 5 μm). OSCs, osteosarcoma stem cells; Multi-SIM, multimodality structured illumination microscopy.

Video S2. 3D reconstruction of an individual non-OSC using Imaris for 3D rendering (scale bar, 5 μm). OSCs, osteosarcoma stem cells.

Video S3. Original mitochondrial images of an individual OSC obtained by Multi-SIM z-stack labeling with PK Mito Red (scale bar, 5 μm). OSCs, osteosarcoma stem cells; Multi-SIM, multimodality structured illumination microscopy.

Video S4. 3D reconstruction of an individual OSC using Imaris for 3D rendering (scale bar, 5 μm). OSCs, osteosarcoma stem cells.