

Figure S1. Generation and validation of the anti-CK2 α antibody. Sequential screening of mouse hybridoma clones was performed by western blotting. (A and B) More than six clones with high affinity and specificity to CK2 α both *in vitro* and *in vivo* that did not cross-react with CK2 α were selected. (C) The protein A-purified IgG fraction derived from a hybridoma clone 6A3, subclass mouse IgG2b κ , was used in the present study. CK2 α , casein kinase 2 alpha.

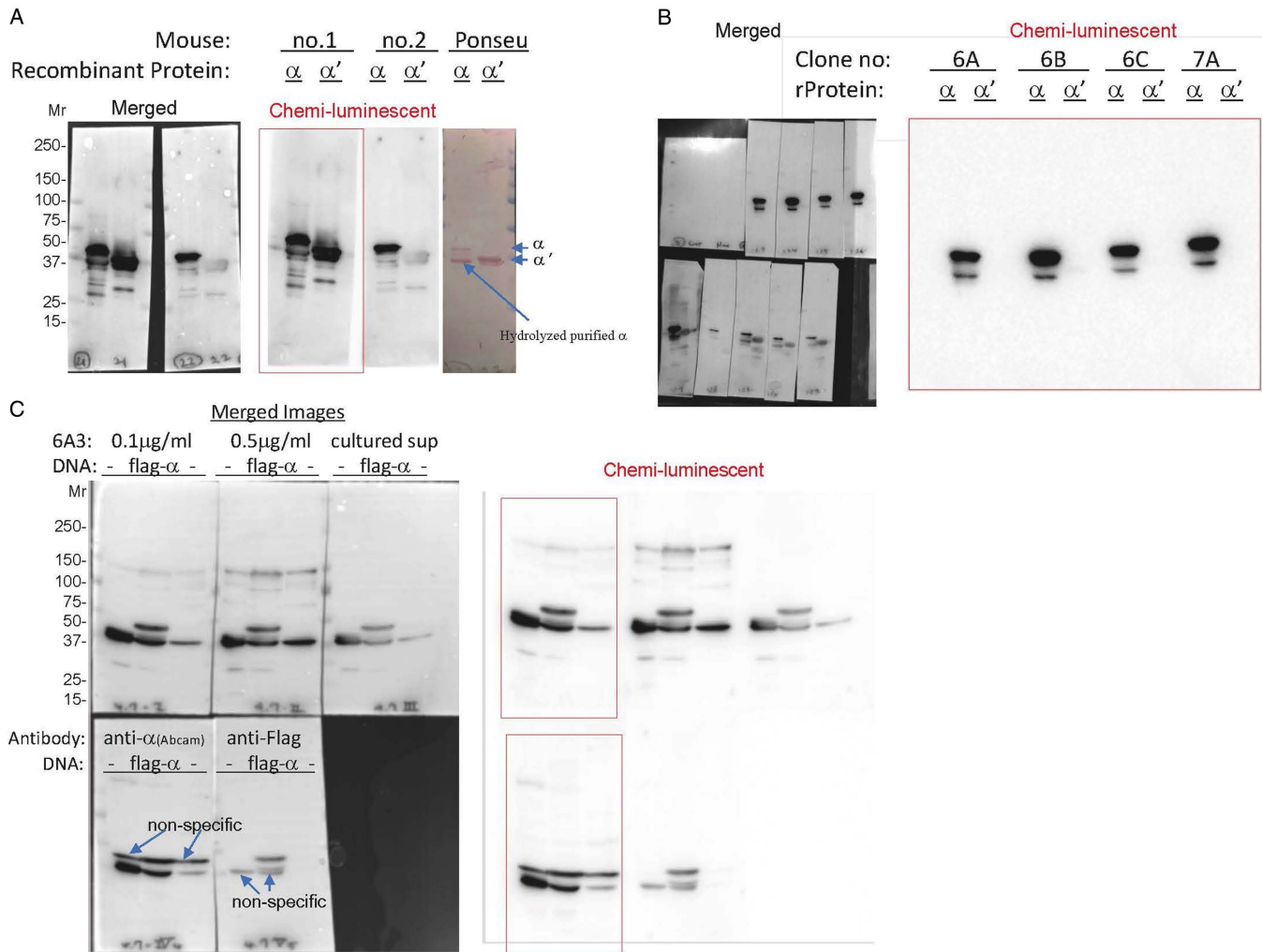
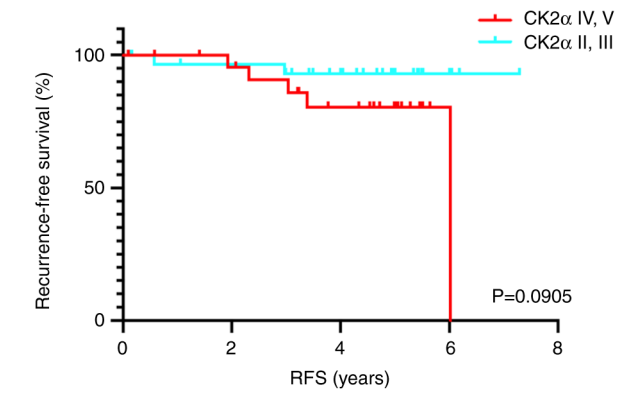


Figure S2. Nucleolar CK2 α staining is associated with poor prognosis in patients with surgically resected stage IA1 to IA2 lung adenocarcinoma. RFS was stratified by nucleolar CK2 α positive (IV, V) or negative (II, III) staining. Differences between categories were analyzed by the log-rank test. CK2 α , casein kinase 2 alpha; RFS, recurrence-free survival.



No. at risk		0	1	2	3	4	5	6	7	8
CK2 α II, III	31	29	28	26	22	12	5	2		
CK2 α IV, V	25	24	22	20	15	9	2	0		