

Figure S1. Estrogen receptor staining diagrams. (A) Negative. (B) 20%, +. (C) 50%, +. (D) 100%, +++. (E) 100%, ++.

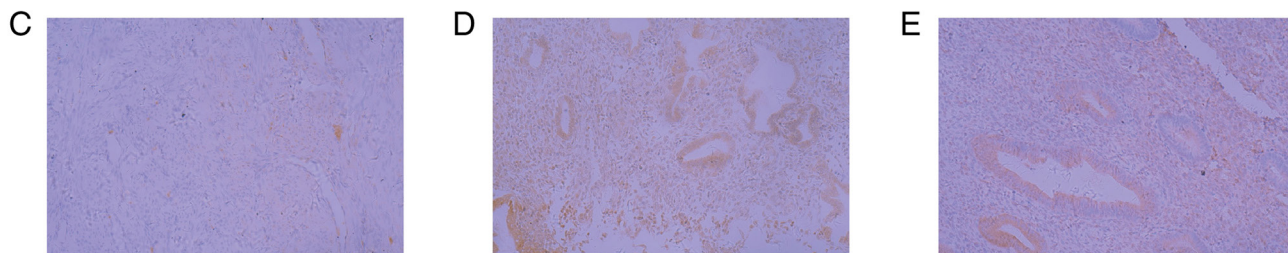
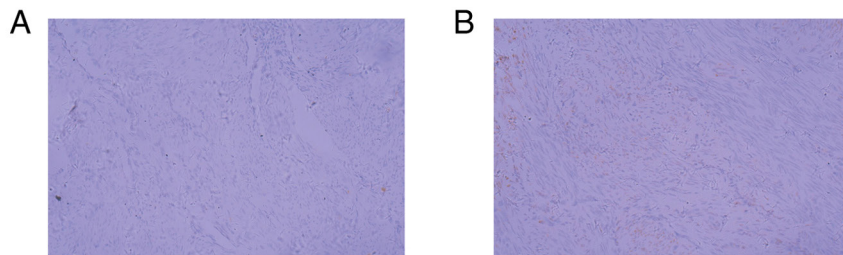


Figure S2. Progesterone receptor staining diagrams are demonstrated. (A) Negative. (B) 20%, ++. (C) 50%, +. (D) 100%, +++. (E) 100%, ++.

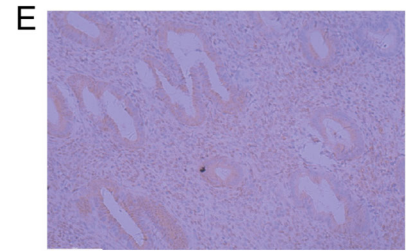
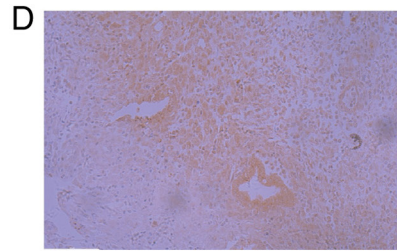
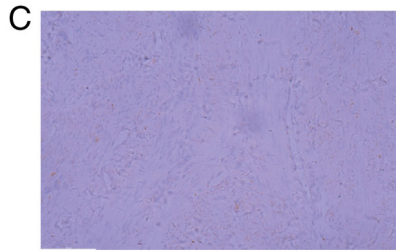
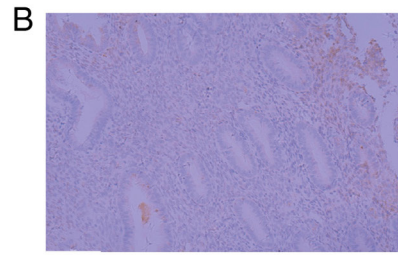
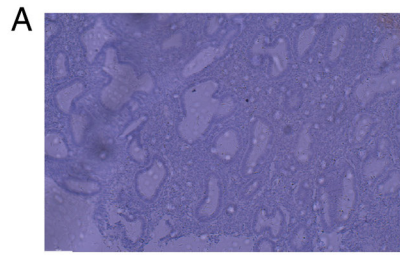


Figure S3. P53 staining diagrams are demonstrated. (A) Negative; (B) 20%, +. (C) 50%, +. (D) 100%, ++. (E) 100%, +++.

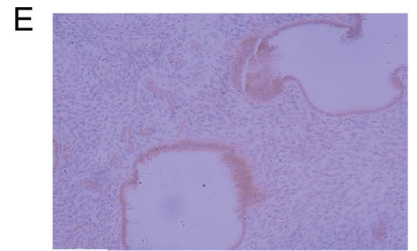
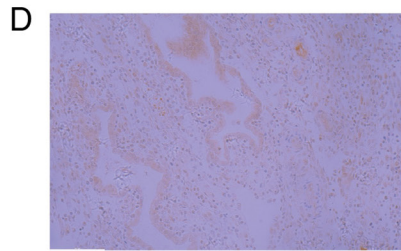
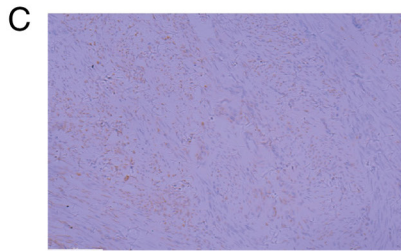
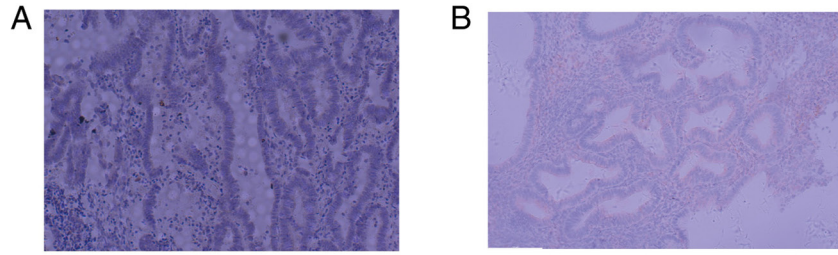


Figure S4. Ki67 staining diagrams. (A) Negative. (B) 20%, +. (C) 50%, +++. (D) 100%, ++. (E) 100%, +++.

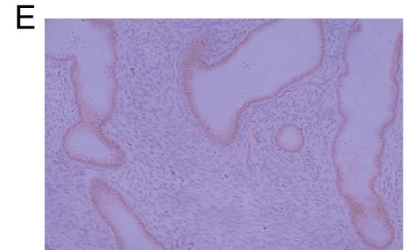
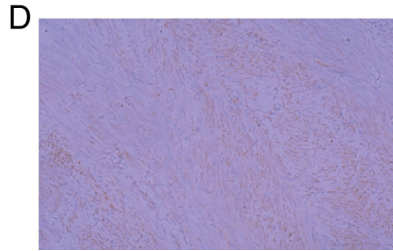
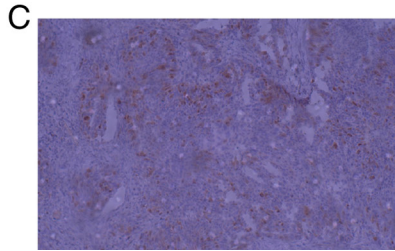
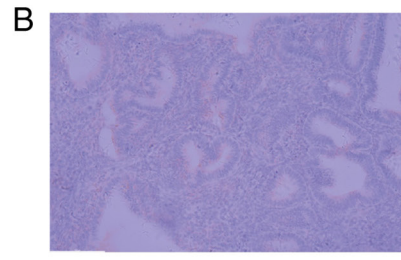
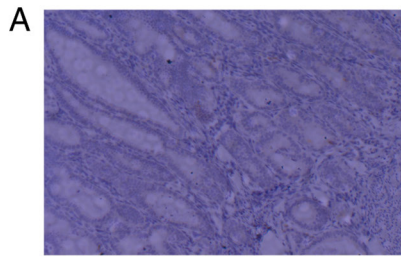


Figure S5. ROC curves of including four IHC factors and three IHC factors. (A) Four factors (including ER, PR, P53 and Ki67). (B) Three factors (including PR, P53 and Ki67). (C) Three factors (including ER, PR and P53). (D) Three factors (including ER, PR and Ki67). (E) Three factors (including ER, P53 and Ki67). ROC, receiver operating characteristic; ER, estrogen receptor; PR, progesterone receptor; Ki67, AUC, area under curve; IHC, immunohistochemical.

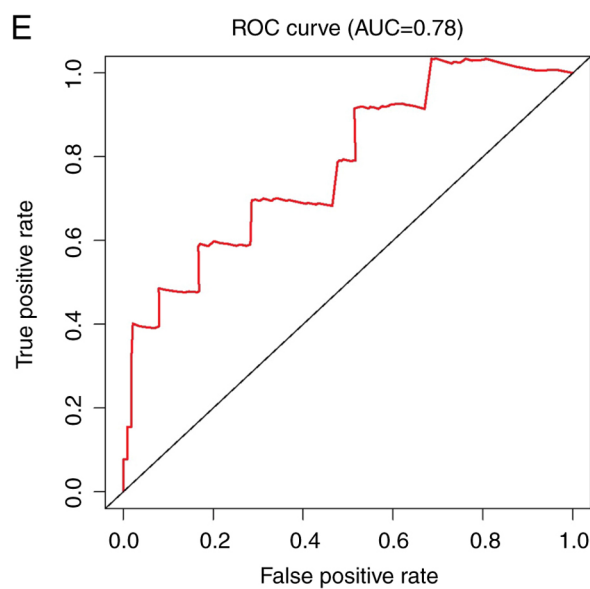
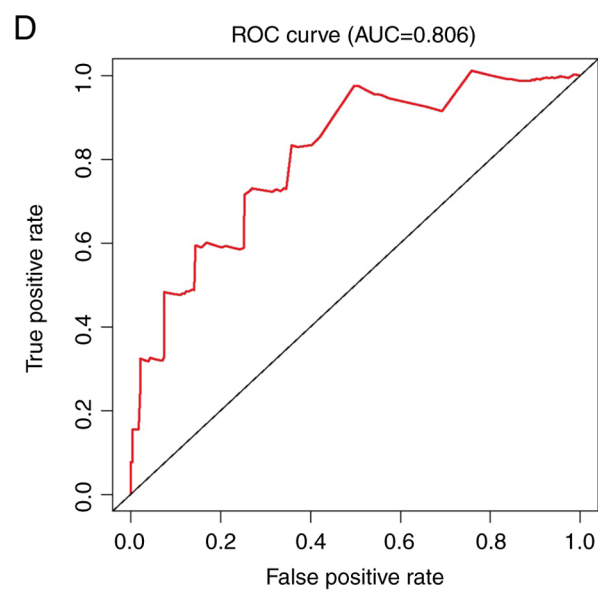
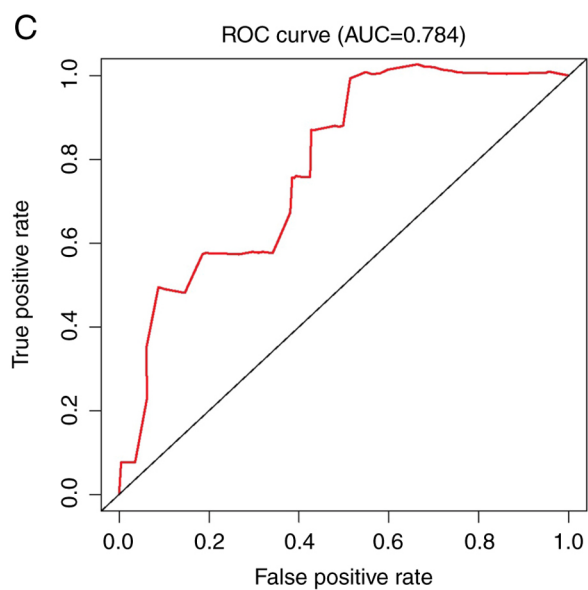
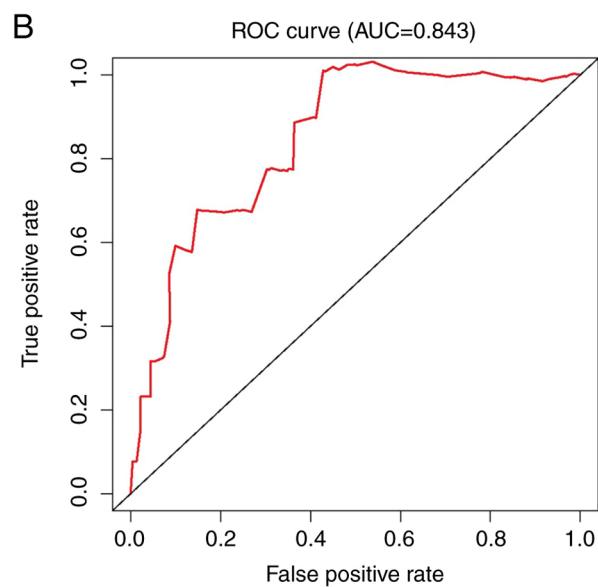
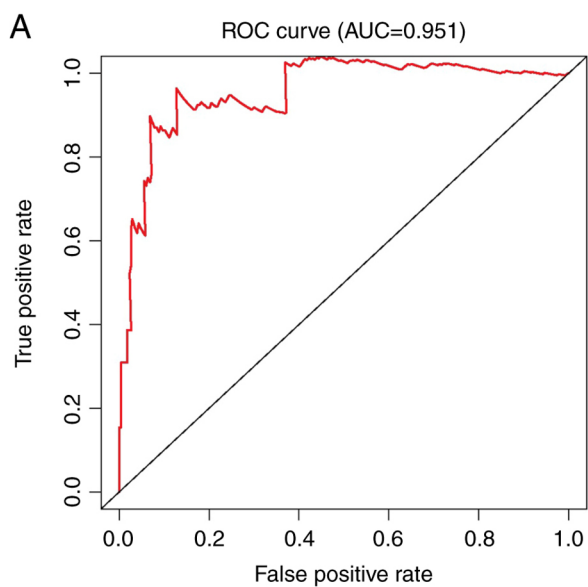


Figure S6. ROC curves of including two immunohistochemical factors. (A) Two factors (including ER and Ki67). (B) Two factors (including ER and P53). (C) Two factors (including P53 and Ki67). (D) Two factors (including PR and Ki67). (E) Two factors (including PR and P53). ROC, receiver operating characteristic; ER, estrogen receptor; PR, progesterone receptor; AUC, area under curve.

