

Figure S1. Appearance of *Bacillus cereus* colonies cultured on Trypticase Soy Agar M with 5% sheep blood.

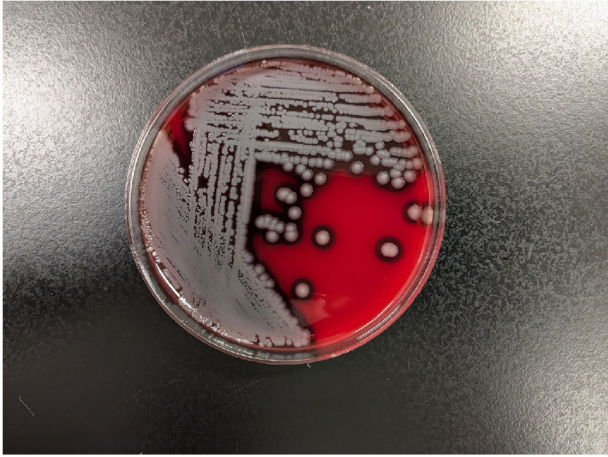


Figure S2. Receiver operating, characteristic curve for the diagnostic performance of the *Bacillus cereus* BSI score. The *B. cereus* BSI score had a sensitivity of 71.9% and specificity of 90.6% using a cut-off value of 5. BSI, bloodstream infection.

