

Figure S1. Kaplan-Meier curves representing the association between patient overall survival and BRD4 expression. Overall survival was analyzed using data from The Cancer Genome Atlas in (A) epithelial ovarian carcinoma and (B) endometrial endometrioid carcinoma using the Kaplan-Meier method. Statistical significance was determined using the log-rank test. BRD4, bromodomain 4.

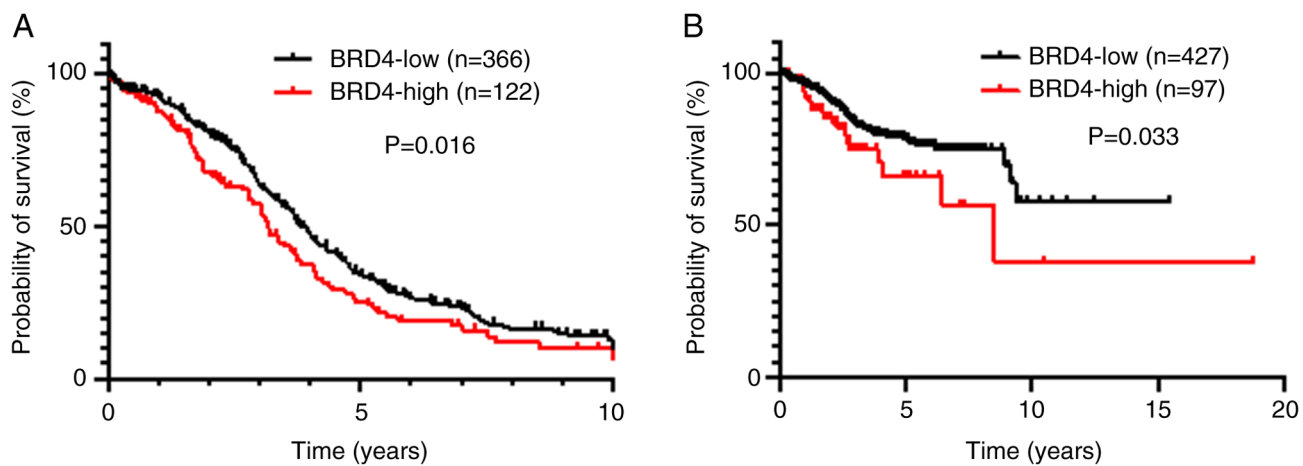


Figure S2. High dose of JQ1 treatment increases the apoptosis OVK18 cells. OVK18 cells were treated with 5 and 10 μ M of JQ1 for 72 h. Cleaved PARP protein levels were increased with 5 and 10 μ M of JQ1, which were not observed with 1 μ M. BRD4, bromodomain 4; PARP, poly ADP ribose polymerase.

