

Figure S1. Immunohistochemistry results. (A) Human Melanoma Black 45 was sporadically positive in certain regions and (B) CD34 displayed local positivity (magnification, x200).

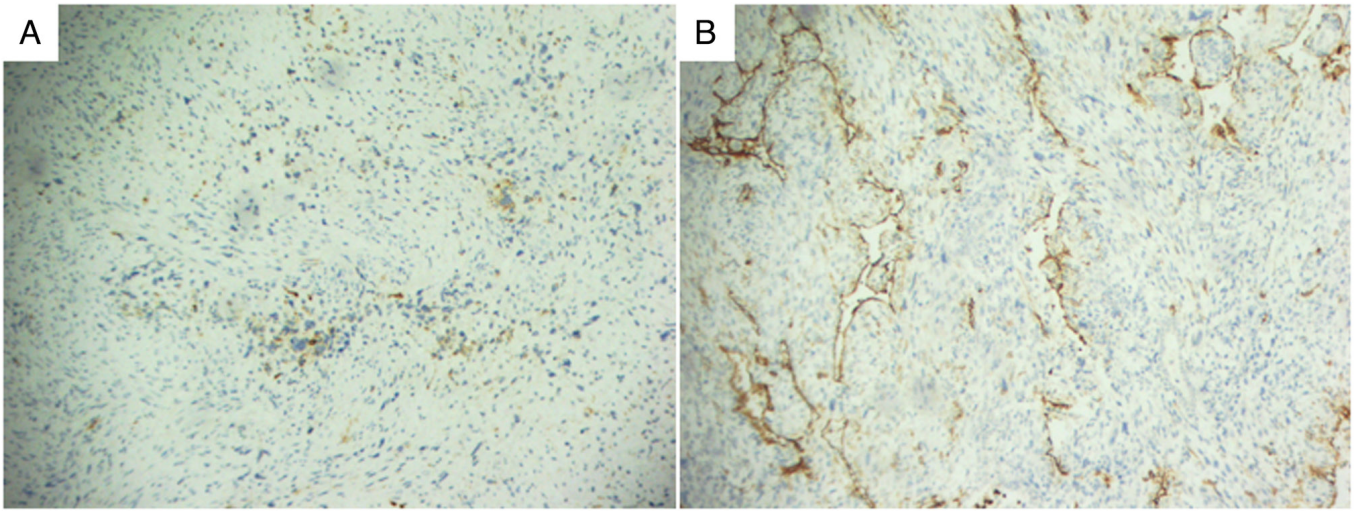


Figure S2. Immunohistochemistry results. (A) CK-Pan, (B) epithelial membrane antigen, (C) thyroid transcription factor-1 and (D) Catenin were positive in the mature epithelium entrapped within the tumor, and (E) signal transducer and activator of transcription 6, (F) anaplastic lymphoma kinase, (G) CD21, (H) Chromogranin A, (I) OCT3/4, (J) S-100 and (K) Synaptophysin were all negative (all magnification, x200).

