

Figure S1. Distribution of driver gene mutation and overall survival analysis stratified by EGFR mutation subtypes, ALK rearrangement and EGFR (-)/ALK (-). (A) The pie chart of NSCLCs with different oncogene mutations. (B) Survival curves for patients with advanced lung cancer according to oncogenic status. EGFR, epidermal growth factor receptor; ALK, anaplastic lymphoma kinase.

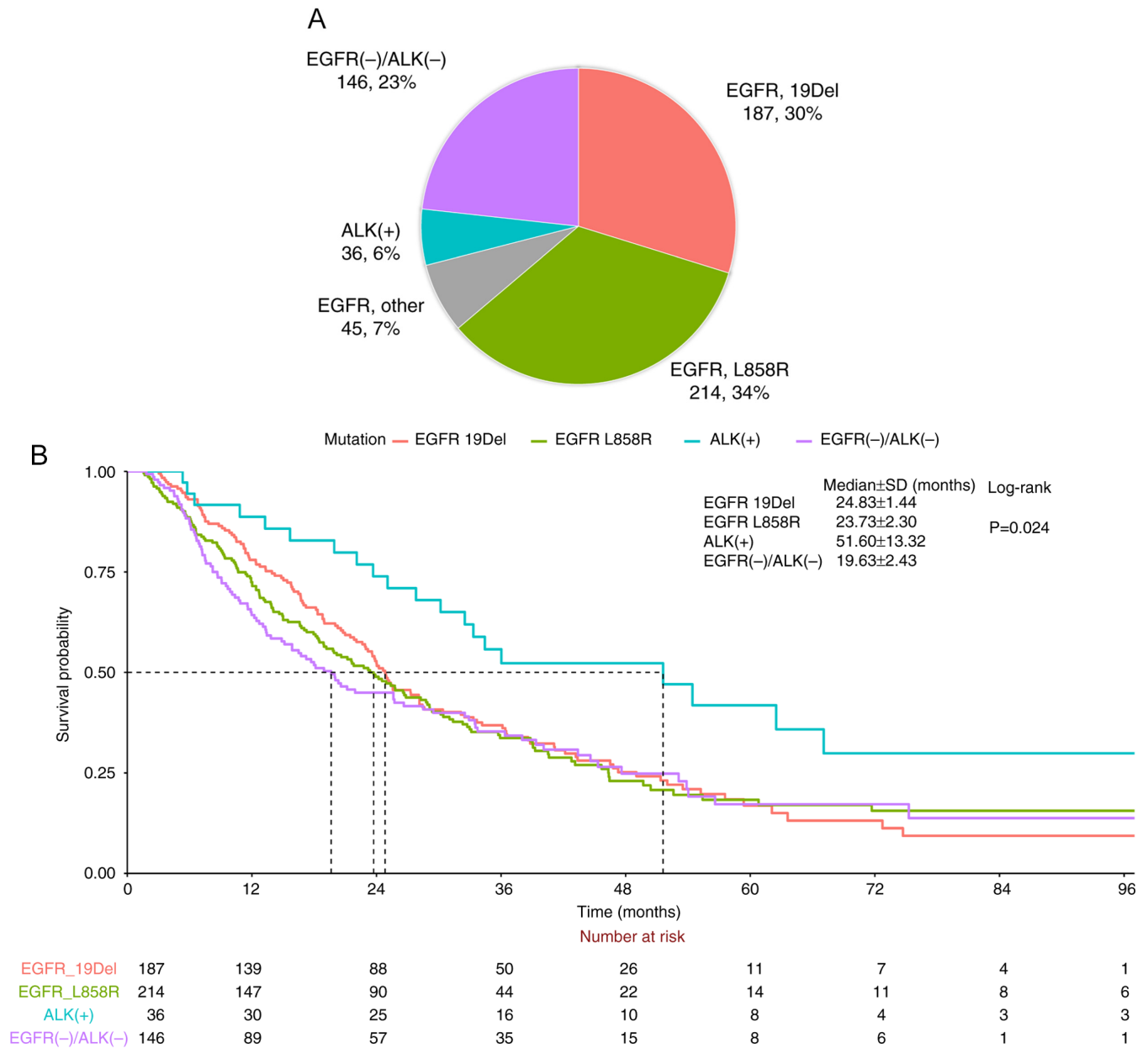


Figure S2. Distribution of activating Epidermal Growth Factor Receptor mutations in Asian countries. Modified from Graham *et al* (6). Uncommon indicates EGFR driver mutations, not exon 19 deletion or exon 21 L858R.

