

Figure S1. Recurrence outcome dichotomized by GPX4 and HSPB1 high/low expression in stage 2 patients without adjuvant chemotherapy. Kaplan-Meier analysis of RFS in CRC patients classified into high/low expression groups for (A) GPX4 and (B) HSPB1. CRC, colorectal cancer; RFS, recurrence-free survival.

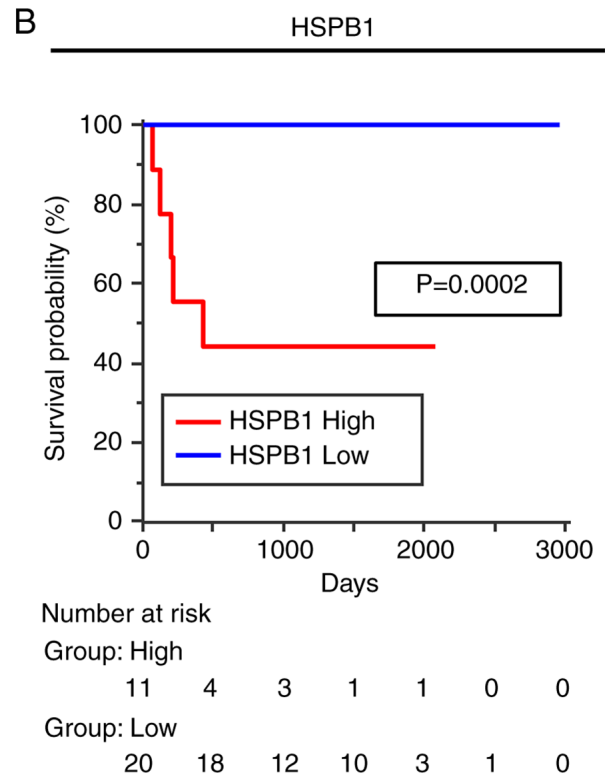
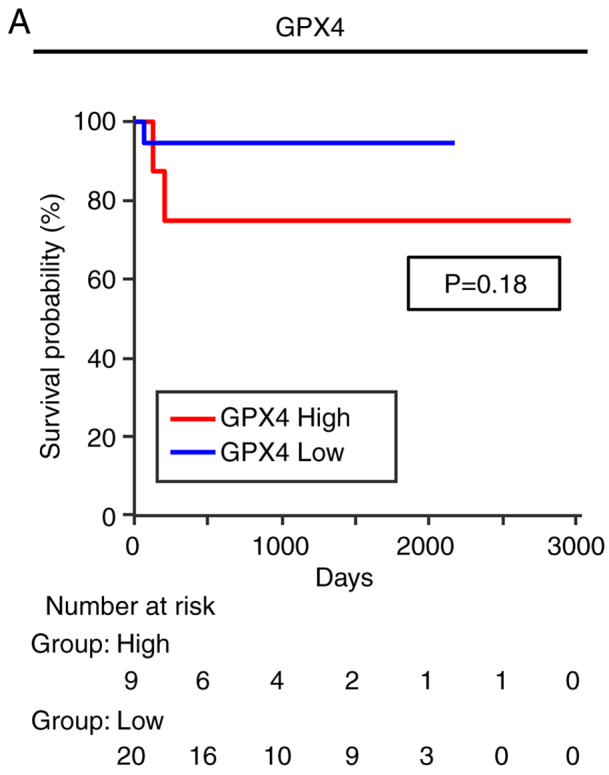
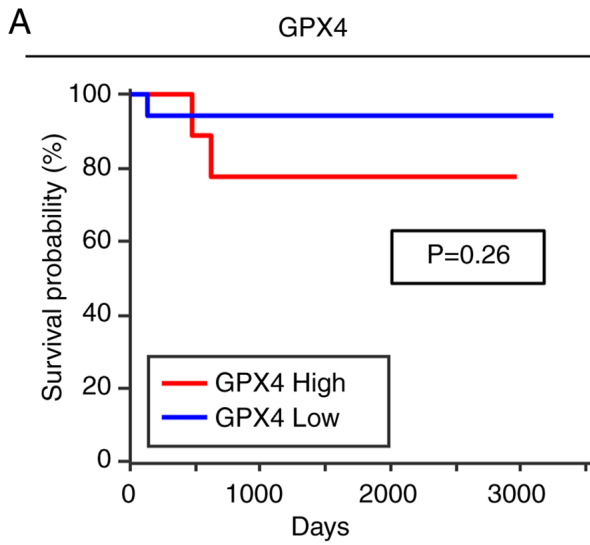
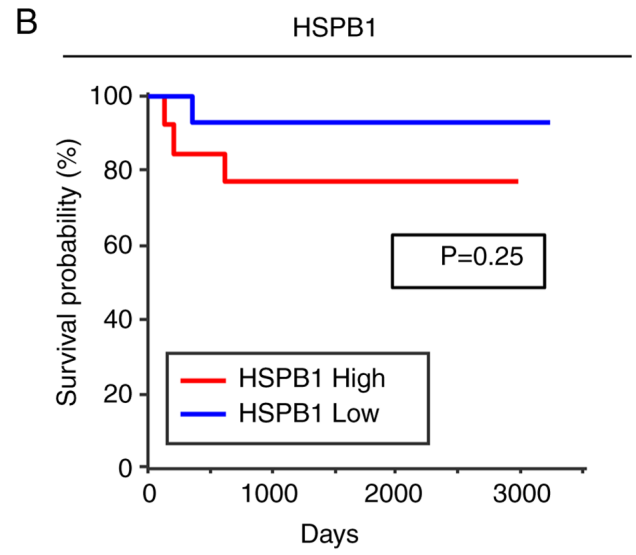


Figure S2. Recurrence outcome in CRC stage 2-3 patients treated with oral adjuvant chemotherapy classified by GPX4 and HSPB1 high/low expression. Kaplan-Meier analysis of RFS for (A) GPX4 and (B) HSPB1 high/low expression groups. CRC, colorectal cancer; RFS, recurrence-free survival.



Number at risk

| | | | | | | | | |
|-------------|----|----|----|----|---|---|---|---|
| Group: High | 9 | 8 | 7 | 5 | 2 | 1 | 0 | 0 |
| Group: Low | 17 | 15 | 13 | 13 | 7 | 6 | 1 | 0 |



Number at risk

| | | | | | | | | |
|-------------|----|----|----|----|---|---|---|---|
| Group: High | 13 | 11 | 10 | 8 | 4 | 2 | 0 | 0 |
| Group: Low | 14 | 13 | 11 | 10 | 5 | 5 | 1 | 0 |