

Figure S1. Representative immunohistochemistry images of the tumor sample. Immunohistochemistry was positive for (A) vimentin, (B) epithelial membrane antigen, (C) myogenin differentiation 1, (D) S-100, (E) SOX-10 and (F) CD34.

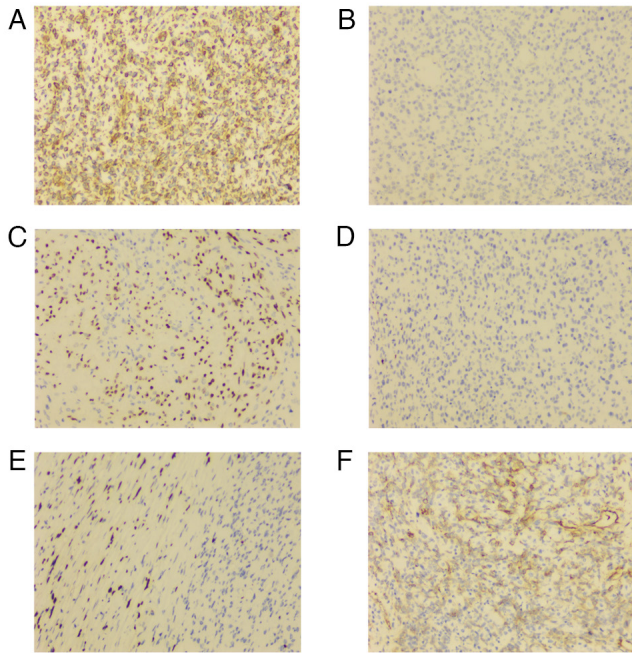


Figure S2. Representative immunohistochemistry images of the tumor sample. Immunohistochemistry was positive for (A) Bcl-2, (B) desmin, (C) smooth muscle actin and (D) integrase interactor 1. (E) Immunohistochemistry was negative for HMB-45.

