

Figure S1. Forest plot for OS. These forest plots present the pooled hazard ratio and 95% CI for OS across different treatment comparisons. (A) The results for PD-1/PD-L1 inhibitors compared with chemotherapy. (B) The results for PD-1/PD-L1 inhibitors compared with placebo. (C) The results for PD-1/PD-L1 inhibitors combined with chemotherapy compared with chemotherapy alone. OS, overall survival; CI, confidence interval; PD-1, programmed cell death-1; PD-L1, programmed death-ligand 1.

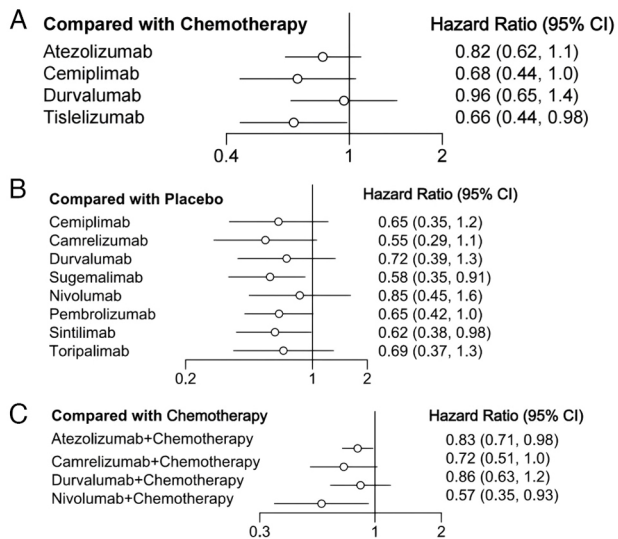


Figure S2. Forest plot for PFS. These forest plots summarize the pooled hazard ratio and 95% CI for PFS across different treatment comparisons. (A) The results for PD-1/PD-L1 inhibitors compared with chemotherapy. (B) The results for PD-1/PD-L1 inhibitors compared with placebo. (C) The results for PD-1/PD-L1 inhibitors combined with chemotherapy compared with chemotherapy alone. PFS, progression-free survival; CI, confidence interval; PD-1, programmed cell death-1; PD-L1, programmed death-ligand 1.

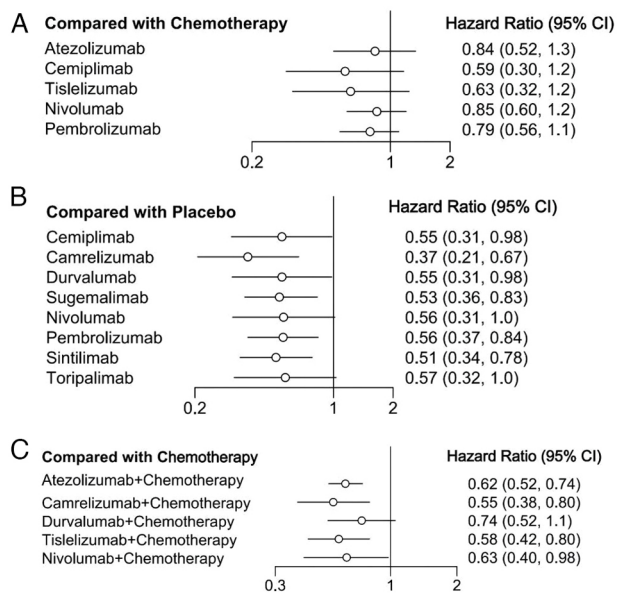


Figure S3. Forest plot for ORR. These forest plots depict the odds ratio and 95% CI for the ORR across different treatment comparisons. (A) The results for PD-1/PD-L1 inhibitors compared with chemotherapy. (B) The results for PD-1/PD-L1 inhibitors compared with placebo. (C) The results for PD-1/PD-L1 inhibitors combined with chemotherapy compared with chemotherapy alone. ORR, objective response rate; CI, confidence interval; PD-1, programmed cell death-1; PD-L1, programmed death-ligand 1.

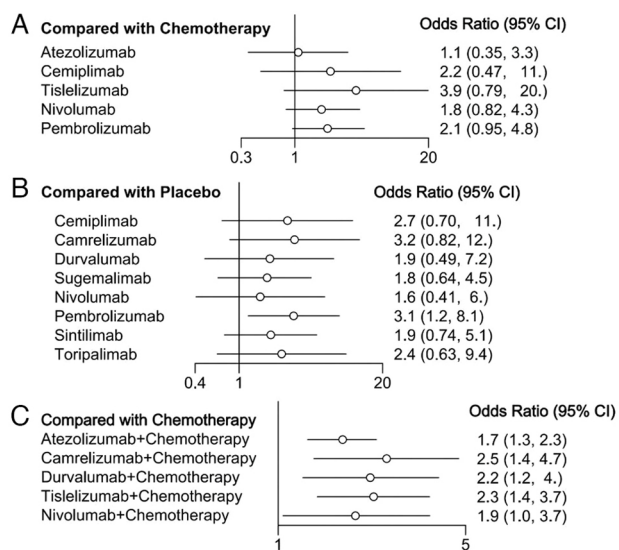


Figure S4. Forest plot for DCR. These forest plots show the odds ratio and 95% CI for the DCR across different treatment comparisons. (A) The results for PD-1/PD-L1 inhibitors compared with chemotherapy. (B) The results for PD-1/PD-L1 inhibitors compared with placebo. (C) The results for PD-1/PD-L1 inhibitors combined with chemotherapy compared with chemotherapy alone. DCR, disease control rate; CI, confidence interval; PD-1, programmed cell death-1; PD-L1, programmed death-ligand 1.

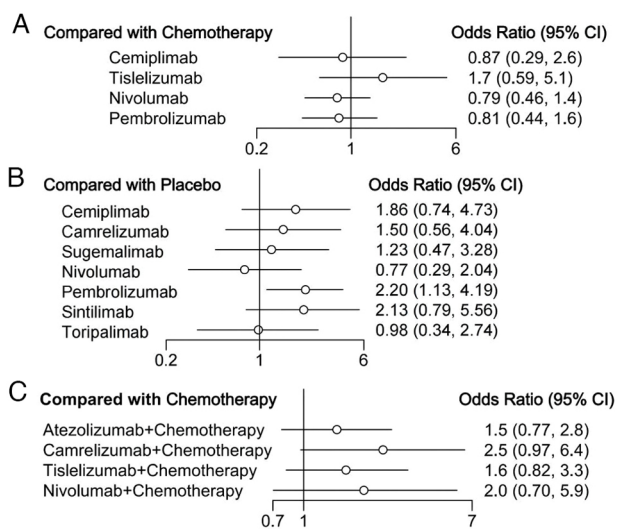


Figure S5. Forest plot for grade ≥ 3 TRAEs. These forest plots present the odds ratio and 95% CI for the occurrence of grade ≥ 3 TRAEs across different treatment comparisons. (A) The results for PD-1/PD-L1 inhibitors compared with chemotherapy. (B) The results for PD-1/PD-L1 inhibitors compared with placebo. (C) The results for PD-1/PD-L1 inhibitors combined with chemotherapy compared with chemotherapy alone. TRAEs, treatment-related adverse events; CI, confidence interval; PD-1, programmed cell death-1; PD-L1, programmed death-ligand 1.

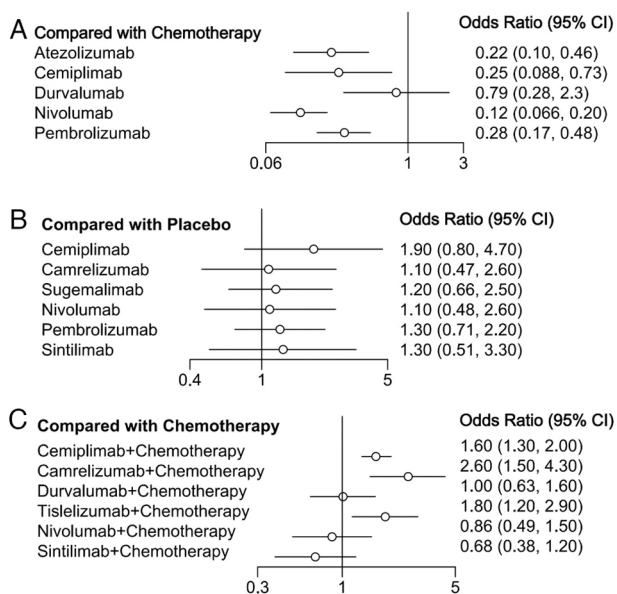


Figure S6. Forest plot for grade ≥ 3 irAEs. These forest plots present the odds ratio and 95% CI for the occurrence of grade ≥ 3 irAEs across different treatment comparisons. (A) The results for PD-1/PD-L1 inhibitors compared with chemotherapy. (B) The results for PD-1/PD-L1 inhibitors compared with placebo. (C) The results for PD-1/PD-L1 inhibitors combined with chemotherapy compared with chemotherapy alone. irAEs, immune-related adverse events; CI, confidence interval; PD-1, programmed cell death-1; PD-L1, programmed death-ligand 1.

