

Figure S1. Representative immunohistochemistry images of Ki-67 expression. (A) Low (<30%), (B) medium (30-60%) and (C) high expression ( $\geq 60\%$ ) (magnification, x200).

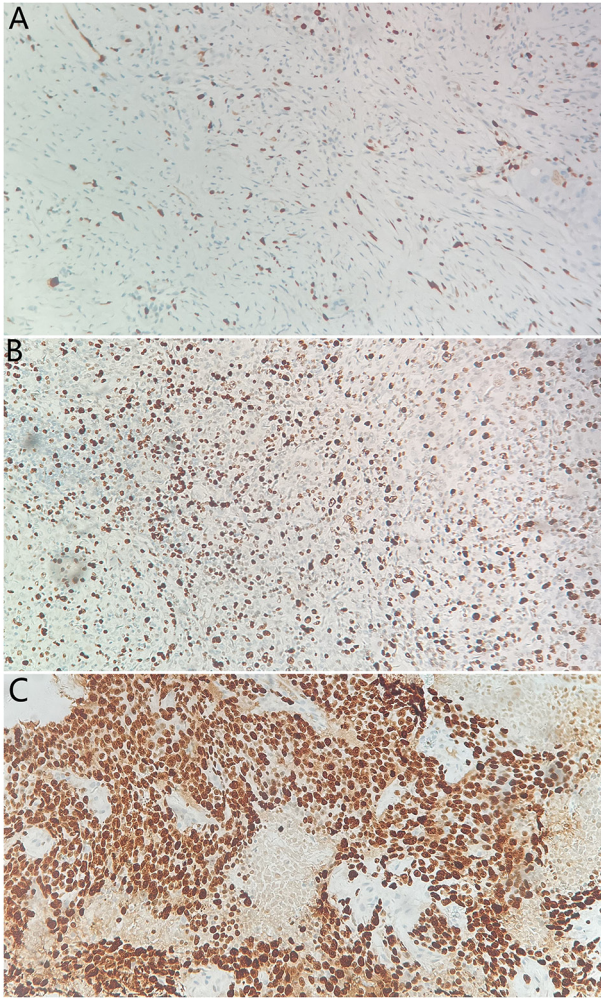


Figure S2. Representative immunohistochemistry images of programmed cell death 1 ligand 1 expression. (A) Low (<10%), (B) medium (10-50%) and (C) high expression ( $\geq 50\%$ ) (magnification, x200).

