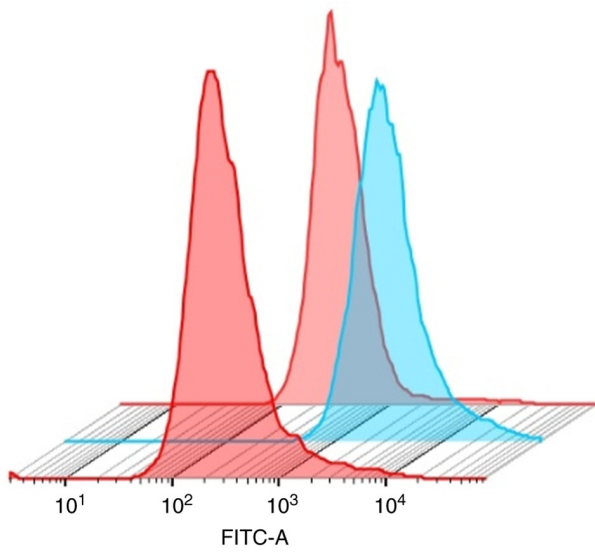


Figure S1. Effects of NAC on CSE-induced oxidative stress. Fluorescence intensity of 2'-7'-dichlorofluorescein in RLE-6TN cells. CSE, cigarette smoke extract; NAC, N-acetyl-L-cysteine.



| | Groups | Mean : FITC-A |
|---|------------|---------------|
| ■ | Control | 617 |
| ■ | 5% CSE | 4903 |
| ■ | 5% CSE+NAC | 625 |

Figure S2. Effects of NAC on CSE-induced oxidative stress. Percentages of fluorescent cells in control group (15.1%), CSE group (99.5%) and CSE + NAC group (12.7%). Representative images of three different experiments are shown. CSE, cigarette smoke extract; NAC, N-acetyl-L-cysteine.

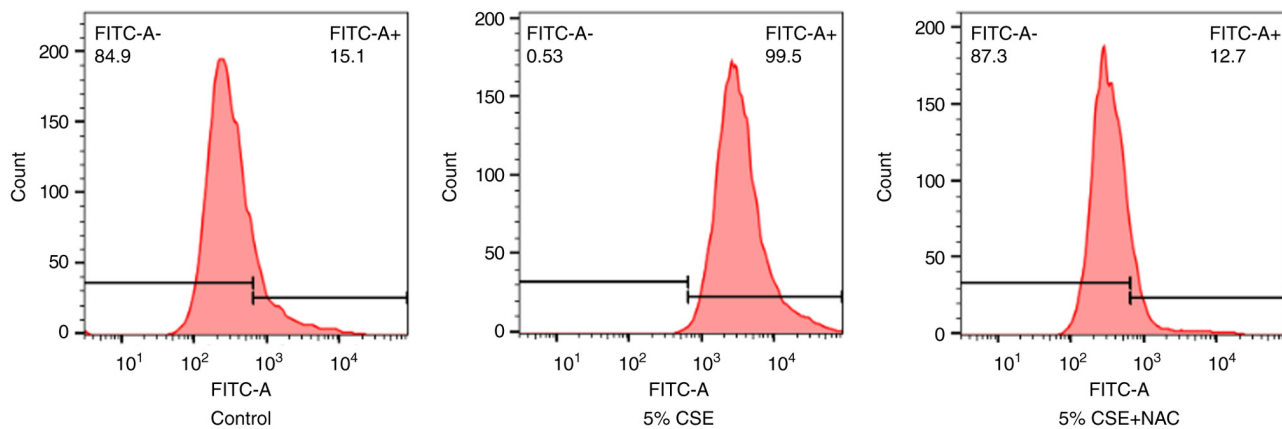


Figure S3. BAX protein expression in RLE-6TN cells in three different groups: Control group, CSE group and CSE + NAC group. This is a representative image of three different experiments. CSE, cigarette smoke extract; NAC, N-acetyl-L-cysteine.

