

Figure S1. Genotyping was performed through gel electrophoresis. Lane 1 represents heterozygote; lane 2 represents wild-type; lane 3 represents homozygous. KO, IncPrep + 96kb knockout mice primers; WT, IncPrep + 96kb wild-type primers, M, Trans2K[®] Plus DNA Marker; N, Negative Control (1X RNA Loading Buffer).

Trans2K[®] Plus DNA Marker

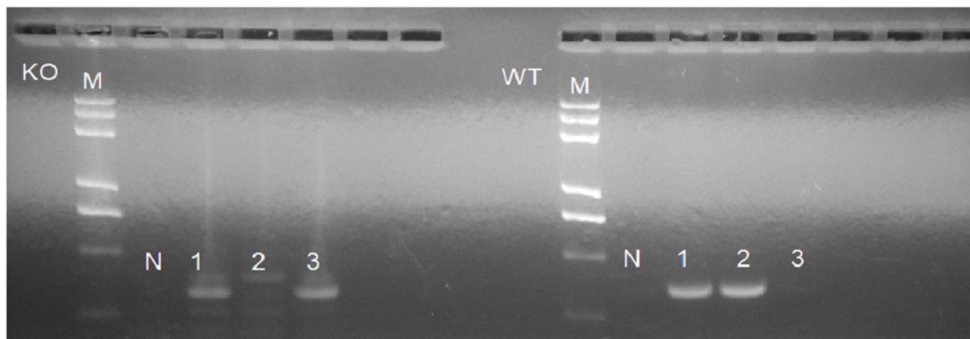
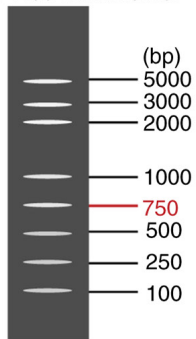


Figure S2. Weight of WT and KO mice was measured on days 21, 25, 29, 33 and 37. WT, wild-type; KO, knockout; ns, not significant.

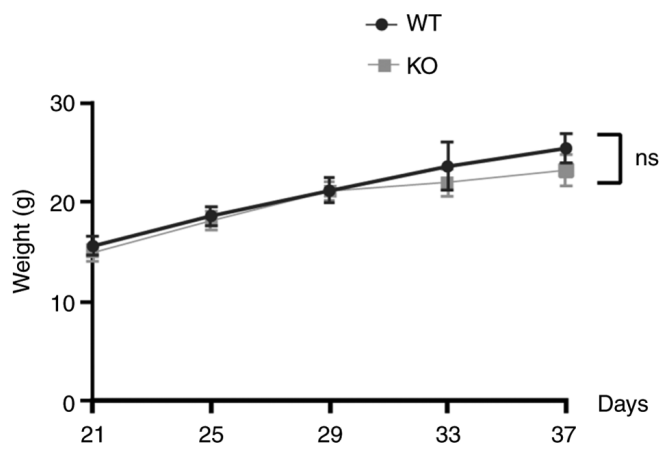


Figure S3. Effects of plasmid transfection were verified using quantitative PCR and western blotting. (A) mRNA levels of IncPrep + 96kb and (B) POP, and (C) protein levels of POP following overexpression of IncPrep + 96kb (PCDNA3.0-IncPrep + 96kb 2.2kb and PCDNA3.0-IncPrep + 96kb 2.8kb) and POP (pMigR1-POP). *P<0.05, **P<0.01. POP, prolyl oligopeptidase.

