

Figure S1. Lack of PD-L1 expression. When CPS=0 indicates PD-L1 expression negativity, no brown staining is observed in tumor cells or immune cells. PD-L1, programmed death-ligand 1.

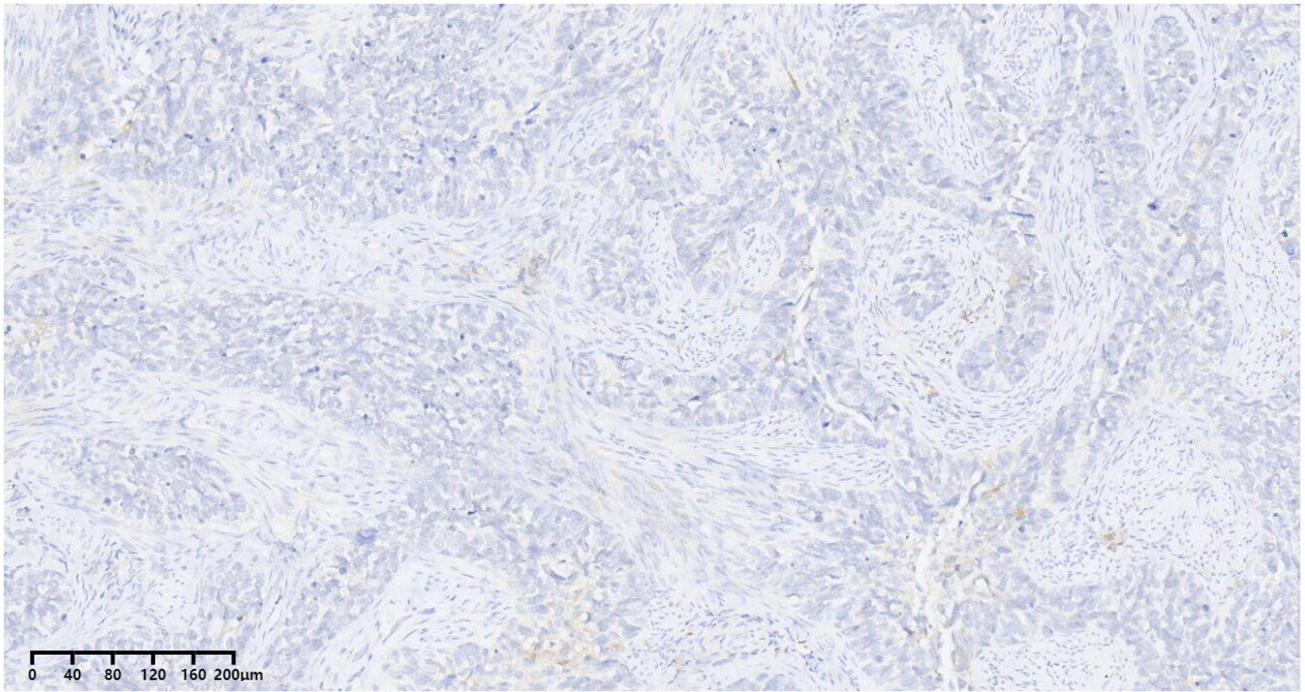


Figure S2. Positive PD-L1 expression. When CPS ≥ 1 indicates PD-L1 expression positivity, brown staining can be observed in some tumor cells or immune cells. PD-L1, programmed death-ligand 1.

