

Figure S1. Representative images of p63 and mucicarmine staining of the gastric adenosquamous carcinoma component. (A) Immunoreactivity for p63 (scale bar, 300 μm). (B) Focal mucin (arrows) positivity detected by mucicarmine staining (scale bar, 200 μm).

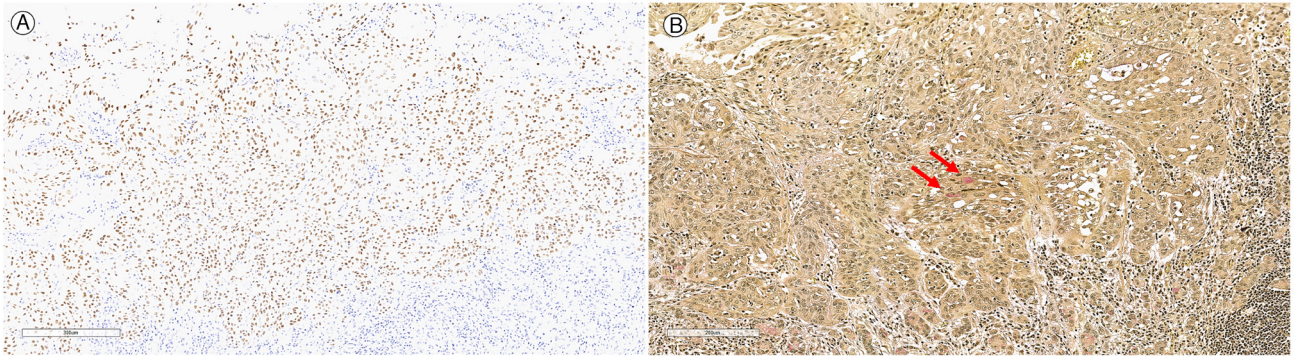


Figure S2. Immunohistochemical staining for MLH1, MSH2 and E-cadherin in the three distinct histological components. Immunoreactivity for (A) MLH1, (B) MSH2 and (C) E-cadherin was observed in the gastric adenosquamous carcinoma component (scale bar, 300 μ m). (D) MLH1, (E) MSH2 and (F) E-cadherin was observed in the gastric carcinoma with lymphoid stroma component (scale bar, 300 μ m). (G) MLH1, (H) MSH2 and (I) E-cadherin was observed in the poorly differentiated adenocarcinoma component (scale bar, 300 μ m). MLH1, mutL homolog 1; MSH2, mutS homolog 2.

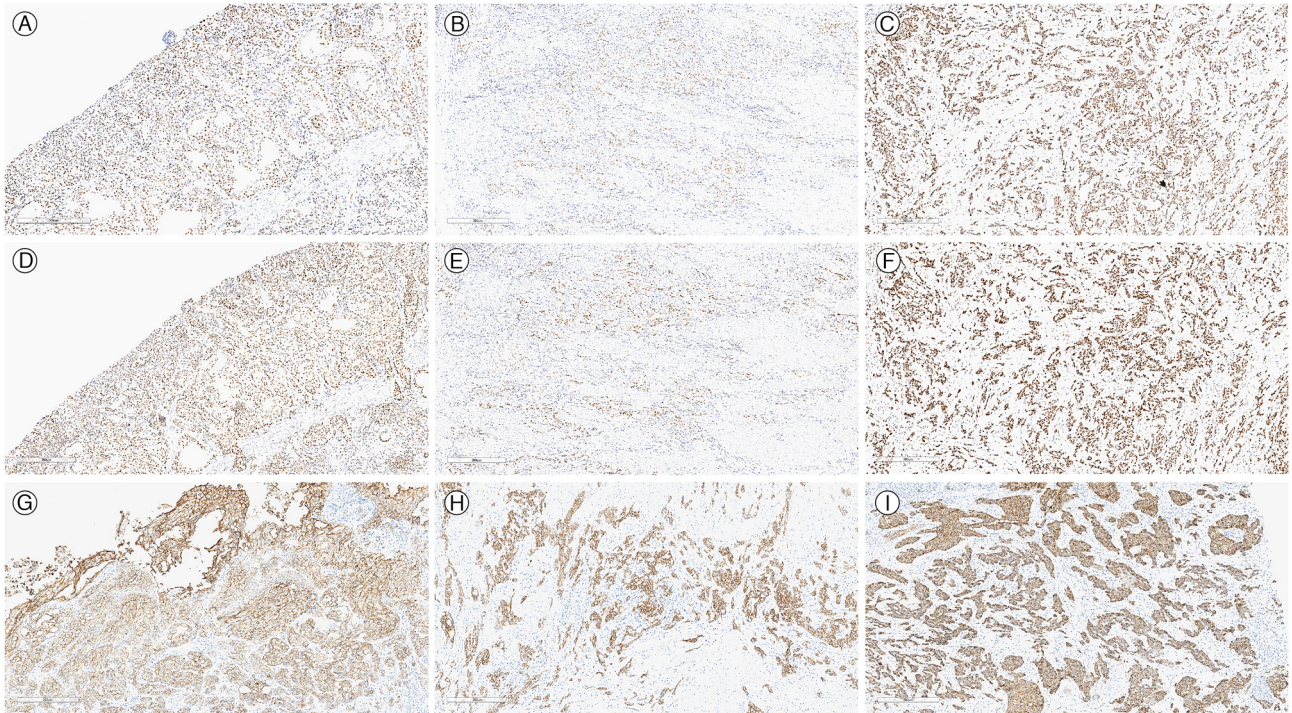


Figure S3. Immunohistochemical staining for p53 in the three distinct histological components. p53 staining demonstrated patchy positivity in the (A) gastric adenosquamous carcinoma (scale bar, 300 μm), (B) gastric carcinoma with lymphoid stroma (scale bar, 300 μm) and (C) poorly differentiated adenocarcinoma (scale bar, 300 μm) components.

