

Figure S1. Positive and negative control of CHD5 immunohistochemical staining in cerebellum tissues. (A) Purkinje cells were strongly stained in the positive control. (B) No Purkinje cells were stained in the negative control. CHD5, chromodomain helicase DNA-binding 5.

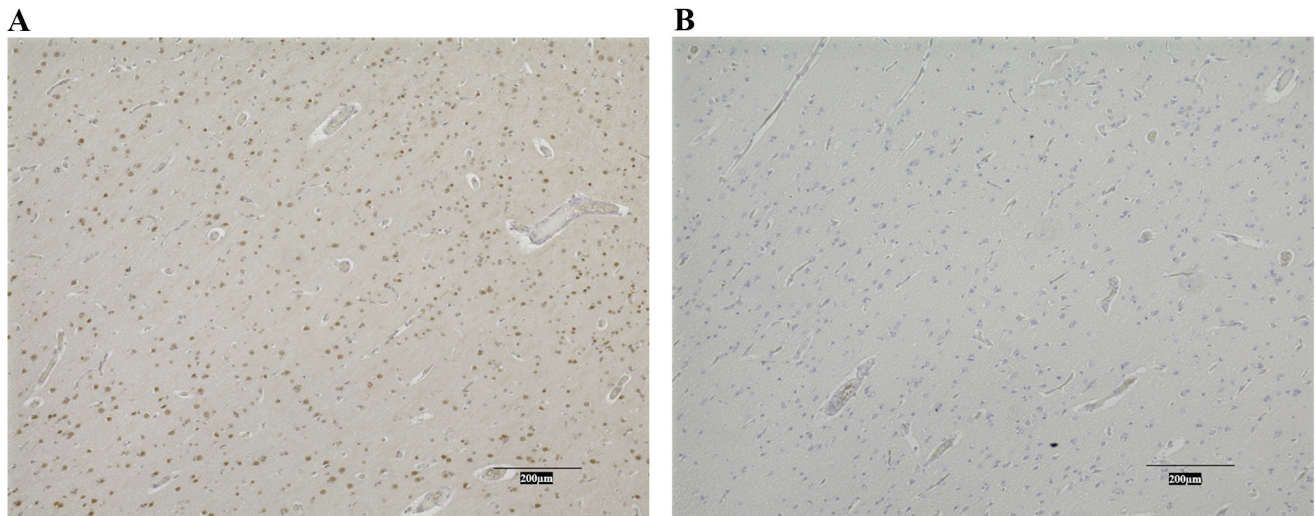


Figure S2. Representative images of CHD5 expression in (A) non-tumor gastric epithelial cells, (B) gastric paracancerous cells and (C) gastric cancer cells. CHD5, chromodomain helicase DNA-binding 5.

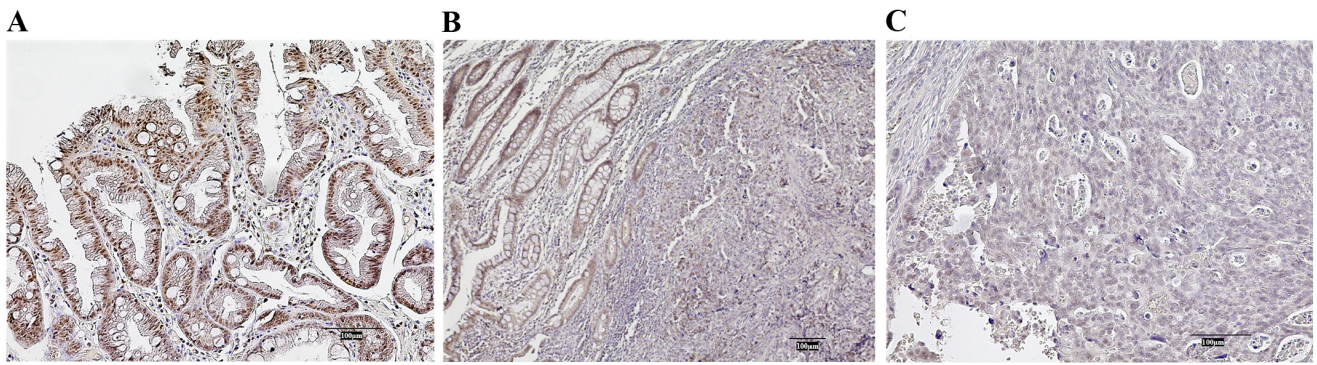


Figure S3. Western blot analysis of gastric cancer cells (AGS, NUGC-3 and MKN45), comparing CHD5- and control-transfected cells. CHD5-transfected cells demonstrated decreased levels of MDM2, EZH2 and H3K27me3 and an increased level of p53, compared with control-transfected cells. CHD5, chromodomain helicase DNA-binding 5.

