

Figure S1. Effect of GLUT inhibitors on GlcN-induced COX-2 in A549 cells. A549 cells were grown in RPMI 1640 medium containing indicated concentrations of GlcN, cytochalasin B and phloretin for 24 h. Protein level of COX-2 were determined by western blot analysis. Tubulin served as a loading control. GLUT, glucose transporter; GlcN, glucosamine.

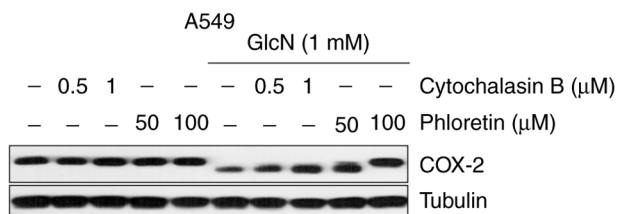


Figure S2. Effect of GlcN on HIF-1 $\alpha$  protein level. HepG2 and A549 Cells were transfected with siSCR or si*HIF1A* for 24 h and further incubated under normoxic or hypoxic conditions for 24 h followed by glucosamine treatment for additional 48 h. Protein level of HIF-1 $\alpha$  were determined by western blot analysis. Tubulin served as a loading control. GlcN, glucosamine; si, small interfering.

