

Figure S1. Incidence of grade 2 mastoid mucosa disease in the cohort of patients with nasopharyngeal carcinoma with time after radiotherapy.

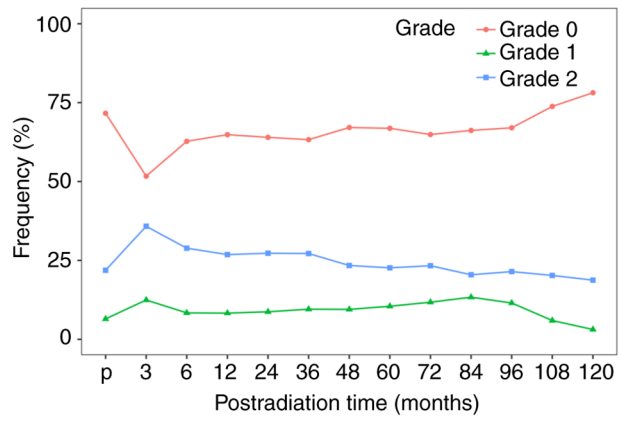


Figure S2. ROC curves of age, sex or mastoid Dmean for the prediction of persistent grade 2 mastoid mucosa disease at 1, 2, 5 and 10 years. ROC, receiver operating characteristic; AUC, area under the ROC curve.

