

Figure S1. Gating strategy for the detection of cell cycle phases in tumor PDO. (A) Doublets exclusion. (B) Live cells. (C) Propidium iodide-positive cells. (D and E) Representative flow cytometry analysis of the cell cycle distribution using Micheal H. Fox algorithm of (D) untreated and (E) Glycyrrhizin-treated PDO. PDO, patient-derived organoids.

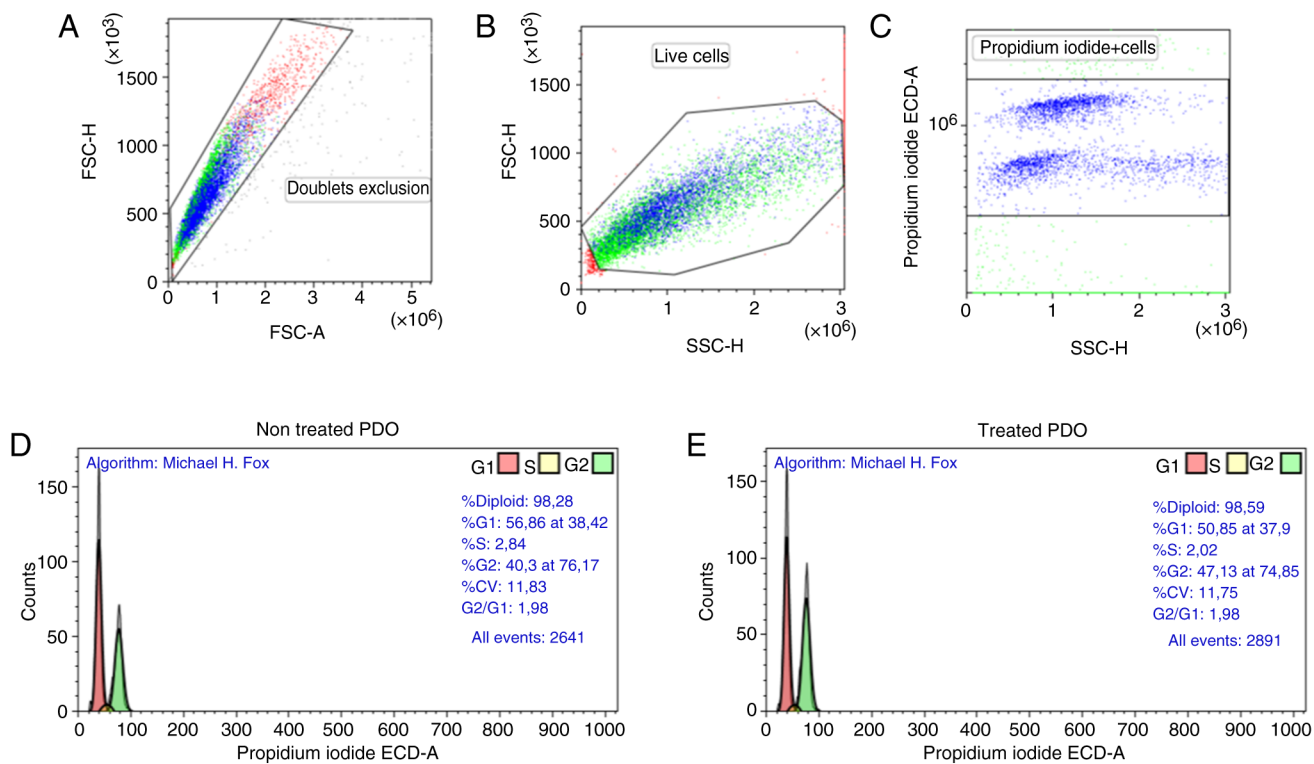


Figure S2. Gating strategy for the detection of cell cycle phases in non-tumor PDO. (A) Doublets exclusion. (B) Live cells. (C) Propidium iodide-positive cells. (D and E) Representative flow cytometry analysis of the cell cycle distribution using Micheal H. Fox algorithm of (D) untreated and (E) Glycyrrhizin-treated PDO. PDO, patient-derived organoids.

