

Figure S1. Histopathological findings of the malignant melanoma infiltration of the adrenal gland tissue (magnification, x200; sample obtained in May 2021).

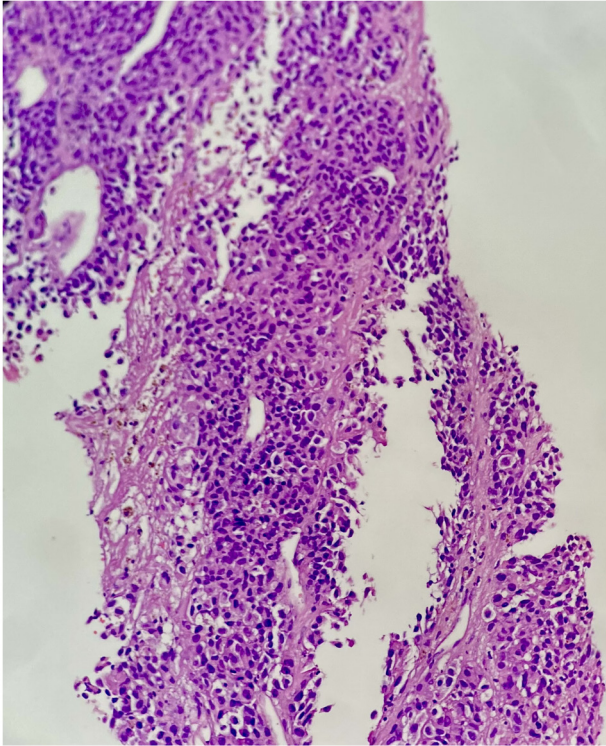


Figure S2. Immunohistochemistry findings of the malignant melanoma infiltration of the adrenal-surrenal gland tissue with human melanoma antigen-45 (magnification, x200; sample obtained in May 2021).

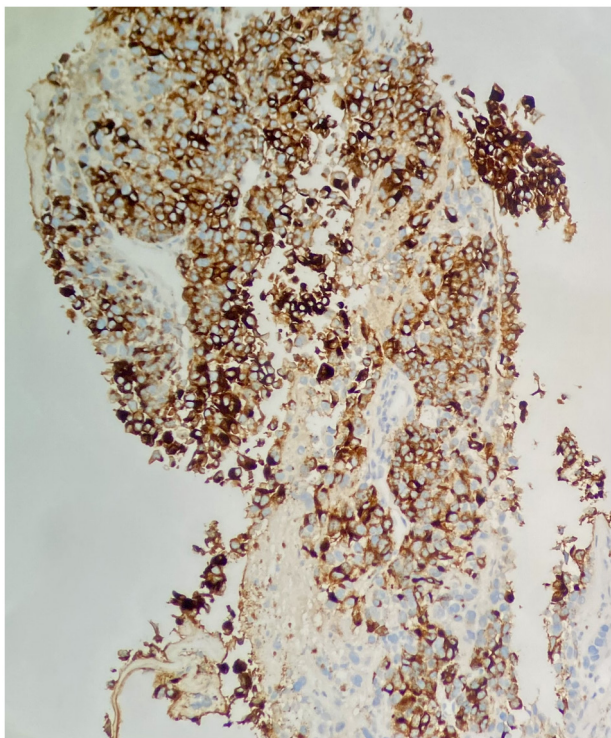


Figure S3. Histopathological findings of the malignant melanoma infiltration of the cerebellar tissue. Glial tissue with fibrillar base on the left, melanoma infiltration on the right (magnification, x200; sample obtained in March 2023).

