

Figure S1. Image of bone marrow mononuclear cells post Ficoll Paque isolation and May-Grunwald-Giemsa staining from a patient with newly diagnosed multiple myeloma.

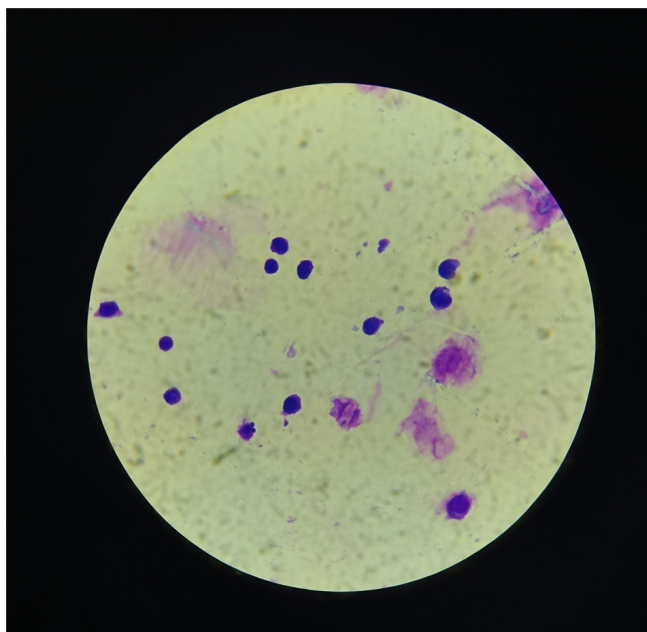


Figure S2. 2% Gel electrophoresis of BMP2 gene qPCR products. See the single bands at 102 bp, indicating the specificity of reaction. BMP, bone morphogenetic protein; qPCR, quantitative PCR.

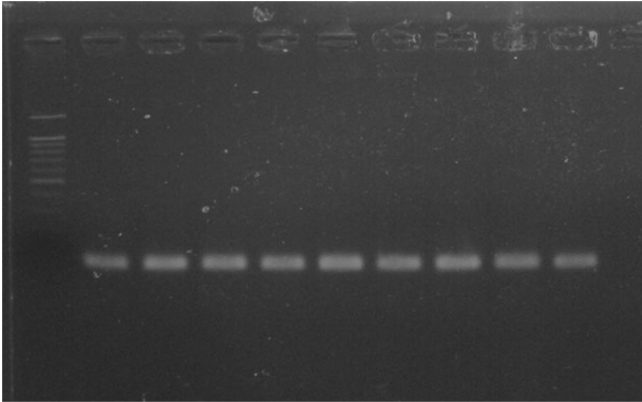


Figure S3. Pearson and Spearman correlation analyses graphs between BMP6  $\Delta Cq$  values and (A) age, (B) LDH levels, (C) b2-microglobulin levels, (D) percentage of bone marrow infiltration and (E) ISS stage. BMP, bone morphogenetic protein; ISS, International Staging System.

