

Figure S2. Downregulation of LINC00467 expression levels in the MKN45 GC cell line. (A) LINC00467 expression detected post-transfection with siRNA in MKN45 cells. GC cells exhibited reduced LINC00467 expression levels following si-LINC00467 transfection, which was additionally associated with the impaired proliferation of GC cells in (B) colony formation and (C) EdU staining assays (scale bar, 100 μm). ** $P < 0.01$. GC, gastric cancer; si-NC, small interfering RNA-negative control; EdU, 5-Ethynyl-2'-deoxyuridine.

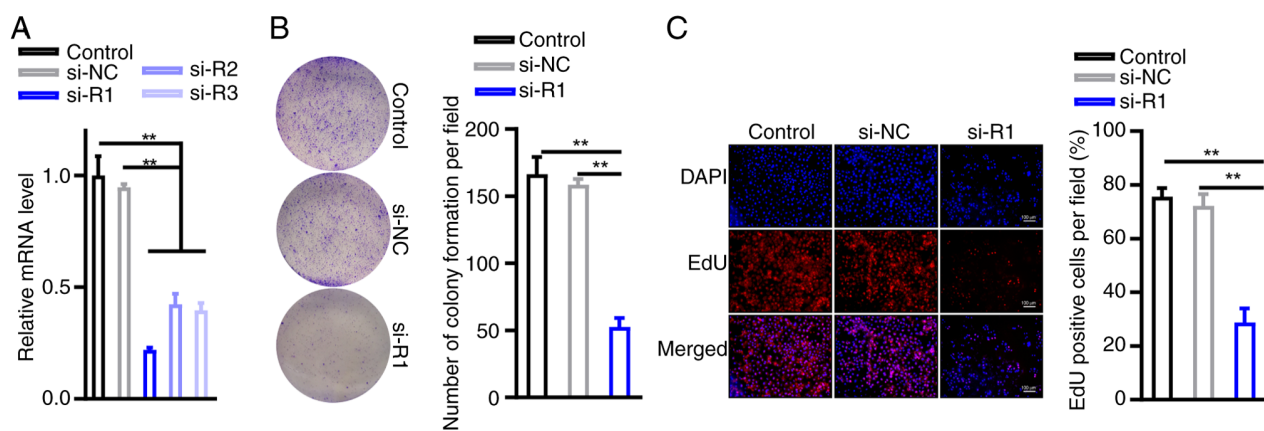
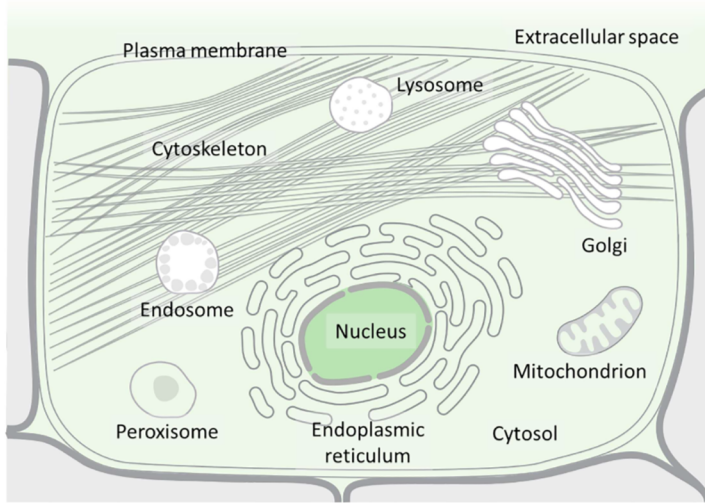
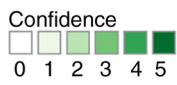


Figure S3. Predictive analyses of LINC00467 location. Cell location of LINC00467 was predicted using the online tools (A) Genecards and (B) RNALOCATE. FPKM, fragments per kilbase of exon model per million mapped reads.

A



Compartment	Confidence
Nucleus	2
Cytosol	1
Endoplasmic reticulum	1
Peroxisome	1
Mitochondrion	1
Cytoskeleton	1
Extracellular	1
Plasma membrane	1



B

